

Oil Impregnated Sintered Bronze Bushes
Imperial: Plain

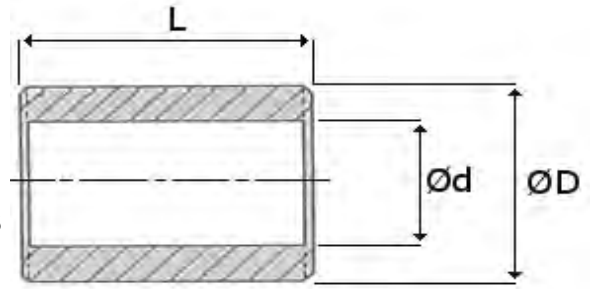
All Dimensions in Inches unless stated otherwise.

Type Ref.	Ød			ØD			Available Lengths L
	Basic	Min	Max	Basic	Min	Max	
AIC 0305	3/16	0.1883	0.1888	5/16	0.3137	0.3142	¼ ⅜ ½ ⅝ ¾
AIC 0406	1/4	0.2508	0.2513	3/8	0.3767	0.3772	¼ ⅜ ½ ⅝ ¾
AIC 0407	1/4	0.2501	0.2506	7/16	0.4385	0.4390	¼ ⅜ ½ ⅝ ¾
AIC 0408	1/4	0.2507	0.2512	1/2	0.5020	0.5025	⅜ ½ ¾
AIC 0507	5/16	0.3132	0.3137	7/16	0.4390	0.4395	5/16 ⅜ ½ 9/16 ⅝ ¾ 1
AIC 0508	5/16	0.3132	0.3137	1/2	0.5017	0.5022	¼ ⅜ ½ ⅝ ¾
AIC 0608	3/8	0.3757	0.3762	1/2	0.5020	0.5025	⅜ ½ ⅝ ¾ ⅞ 1 1 1/8 1 1/4
AIC 0610	3/8	0.3754	0.3759	5/8	0.6260	0.6270	⅜ ½ ⅝ ¾ ⅞ 1
AIC 0709	7/16	0.4382	0.4387	9/16	0.5637	0.5647	⅜ ½ ⅝ ¾
AIC 0711	7/16	0.4383	0.4388	11/16	0.6890	0.6900	⅜ ½ 1 1/4
AIC 0810	1/2	0.5008	0.5013	5/8	0.6265	0.6275	⅜ ½ ⅝ ¾ ⅞ 1 1 1/8 1 1/4
AIC 0811	1/2	0.5015	0.5020	11/16	0.6895	0.6905	½ ⅝ ¾ ⅞ 1
AIC 0812	1/2	0.5015	0.5020	3/4	0.7525	0.7535	½ ⅝ ¾ 1 1 1/4 2
AIC 0911	9/16	0.5628	0.5020	11/16	0.6890	0.6900	½ ⅝ ¾ 1 1 1/4
AIC 0912	9/16	0.5640	0.5638	3/4	0.7520	0.7530	1
AIC 1012	5/8	0.6255	0.5650	3/4	0.7515	0.7525	½ ⅝ ¾ ⅞ 1 1 1/4
AIC 1013	5/8	0.6265	0.6265	13/16	0.8145	0.8155	¾ 1 1 1/4 1 3/8
AIC 1014	5/8	0.6255	0.6275	7/8	0.8770	0.8780	½ ⅝ ¾ ⅞ 1 1 1/8 1 1/4
AIC 1115	11/16	0.6881	0.6265	15/16	0.9393	0.9403	⅞ 1 1/4
AIC 1214	3/4	0.7505	0.6891	7/8	0.8765	0.8775	½ ⅝ ¾ 1 1 1/8 1 1/4
AIC 1215	3/4	0.7535	0.7515	15/16	0.9405	0.9415	¾ 1
AIC 1216	3/4	0.7508	0.7518	1	1.0020	1.0030	⅝ ¾ ⅞ 1 1 1/8 1 1/4
AIC 1218	3/4	0.7525	0.7535	1 1/8	1.1280	1.1290	¾ 1 1 1/4
AIC 1220	3/4	0.7525	0.7535	1 1/4	1.2535	1.2545	1 1/8 1 3/8 1 1/2 2
AIC 1416	7/8	0.8755	0.8765	1	1.0017	1.0027	¾ 1 1 1/8 1 1/4 1 1/2
AIC 1418	7/8	0.8757	0.8767	1 1/8	1.1270	1.1280	¾ ⅞ 1 1 1/8 1 1/4 1 1/2
AIC 1618	1	1.0008	1.0018	1 1/8	1.1270	1.1280	¾ 1 1 1/4 1 1/2
AIC 1620	1	1.0010	1.0020	1 1/4	1.2526	1.2536	⅝ ⅞ 1 1 1/8 1 1/4 1 3/8 1 1/2 1 5/8 1 3/4 2
AIC 1624	1	1.0025	1.0035	1 1/2	1.5040	1.5050	1 3/8 1 1/2 1 3/4 2
AIC 1822	1 1/8	1.1258	1.1268	1 3/8	1.3770	1.3780	¾ 1 1 1/4 1 1/2 1 3/4 2
AIC 2024	1 1/4	1.2515	1.2525	1 1/2	1.5030	1.5040	1 1 1/4 1 3/8 1 1/2 1 3/4 1 7/8 2
AIC 2026	1 1/4	1.2525	1.2535	1 5/8	1.6287	1.6302	1 1 1/4 1 1/2 1 3/4 2 2 1/4 2 1/2
AIC 2226	1 3/8	1.3762	1.3722	1 5/8	1.6275	1.6290	¼ 1 1/2 1 3/4 2
AIC 2228	1 3/8	1.3775	1.3785	1 3/4	1.7545	1.7560	1 1/2 2 1/4
AIC 2428	1 1/2	1.5013	1.5023	1 3/4	1.7527	1.7542	1 1/4 1 1/2 1 3/4 2 2 1/4
AIC 2430	1 1/2	1.5025	1.5035	1 7/8	1.8790	1.8805	1 1/4 1 1/2 1 3/4 2 2 1/4
AIC 2432	1 1/2	1.5025	1.5035	2	2.0030	2.0045	1 1/2 2 2 1/2 3
AIC 2633	1 1/8	1.6285	1.6300	2 1/16	2.0675	2.0690	1 7/8 2 2 1/2

Please use the following table when ordering to ensure the correct length code:
 04= ¼
 05= 5/16
 06= ⅜
 08= ½
 09= 9/16
 10= ⅝
 12= ¾
 14= ⅞
 16= 1
 18= 1 1/8
 20= 1 1/4
 22= 1 3/8
 24= 1 1/2
 26= 1 5/8
 28= 1 3/4
 30= 1 7/8
 32= 2
 36= 2 1/4
 40= 2 1/2
 48= 3

Type Ref	Length	Ordering Code
AIC 2633	2 1/2	AIC 2633 40

Please note : errors and omissions excepted.



**Oil Impregnated Sintered Bronze Bushes
Imperial: Plain**

All Dimensions in Inches unless stated otherwise.

Type Ref.	Ød			ØD			Available Lengths L
	Basic	Min	Max	Basic	Min	Max	
AIC 2832	1 3/4	1.7510	1.7525	2	2.0030	2.0045	1 1/4 1 1/2 1 3/4 2 2 1/4
AIC 2836	1 3/4	1.7510	1.7525	2 1/4	2.2530	2.2550	1 1/2 1 3/4 2 2 1/4
AIC 3236	2	2.0010	2.0025	2 1/4	2.2530	2.2550	1 1/2 1 3/4 2 2 1/4 2 1/2
AIC 3240	2	2.0010	2.0025	2 1/2	2.5035	2.5055	1 1/2 1 3/4 2 2 1/4 2 1/2 3
AIC 3642	2 1/4	2.2530	2.2550	2 5/8	2.6285	2.6305	2 1/2 3
AIC 3644	2 1/4	2.2510	2.2530	2 3/4	2.7540	2.7560	1 1/2 2 2 1/4 2 1/2
AIC 4046	2 1/2	2.5030	2.5050	2 7/8	2.8795	2.8815	2 2 1/2 3
AIC 4048	2 1/2	2.5015	2.5035	3	3.0045	3.0065	1 1/2 2 2 1/2 3
AIC 4856	3	2.9980	3.0000	3 1/2	3.5020	3.5040	2 1/2 3

Please use the following table when ordering to ensure the correct length code:

- 04= 1/4
- 05= 5/16
- 06= 3/8
- 08= 1/2
- 09= 9/16
- 10= 5/8
- 12= 3/4
- 14= 7/8
- 16= 1
- 18= 1 1/8
- 20= 1 1/4
- 22= 1 3/8
- 24= 1 1/2
- 26= 1 5/8
- 28= 1 3/4
- 30= 1 7/8
- 32= 2
- 36= 2 1/4
- 40= 2 1/2
- 48= 3

Secondary Sizes

Type Ref.	Ød			ØD			Available Lengths L
	Basic	Min	Max	Basic	Min	Max	
AIC 121624FA	3/4	0.7522	0.7532	1	1.0025	1.0035	1 1/2
AIC 121628FA	3/4	0.7522	0.7532	1	1.0025	1.0035	1 3/4
AIC 121632FA	3/4	0.7522	0.7532	1	1.0025	1.0035	2
AIC 121610FB	3/4	0.7515	0.7525	1	1.0020	1.0030	5/8
AIC 121614FB	3/4	0.7515	0.7525	1	1.0020	1.0030	7/8
AIC 121620FB	3/4	0.7515	0.7525	1	1.0020	1.0030	1 1/4

Type Ref	Length	Ordering Code
AIC 4856	2 1/2	AIC 4856 40

Please note : errors and omissions excepted.