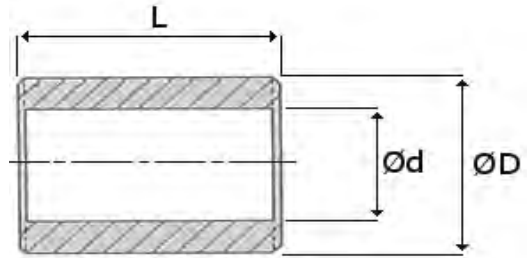




Oil Impregnated Sintered Bronze Bushes

Metric: Plain



All Dimensions in mm unless stated otherwise

Type Ref.	Ød (G7)			ØD (s7)			Available Lengths L
	Basic	Min	Max	Basic	Min	Max	
AMC 0103	1	1.002	1.012	3	3.014	3.024	02
	1.5	1.502	1.512	4	4.019	4.031	02
AMC 0205	2	2.002	2.012	5	5.019	4.031	02 03
	2.5	2.502	2.512	6	6.019	6.031	02 03
AMC 0305	3	3.002	3.012	5	5.019	5.031	03 04 06
AMC 0306	3	3.002	3.012	6	6.019	6.031	03 04
AMC 0407	4	4.004	4.016	7	7.023	7.038	03 04 06
AMC 0408	4	4.004	4.016	8	8.023	8.038	03 04 06 08 12
AMC 0508	5	5.004	5.016	8	8.023	8.038	04 05 08 10 12 16
AMC 0509	5	5.005	5.016	9	9.023	9.038	04 05 08
AMC 0609	6	6.004	6.016	9	10.023	10.038	04 06 10 12 16
AMC 0610	6	6.004	6.016	10	10.023	10.038	04 06 10 12 16
AMC 0710	7	7.005	7.020	10	10.023	10.038	05 08 10
AMC 0711	7	7.005	7.020	11	11.028	11.046	05 08 10
AMC 0811	8	8.005	8.020	11	11.028	11.046	06 08 12
AMC 0812	8	8.005	8.020	12	12.028	12.046	06 08 12 16 20
AMC 0814	8	8.005	8.020	14	14.028	14.046	08 12 16 20
AMC 0912	9	9.005	9.020	12	12.028	12.046	06 10 14
AMC 0914	9	9.005	9.020	14	14.028	14.046	10 14
AMC 1013	10	10.005	10.020	13	13.028	13.046	10 16
AMC 1014	10	10.005	10.020	14	14.028	14.046	08 10 16 20 25
AMC 1015	10	10.005	10.020	15	15.028	15.046	10 16 20 25
AMC 1016	10	10.005	10.020	16	16.028	16.046	08 10 16 20 25
AMC 1215	12	12.006	12.024	15	15.028	15.046	12 16 20 25
AMC 1216	12	12.006	12.024	16	16.028	16.046	08 12 16 20 25
AMC 1218	12	12.006	12.024	18	18.028	18.046	08 12 16 20 25
AMC 1418	14	14.006	14.024	18	18.028	18.046	10 14 20
AMC 1420	14	14.006	14.024	20	20.035	20.056	10 14 20 30
AMC 1519	15	15.006	15.024	19	19.035	19.056	10 15 20 25 30
AMC 1521	15	15.006	15.024	21	21.035	21.056	15 20 25
AMC 1620	16	16.006	16.024	20	20.035	20.056	12 16 20 25 30
AMC 1622	16	16.006	16.024	22	22.035	22.056	12 16 20 25 30
AMC 1822	18	18.006	18.024	22	22.035	22.056	12 18 30
AMC 1824	18	18.006	18.024	24	24.035	24.056	18 30
AMC 1825	18	18.006	18.024	25	25.035	25.056	22 30
AMC 2024	20	20.007	20.028	24	24.035	24.056	16 20 32
AMC 2025	20	20.007	20.028	25	25.035	25.056	15 20 25 30
AMC 2026	20	20.007	20.028	26	26.035	26.056	15 20 25 30

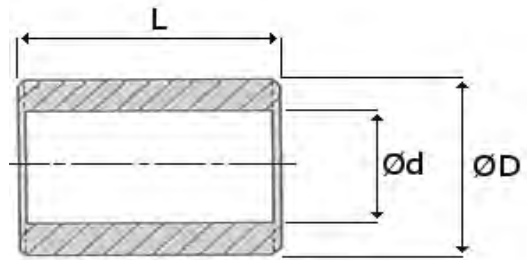
Type Ref	Length	Ordering Code
AMC 0305	<i>04</i>	AMC 0305 04

Please note : errors and omissions excepted.



Oil Impregnated Sintered Bronze Bushes

Metric: Plain



All Dimensions in mm unless stated otherwise

Type Ref.	Ød (G7)			ØD (s7)			Available Lengths L
	Basic	Min	Max	Basic	Min	Max	
AMC 2028	20	20.007	20.028	28	28.035	28.056	25 30 50
AMC 2227	22	22.007	22.028	27	27.035	27.056	15 20 25
AMC 2228	22	22.007	22.028	28	28.035	28.056	15 20 25 30
AMC 2232	22	22.007	22.028	32	32.043	32.068	20 50
AMC 2530	25	25.007	25.028	30	30.035	30.056	20 25 30 50
AMC 2532	25	25.007	25.028	32	32.043	32.068	20 25 30 35 40
AMC 2535	25	25.007	25.028	35	35.043	35.068	25 35 50
AMC 2833	28	28.007	28.028	33	33.043	33.068	20 25 30
AMC 2836	28	28.007	28.028	36	36.043	36.068	20 25 30 40
AMC 3035	30	30.007	30.028	35	35.043	35.068	20 25 30
AMC 3038	30	30.007	30.028	38	38.043	38.068	20 25 30 40
AMC 3040	30	30.007	30.028	40	40.043	40.068	25 35 50
AMC 3238	32	32.009	32.034	38	38.043	38.068	20 25 30
AMC 3240	32	32.009	32.034	40	40.043	40.068	20 25 30 40 45
AMC 3541	35	35.009	35.034	41	41.043	41.068	25 35 40
AMC 3544	35	35.009	35.034	44	44.043	44.068	22 28 35
AMC 3545	35	35.009	35.034	45	45.043	45.068	25 35 40 50
AMC 3642	36	36.009	36.034	42	42.043	42.068	22 28 36 45
AMC 3645	36	36.009	36.034	45	45.043	45.068	22 28 36 45
AMC 3844	38	38.009	38.034	44	44.043	44.068	25 35 45
AMC 3848	38	38.009	38.034	48	48.043	48.068	25 35 45 55
AMC 4046	40	40.009	40.034	46	46.043	46.068	30 40 50
AMC 4050	40	40.009	40.034	50	50.043	50.068	25 30 35 40 50 60
AMC 4248	42	42.009	42.034	48	48.043	48.068	40 50

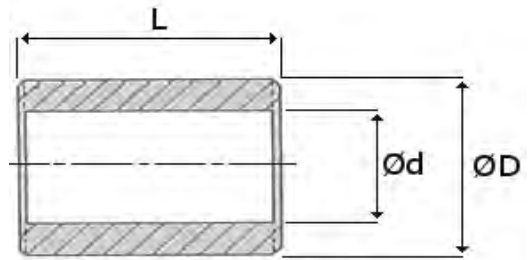
Type Ref	Length	Ordering Code
AMC 2028	25	AMC 2028 25

Please note : errors and omissions excepted.



Oil Impregnated Sintered Bronze Bushes

Metric: Plain



All Dimensions in mm unless stated otherwise

Type Ref.	Ød (G7)			ØD (s7)			Available Lengths L
	Basic	Min	Max	Basic	Min	Max	
AMC 4252	42	42.009	42.048	52	52.053	52.099	30 50 60
AMC 4551	45	45.009	45.048	51	51.053	51.099	35 45 55
AMC 4555	45	45.009	45.048	55	55.053	55.099	35 45 55 75
AMC 4556	45	45.009	48.048	56	56.053	56.099	26 28 45 56
AMC 4855	48	48.009	48.048	55	55.053	55.099	35 50
AMC 4858	48	48.009	48.048	58	58.053	58.099	50 70
AMC 5058	50	50.009	50.048	58	58.053	58.099	35 50
AMC 5060	50	50.009	50.048	60	60.053	60.099	30 35 40 50 63 70 75
AMC 5563	55	55.010	55.056	63	63.053	63.099	40 55
AMC 5565	55	55.010	55.056	65	65.053	65.099	40 55 70
AMC 6068	60	60.010	60.056	68	68.059	68.105	50 60
AMC 6070	60	60.010	60.056	70	70.059	70.105	50 60
AMC 6072	60	60.010	60.056	72	72.059	72.105	50 60 70
AMC 6370	63	63.010	63.056	70	70.059	70.105	40 50

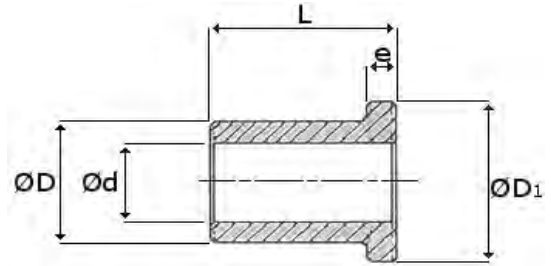
Type Ref	Length	Ordering Code
AMC 4252	30	AMC 4252 30

Please note : errors and omissions excepted.



Oil Impregnated Sintered Bronze Bushes

Metric: Flanged

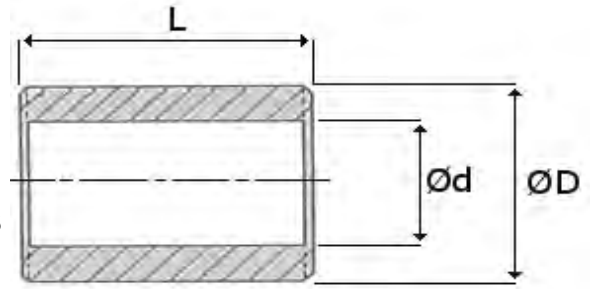


All Dimensions in mm unless stated otherwise

Type Ref.	Ød (G7)			ØD (s7)			ØD ₁	e	Available Lengths L
	Basic	Min	Max	Basic	Min	Max			
AMF 0103	1	1.002	1.012	3	3.014	3.024	5	1	02
	1.5	1.502	1.512	4	4.019	4.031	6	1	02
AMF 0205	2	2.002	2.012	5	5.019	5.031	8	1.5	03
	2.5	2.502	2.512	6	6.019	6.031	9	1.5	03
AMF 0306	3	3.002	3.012	6	6.019	6.031	9	1.5	04
AMF 0408	4	4.004	4.016	8	8.023	8.038	12	2	03 04 06 08 12
AMF 0509	5	5.004	5.016	9	9.023	9.038	13	2	04 05 08
AMF 0610	6	6.004	6.016	10	10.023	10.038	14	2	04 06 10
AMF 0711	7	7.005	7.020	11	11.028	11.046	15	2	05 08
AMF 0812	8	8.005	8.020	12	12.028	12.046	16	2	06 08 12 16
AMF 0914	9	9.005	9.020	14	14.028	14.046	19	2.5	06 10 14
AMF 1013	10	10.005	10.020	13	13.028	13.046	17	2.5	10 16 20
AMF 1015	10	10.005	10.020	15	15.028	15.046	21	3	10 16 20
AMF 1016	10	10.005	10.020	16	16.028	16.046	22	3	08 10 16
AMF 1215	12	12.006	12.024	15	15.028	15.046	21	3	08 10 16
AMF 1217	12	12.006	12.024	17	17.028	17.046	23	3	12 16 20 25
AMF 1218	12	12.006	12.024	18	18.028	18.046	24	3	08 12 20
AMF 1420	14	14.006	14.024	20	20.035	20.056	26	3	10 14 20
AMF 1519	15	15.006	15.024	19	19.035	19.056	25	3	16 20 25
AMF 1521	15	15.006	15.024	21	21.035	21.056	27	3	10 15 20 25
AMF 1620	16	16.006	16.024	20	20.035	20.056	27	3	16 20 25
AMF 1622	16	16.006	16.024	22	22.035	22.056	28	3	12 16 20 25
AMF 1824	18	18.006	18.024	24	24.035	24.056	30	3	12 18 22 30
AMF 2024	20	20.007	20.028	24	24.035	24.056	30	3	16 20 25
AMF 2026	20	20.007	20.028	26	26.035	26.056	32	3	15 20 25 30
AMF 2228	22	22.007	22.028	28	28.035	28.056	34	3	15 20 25 30
AMF 2530	25	25.007	25.028	30	30.035	30.056	39	3.5	20 25 32
AMF 2532	25	25.007	25.028	32	32.043	32.068	39	3.5	20 25 30
AMF 2836	28	28.007	28.028	36	36.043	36.068	44	4	20 25 30
AMF 3038	30	30.007	30.028	38	38.043	38.068	46	4	20 25 30
AMF 3238	32	32.009	32.034	38	38.043	38.068	46	4	20 25 32
AMF 3240	32	32.009	32.034	40	40.043	40.068	48	4	20 25 30
AMF 3545	35	35.009	35.034	45	45.043	45.068	55	5	25 35 45
AMF 3848	38	38.009	38.034	48	48.043	48.068	58	5	25 35 45
AMF 4046	40	40.009	40.034	46	46.043	46.068	56	5	25 32 40
AMF 4050	40	40.009	40.034	50	50.043	50.068	60	5	25 30 40 50

Type Ref.	Ød (G8)			ØD (s8)			ØD ₁	e	Available Lengths L
	Basic	Min	Max	Basic	Min	Max			
AMF 4252	42	42.009	42.048	52	52.053	52.099	62	5	30 40 50
AMF 4555	45	45.009	45.048	55	55.053	55.099	65	5	35 45 55
AMF 5060	50	50.009	50.048	60	60.053	60.099	70	5	32 40 50

Please note : errors and omissions excepted.



Oil Impregnated Sintered Bronze Bushes
Imperial: Plain

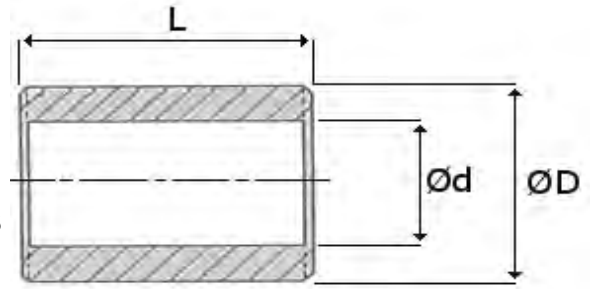
All Dimensions in Inches unless stated otherwise.

Type Ref.	Ød			ØD			Available Lengths L
	Basic	Min	Max	Basic	Min	Max	
AIC 0305	3/16	0.1883	0.1888	5/16	0.3137	0.3142	¼ ⅜ ½ ⅝ ¾
AIC 0406	1/4	0.2508	0.2513	3/8	0.3767	0.3772	¼ ⅜ ½ ⅝ ¾
AIC 0407	1/4	0.2501	0.2506	7/16	0.4385	0.4390	¼ ⅜ ½ ⅝ ¾
AIC 0408	1/4	0.2507	0.2512	1/2	0.5020	0.5025	⅜ ½ ¾
AIC 0507	5/16	0.3132	0.3137	7/16	0.4390	0.4395	5/16 ⅜ ½ 9/16 ⅝ ¾ 1
AIC 0508	5/16	0.3132	0.3137	1/2	0.5017	0.5022	¼ ⅜ ½ ⅝ ¾
AIC 0608	3/8	0.3757	0.3762	1/2	0.5020	0.5025	⅜ ½ ⅝ ¾ ⅞ 1 1 1/8 1 1/4
AIC 0610	3/8	0.3754	0.3759	5/8	0.6260	0.6270	⅜ ½ ⅝ ¾ ⅞ 1
AIC 0709	7/16	0.4382	0.4387	9/16	0.5637	0.5647	⅜ ½ ⅝ ¾
AIC 0711	7/16	0.4383	0.4388	11/16	0.6890	0.6900	⅜ ½ 1 1/4
AIC 0810	1/2	0.5008	0.5013	5/8	0.6265	0.6275	⅜ ½ ⅝ ¾ ⅞ 1 1 1/8 1 1/4
AIC 0811	1/2	0.5015	0.5020	11/16	0.6895	0.6905	½ ⅝ ¾ ⅞ 1
AIC 0812	1/2	0.5015	0.5020	3/4	0.7525	0.7535	½ ⅝ ¾ 1 1 1/4 2
AIC 0911	9/16	0.5628	0.5020	11/16	0.6890	0.6900	½ ⅝ ¾ 1 1 1/4
AIC 0912	9/16	0.5640	0.5638	3/4	0.7520	0.7530	1
AIC 1012	5/8	0.6255	0.5650	3/4	0.7515	0.7525	½ ⅝ ¾ ⅞ 1 1 1/4
AIC 1013	5/8	0.6265	0.6265	13/16	0.8145	0.8155	¾ 1 1 1/4 1 3/8
AIC 1014	5/8	0.6255	0.6275	7/8	0.8770	0.8780	½ ⅝ ¾ ⅞ 1 1 1/8 1 1/4
AIC 1115	11/16	0.6881	0.6265	15/16	0.9393	0.9403	⅞ 1 1/4
AIC 1214	3/4	0.7505	0.6891	7/8	0.8765	0.8775	½ ⅝ ¾ 1 1 1/8 1 1/4
AIC 1215	3/4	0.7535	0.7515	15/16	0.9405	0.9415	¾ 1
AIC 1216	3/4	0.7508	0.7518	1	1.0020	1.0030	⅝ ¾ ⅞ 1 1 1/8 1 1/4
AIC 1218	3/4	0.7525	0.7535	1 1/8	1.1280	1.1290	¾ 1 1 1/4
AIC 1220	3/4	0.7525	0.7535	1 1/4	1.2535	1.2545	1 1/8 1 3/8 1 1/2 2
AIC 1416	7/8	0.8755	0.8765	1	1.0017	1.0027	¾ 1 1 1/8 1 1/4 1 1/2
AIC 1418	7/8	0.8757	0.8767	1 1/8	1.1270	1.1280	¾ ⅞ 1 1 1/8 1 1/4 1 1/2
AIC 1618	1	1.0008	1.0018	1 1/8	1.1270	1.1280	¾ 1 1 1/4 1 1/2
AIC 1620	1	1.0010	1.0020	1 1/4	1.2526	1.2536	⅝ ⅞ 1 1 1/8 1 1/4 1 3/8 1 1/2 1 5/8 1 3/4 2
AIC 1624	1	1.0025	1.0035	1 1/2	1.5040	1.5050	1 3/8 1 1/2 1 3/4 2
AIC 1822	1 1/8	1.1258	1.1268	1 3/8	1.3770	1.3780	¾ 1 1 1/4 1 1/2 1 3/4 2
AIC 2024	1 1/4	1.2515	1.2525	1 1/2	1.5030	1.5040	1 1 1/4 1 3/8 1 1/2 1 3/4 1 7/8 2
AIC 2026	1 1/4	1.2525	1.2535	1 5/8	1.6287	1.6302	1 1 1/4 1 1/2 1 3/4 2 2 1/4 2 1/2
AIC 2226	1 3/8	1.3762	1.3722	1 5/8	1.6275	1.6290	¼ 1 1/2 1 3/4 2
AIC 2228	1 3/8	1.3775	1.3785	1 3/4	1.7545	1.7560	1 1/2 2 1/4
AIC 2428	1 1/2	1.5013	1.5023	1 3/4	1.7527	1.7542	1 1/4 1 1/2 1 3/4 2 2 1/4
AIC 2430	1 1/2	1.5025	1.5035	1 7/8	1.8790	1.8805	1 1/4 1 1/2 1 3/4 2 2 1/4
AIC 2432	1 1/2	1.5025	1.5035	2	2.0030	2.0045	1 1/2 2 2 1/2 3
AIC 2633	1 1/8	1.6285	1.6300	2 1/16	2.0675	2.0690	1 7/8 2 2 1/2

Please use the following table when ordering to ensure the correct length code:
 04= ¼
 05= 5/16
 06= ⅜
 08= ½
 09= 9/16
 10= ⅝
 12= ¾
 14= ⅞
 16= 1
 18= 1 1/8
 20= 1 1/4
 22= 1 3/8
 24= 1 1/2
 26= 1 5/8
 28= 1 3/4
 30= 1 7/8
 32= 2
 36= 2 1/4
 40= 2 1/2
 48= 3

Type Ref	Length	Ordering Code
AIC 2633	2 1/2	AIC 2633 40

Please note : errors and omissions excepted.



Oil Impregnated Sintered Bronze Bushes Imperial: Plain

All Dimensions in Inches unless stated otherwise.

Type Ref.	Ød			ØD			Available Lengths L
	Basic	Min	Max	Basic	Min	Max	
AIC 2832	1 3/4	1.7510	1.7525	2	2.0030	2.0045	1 1/4 1 1/2 1 3/4 2 2 1/4
AIC 2836	1 3/4	1.7510	1.7525	2 1/4	2.2530	2.2550	1 1/2 1 3/4 2 2 1/4
AIC 3236	2	2.0010	2.0025	2 1/4	2.2530	2.2550	1 1/2 1 3/4 2 2 1/4 2 1/2
AIC 3240	2	2.0010	2.0025	2 1/2	2.5035	2.5055	1 1/2 1 3/4 2 2 1/4 2 1/2 3
AIC 3642	2 1/4	2.2530	2.2550	2 5/8	2.6285	2.6305	2 1/2 3
AIC 3644	2 1/4	2.2510	2.2530	2 3/4	2.7540	2.7560	1 1/2 2 2 1/4 2 1/2
AIC 4046	2 1/2	2.5030	2.5050	2 7/8	2.8795	2.8815	2 2 1/2 3
AIC 4048	2 1/2	2.5015	2.5035	3	3.0045	3.0065	1 1/2 2 2 1/2 3
AIC 4856	3	2.9980	3.0000	3 1/2	3.5020	3.5040	2 1/2 3

Please use the following table when ordering to ensure the correct length code:

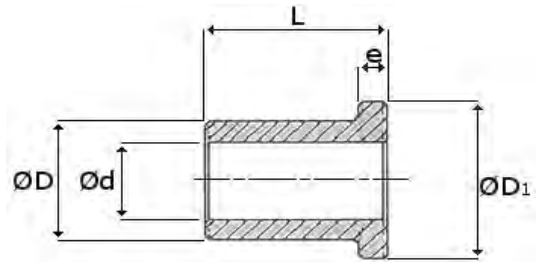
- 04= 1/4
- 05= 5/16
- 06= 3/8
- 08= 1/2
- 09= 9/16
- 10= 5/8
- 12= 3/4
- 14= 7/8
- 16= 1
- 18= 1 1/8
- 20= 1 1/4
- 22= 1 5/8
- 24= 1 1/2
- 26= 1 5/8
- 28= 1 3/4
- 30= 1 7/8
- 32= 2
- 36= 2 1/4
- 40= 2 1/2
- 48= 3

Secondary Sizes

Type Ref.	Ød			ØD			Available Lengths L
	Basic	Min	Max	Basic	Min	Max	
AIC 121624FA	3/4	0.7522	0.7532	1	1.0025	1.0035	1 1/2
AIC 121628FA	3/4	0.7522	0.7532	1	1.0025	1.0035	1 3/4
AIC 121632FA	3/4	0.7522	0.7532	1	1.0025	1.0035	2
AIC 121610FB	3/4	0.7515	0.7525	1	1.0020	1.0030	5/8
AIC 121614FB	3/4	0.7515	0.7525	1	1.0020	1.0030	7/8
AIC 121620FB	3/4	0.7515	0.7525	1	1.0020	1.0030	1 1/4

Type Ref	Length	Ordering Code
AIC 4856	2 1/2	AIC 4856 40

Please note : errors and omissions excepted.



Oil Impregnated Sintered Bronze Bushes Imperial: Flanged

All Dimensions in Inches unless stated otherwise.

Type Ref.	Ød			ØD			ØD ₁	e	Available Lengths L
	Basic	Min	Max	Basic	Min	Max			
AIF 0305	3/16	0.1880	0.1885	5/16	0.3137	0.3142	0.3750	0.062	¼ ⅜ ½
AIF 0406	1/4	0.2505	0.2510	3/8	0.3767	0.3722	0.5000	0.062	¼ ⅜ ½ ¾
AIF 0508	5/16	0.3130	0.3135	1/2	0.5020	0.5025	0.6250	0.062	¼ ⅜ ½ ¾
AIF 0509	5/16	0.3120	0.3125	9/16	0.5640	0.5650	0.6562	0.125	⅜ ⅝ ¾
AIF 0608	3/8	0.3755	0.3760	1/2	0.5015	0.5020	0.6250	0.062	½ ⅞
AIF 0609	3/8	0.3747	0.3752	9/16	0.5640	0.5650	0.7500	0.062	½
AIF 0610	3/8	0.3757	0.3762	5/8	0.6265	0.6275	0.7500	0.125	⅜ ½ ⅝ ¾
AIF 0709	7/16	0.4401	0.4406	9/16	0.5641	0.5651	0.7500	0.062	½ ¾ 1
AIF 0810	1/2	0.5000	0.5005	5/8	0.6265	0.6275	0.7500	0.098	½ 1
AIF 0812	1/2	0.5008	0.5013	3/4	0.7417	0.7527	1.0000	0.125	½ ¾ 1 1⅛
AIF 1012	5/8	0.6275	0.6285	3/4	0.7525	0.7535	1.1250	0.094	½ 1 1⅛
AIF 1014	5/8	0.6255	0.6265	7/8	0.8770	0.8780	1.2500	0.125	½ ¾ 1 1⅛
AIF 1216	3/4	0.7508	0.7518	1	1.0020	1.0030	1.3750	0.125	¾ 1 1¼ 1½
AIF 1416	7/8	0.8755	0.8765	1	1.0017	1.0027	1.2500	0.125	1
AIF 1418	7/8	0.8757	0.8767	1 1/8	1.1270	1.1280	1.6250	0.125	¾ 1 1¼ 1½
AIF 1620	1	1.0010	1.0020	1 1/4	1.2526	1.2536	1.7500	0.125	1 1¼ 1½ 1¾ 2
AIF 1822	1 1/8	1.1260	1.1270	1 3/8	1.3776	1.3786	1.8750	0.125	1 1¼ 1½ 1¾
AIF 2024	1 1/4	1.2510	1.2520	1 1/2	1.5030	1.5040	1.8750	0.125	¾ 1¼ 1½
AIF 2026	1 1/4	1.2516	1.2526	1 5/8	1.6280	1.6295	2.0000	0.125	1 1¼ 1½ 1¾
AIF 2226	1 3/8	1.3745	1.3755	1 5/8	1.6270	1.6285	1.8770	0.125	¾ 1¼
AIF 2428	1 1/2	1.5016	1.5026	1 3/4	1.7510	1.7525	1.8770	0.120	1½ 1⅞
AIF 2430	1 1/2	1.5016	1.5026	1 7/8	1.8780	1.8795	2.5000	0.188	¼ 1½ 1¾ 2

Please use the following table when ordering to ensure the correct length code:
 04= ¼
 05= 5/16
 06= ⅜
 08= ½
 09= 9/16
 10= ⅝
 12= ¾
 14= ⅞
 16= 1
 18= 1⅛
 20= 1¼
 22= 1⅜
 24= 1½
 26= 1⅝
 28= 1¾
 30= 1⅞
 32= 2
 36= 2¼
 40= 2½
 48= 3

Secondary Sizes

Type Ref.	Ød			ØD			ØD ₁	e	Available Lengths L
	Basic	Min	Max	Basic	Min	Max			
AIF 060808FA	3/8	0.3755	0.3760	1/2	0.5020	0.5025	0.6250	0.140	½
AIF 060812FA	3/8	0.3755	0.3760	1/2	0.5020	0.5025	0.6250	0.140	¾
AIF 060814FA	3/8	0.3755	0.3760	1/2	0.5020	0.5025	0.6250	0.140	⅞
AIF 162012FA	1	1.0010	1.0020	1 1/4	1.2520	1.2530	1.5000	0.125	¾
AIF 162016FA	1	1.0010	1.0020	1 1/4	1.2520	1.2530	1.5000	0.125	1
AIF 162018FA	1	1.0010	1.0020	1 1/4	1.2520	1.2530	1.5000	0.125	1⅛
AIF 162024FA	1	1.0010	1.0020	1 1/4	1.2520	1.2530	1.5000	0.125	1 ½

Type Ref	Length	Ordering Code
AIF 2430	1½	AIF 2430 24

Please note : errors and omissions excepted.



Oil Impregnated Sintered Bronze Bars

Imperial & Metric

Cored Bars

Imperial (inches)			Metric Equiv. (mm)		
Bore	Outside Diameter	Length	Bore	Outside Diameter	Length
1/2	1	6 1/2	12.7	25.4	165
1/2	1 1/2	6 1/2	12.7	38.1	165
5/8	1 3/8	6 1/2	15.88	34.9	165
5/8	1 1/2	6 1/2	15.88	38.1	165
3/4	2	6 1/2	19.05	50.8	165
7/8	1 1/2	6 1/2	22.23	38.1	165
7/8	2	6 1/2	22.23	50.8	165
7/8	2 1/4	6 1/2	22.23	57.2	165
1	2	6 1/2	25.4	50.8	165
1	3	6 1/2	25.4	76.2	165
1 1/2	3	6 1/2	38.1	76.2	165
2	3	6 1/2	50.8	76.2	165
2	4	6 1/2	50.8	101.6	165
2 1/2	4	6 1/2	63.5	101.6	165
3 3/4	5	6 1/2	95.25	127.0	165
4	6	6 1/2	101.6	152.4	165

Solid Bars

Imperial (inches)		Metric Equiv. (mm)	
Outside Diameter	Length	Outside Diameter	Length
3/8	3	9.5	76.2
1/2	6 1/2	12.7	165
0.787	2.047	20	52
1	6 1/2	25.4	165
1 1/2	6 1/2	38.1	165
1.574	2.047	40	52
2	6 1/2	50.8	165
2.362	2.362	60	60
3.149	3.149	80	80
6	6 1/2	152	165

Please note : errors and omissions excepted.