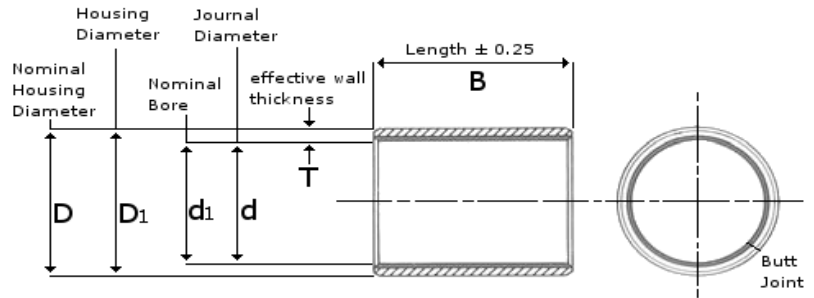




**PTFE Lined Steel Split Bush**  
**Metric: Plain**



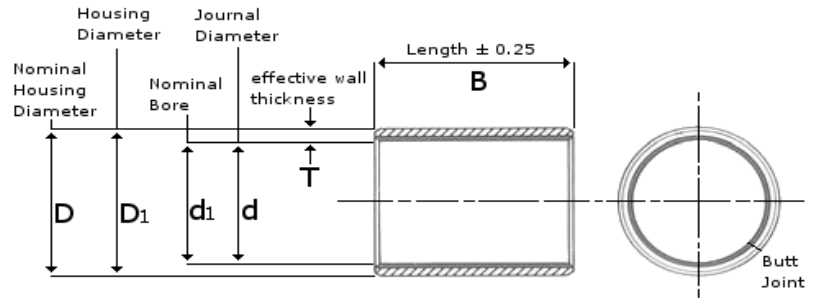
All Dimensions in mm unless stated otherwise.

d <sub>1</sub>	D	d	D <sub>1</sub>	T	B					
2	3.50	2.000 1.994	3.500 3.508	0.750 0.730	3 MB 0203DU	5 MB 0205DU				
3	4.50	3.000 2.994	4.500 4.508		3 MB 0303DU	5 MB 0305DU	6 MB 0306DU			
4	5.50	4.000 3.992	5.500 5.508		3 MB 0403DU	4 MB 0404DU	6 MB 0406DU	10 MB 0410DU		
5	7.00	4.990 4.978	7.000 7.015		5 MB 0505DU	8 MB 0508DU	10 MB 0510DU			
6	8.00	5.990 5.978	8.000 8.015	1.005 0.980	6 MB 0606DU	8 MB 0608DU	10 MB 0610DU			
7	9.00	6.987 6.972	9.000 9.015		10 MB 0710DU					
8	10.00	7.987 7.972	10.000 10.015		8 MB 0808DU	10 MB 0810DU	12 MB 0812DU			
10	12.00	9.987 9.972	12.000 12.018		8 MB 1008DU	10 MB 1010DU	12 MB 1012DU	15 MB 1015DU	20 MB 1020DU	
12	14.00	11.984 11.966	14.000 14.018		8 MB 1208DU	10 MB 1210DU	12 MB 1212DU	15 MB 1215DU	20 MB 1220DU	25 MB 1225DU
13	15.00	12.984 12.966	15.000 15.018		10 MB 1310DU	20 MB 1320DU				
14	16.00	13.984 13.966	16.000 16.018		5 MB 1405DU	10 MB 1410DU	12 MB 1412DU	15 MB 1415DU	20 MB 1420DU	25 MB 1425DU
15	17.00	14.984 14.966	17.000 17.018		10 MB 1510DU	12 MB 1512DU	15 MB 1515DU	20 MB 1520DU	25 MB 1525DU	
16	18.00	15.984 15.966	18.000 18.018		10 MB 1610DU	12 MB 1612DU	15 MB 1615DU	20 MB 1620DU	25 MB 1625DU	
17	19.00	16.984 16.966	19.000 19.021		20 MB 1720DU					
18	20.00	17.984 17.966	20.000 20.021	15 MB 1815DU	20 MB 1820DU	25 MB 1825DU				
20	23.00	19.980 19.959	23.000 23.021	1.505 1.475	10 MB 2010DU	15 MB 2015DU	20 MB 2020DU	25 MB 2025DU	30 MB 2030DU	
22	25.00	21.980 21.959	25.000 25.021		15 MB 2215DU	20 MB 2220DU	25 MB 2225DU	30 MB 2230DU		
24	27.00	23.980 23.959	27.000 27.021		15 MB 2415DU	20 MB 2420DU	25 MB 2425DU	30 MB 2430DU		
25	28.00	24.980 24.959	28.000 28.021		15 MB 2515DU	20 MB 2520DU	25 MB 2525DU	30 MB 2530DU	50 MB 2550DU	

Please note : errors and omissions excepted.



**PTFE Lined Steel Split Bush**  
**Metric: Plain**



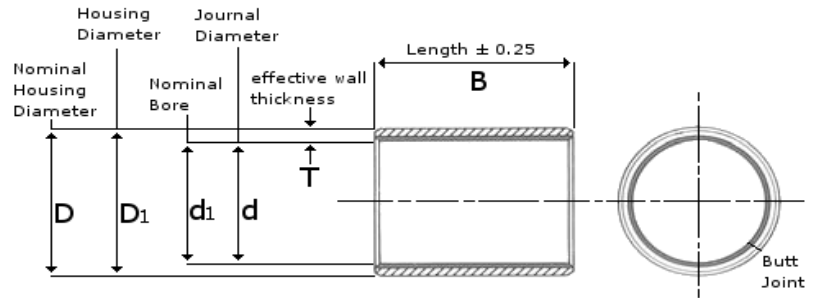
All Dimensions in mm unless stated otherwise.

d <sub>1</sub>	D	d	D <sub>1</sub>	T	B						
28	32.00	27.980 27.959	32.000 32.025	2.005 1.970	15 MB 2815DU	20 MB 2820DU	25 MB 2825DU	30 MB 2830DU			
30	34.00	29.980 29.959	34.000 34.025		15 MB 3015DU	20 MB 3020DU	25 MB 3025DU	30 MB 3030DU	40 MB 3040DU		
32	36.00	31.975 31.950	36.000 36.025		20 MB 3220DU	30 MB 3230DU	40 MB 3240DU				
35	39.00	34.975 34.950	39.000 39.025		20 MB 3520DU	30 MB 3530DU	35 MB 3535DU	40 MB 3540DU	50 MB 3550DU		
37	41.00	36.975 36.950	41.000 41.025		20 MB 3720DU						
40	44.00	39.975 39.950	44.000 44.025		20 MB 4020DU	30 MB 4030DU	40 MB 4040DU	50 MB 4050DU			
45	50.00	44.975 44.950	50.000 50.025		20 MB 4520DU	30 MB 4530DU	40 MB 4540DU	45 MB 4545DU	50 MB 4550DU		
50	55.00	49.975 49.950	55.000 55.030		20 MB 5020DU	30 MB 5030DU	40 MB 5040DU	50 MB 5050DU	60 MB 5060DU		
55	60.00	54.970 54.940	60.000 60.030		20 MB 5520DU	25 MB 5525DU	30 MB 5530DU	40 MB 5540DU	50 MB 5550DU	55 MB 5555DU	60 MB 5560DU
60	65.00	59.970 59.940	65.000 65.030		20 MB 6020DU	30 MB 6030DU	40 MB 6040DU	60 MB 6060DU	70 MB 6070DU		
65	70.00	64.970 64.940	70.000 70.030	30 MB 6530DU	50 MB 6550DU	70 MB 6570DU					
70	75.00	69.970 69.940	75.000 75.030	40 MB 7040DU	50 MB 7050DU	70 MB 7070DU					
75	80.00	74.970 74.940	80.000 80.030	60 MB 7560DU	80 MB 7580DU						
80	85.00	80.000 79.954	85.000 85.035	60 MB 8060DU	100 MB 80100DU						
85	90.00	85.000 84.946	90.000 90.035	30 MB 8530DU	60 MB 8560DU	100 MB 85100DU					
90	95.00	90.000 89.946	95.000 95.035	60 MB 9060DU	100 MB 90100DU						
95	100.00	95.000 94.946	100.000 100.035	60 MB 9560DU	100 MB 95100DU						
100	105.00	100.000 99.946	105.000 105.035	60 MB 10060DU	115 MB 100115DU						

Please note : errors and omissions excepted.



**PTFE Lined Steel Split Bush**  
**Metric: Plain**



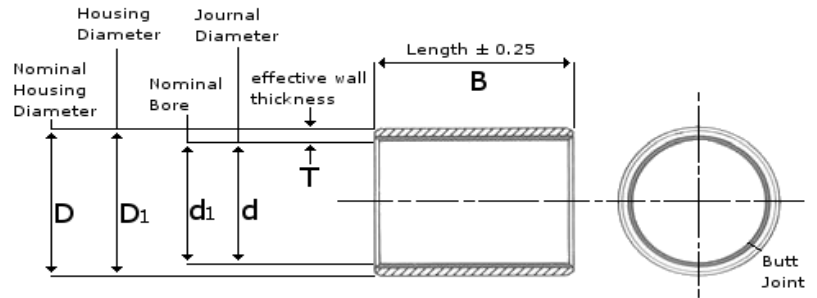
All Dimensions in mm unless stated otherwise.

d <sub>1</sub>	D	d	D <sub>1</sub>	T	B
105	110.00	105.00 104.946	110.000 110.035		60 MB 10560DU 115 MB 105115DU
110	115.00	110.000 109.946	115.000 115.035	2.490 2.440	60 MB 11060DU 115 MB 110115DU
115	120.00	115.000 114.946	120.000 120.035		50 MB 11550DU 70 MB 11570DU
120	125.00	120.000 119.946	125.000 125.040		50 MB 12050DU 60 MB 12060DU 100 MB 120100DU
125	130.00	125.000 124.937	130.000 130.040		100 MB 125100DU
130	135.00	130.000 129.937	135.000 135.040		60 MB 13060DU 100 MB 130100DU
135	140.00	135.000 134.937	140.000 140.040		60 MB 13560DU 80 MB 13580DU
140	145.00	140.000 139.937	145.000 145.040		60 MB 14060DU 100 MB 140100DU
150	155.00	150.000 149.937	155.000 155.040		60 MB 15060DU 80 MB 15080DU 100 MB 150100DU
160	165.00	160.000 159.937	165.000 165.040		80 MB 16080DU 100 MB 160100DU
170	175.00	170.000 169.937	175.000 175.040	2.465	
180	185.00	180.000 179.937	185.000 185.046	2.415	100 MB 180100DU
190	195.00	190.000 189.928	195.000 195.046		
200	205.00	200.000 199.928	205.000 205.046		100 MB 200100DU
210	215.00	210.000 209.928	215.000 215.046		100 MB 210100DU
220	225.00	220.000 219.928	225.000 225.046		100 MB 220100DU
230	235.00	230.000 229.928	235.000 235.046		
240	245.00	240.000 239.928	245.000 245.046		
250	255.00	250.000 249.928	255.000 255.052		100 MB 250100DU

Please note : errors and omissions excepted.



**PTFE Lined Steel Split Bush**  
**Metric: Plain**



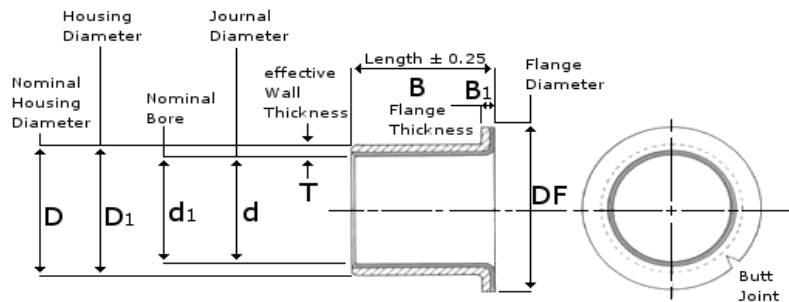
All Dimensions in mm unless stated otherwise.

d <sub>1</sub>	D	d	D <sub>1</sub>	T	B	
260	265.00	260.000	265.000	2.465	100 MB 300100DU	
		259.919	265.052			
270	275.00	270.000	275.000			
		269.919	275.052			
280	285.00	280.000	285.000			
		279.919	285.052			
290	295.00	290.000	295.000			
		289.919	295.052			
300	305.00	300.000	305.000			
		299.919	305.052			
320	325.00	319.938	325.000			2.415
		319.849	325.057			
340	345.00	339.938	345.000			
		339.849	345.057			
360	365.00	359.938	365.000			
		359.849	365.057			
380	385.00	379.938	385.000			
		379.849	385.057			
400	405.00	399.938	405.000			
		399.849	405.059			

Please note : errors and omissions excepted.



**PTFE Lined Steel Split Bush  
Metric: Flanged**



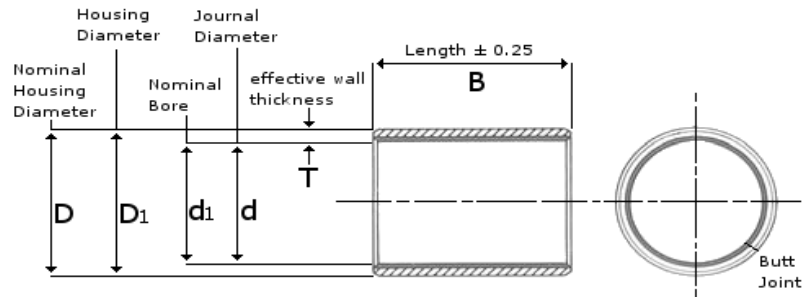
All Dimensions in mm unless stated otherwise.

d <sub>1</sub>	D	DF	d	D <sub>1</sub>	B <sub>1</sub>	T	B				
6	8.00	12.00	5.990 5.978	8.014 8.000	1.000 0.800	1.005 0.980	4 FMB 0604DU	8 FMB 0608DU			
8	10.00	15.00	7.987 7.972	10.015 10.000			5.5 FMB 0805.5DU	7.5 FMB 0807.5DU	9.5 FMB 0809.5DU		
10	12.00	18.00	9.987 9.972	12.018 12.000			7 FMB 1007DU	9 FMB 1009DU	12 FMB 1012DU	17 FMB 1017DU	
12	14.00	20.00	11.984 11.966	14.018 14.000			7 FMB 1207DU	9 FMB 1209DU	12 FMB 1212DU	17 FMB 1217DU	
14	16.00	22.00	13.984 13.966	16.018 16.000			12 FMB 1412DU	17 FMB 1417DU			
15	17.00	23.00	14.984 14.966	17.018 17.000			9 FMB 1509DU	12 FMB 1512DU	17 FMB 1517DU		
16	18.00	24.00	15.984 15.966	18.018 18.000			12 FMB 1612DU	17 FMB 1617DU			
18	20.00	26.00	17.984 17.966	20.021 20.000			12 FMB 1812DU	17 FMB 1817DU	22 FMB 1822DU		
20	23.00	30.00	19.980 19.959	23.021 23.000			1.500	1.505	11.5 FMB 2011.5DU	16.5 FMB 2016.5DU	21.5 FMB 2021.5DU
25	28.00	35.00	24.980 24.959	28.021 28.000			1.300	1.475	11.5 FMB 2511.5DU	16.5 FMB 2516.5DU	21.5 FMB 2521.5DU
30	34.00	42.00	29.980 29.959	34.025 34.000	2.000 1.800	2.005 1.970	16 FMB 3016DU	26 FMB 3026DU			
35	39.00	47.00	34.975 34.950	39.025 39.000			16 FMB 3516DU	26 FMB 3526DU			
40	44.00	52.00	39.975 39.950	44.025 44.000			16 FMB 4016DU	26 FMB 4026DU			

Please note : errors and omissions excepted.



**PTFE Lined Steel Split Bush**  
**Imperial: Plain**



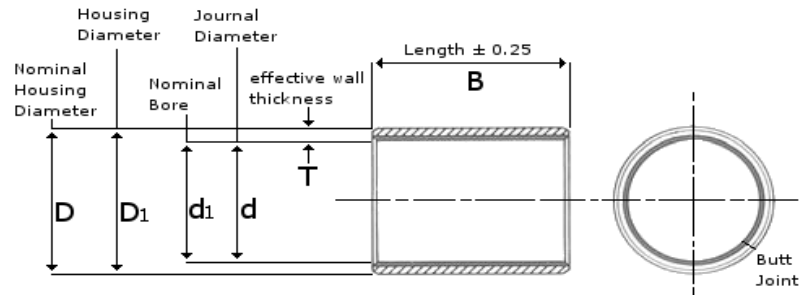
All Dimensions in inches unless stated otherwise.

d <sub>1</sub>	D	d	D <sub>1</sub>	T	B				
1/8	3/16	0.1243 0.1236	0.1873 0.1878	0.0315 0.0305	1/8 02DU02		3/16 02DU03		
5/32	7/32	0.1554 0.1547	0.2186 0.2191		5/32 025DU025		1/4 025DU04		
3/16	1/4	0.1865 0.1858	0.2497 0.2503	0.0471 0.0461	3/16 03DU03		1/4 03DU04	3/8 03DU06	
1/4	5/16	0.2490 0.2481	0.3122 0.3128		1/4 04DU04		3/8 04DU06		
5/16	3/8	0.3115 0.3106	0.3747 0.3753	0.0627 0.0615	3/8 05DU06		1/2 05DU08		
3/8	15/32	0.3740 0.3731	0.4684 0.4691		3/4 06DU06		1/2 06DU08	3/4 06DU12	
7/16	17/32	0.4365 0.4355	0.5309 0.5316	0.0784 0.0770	1/2 07DU08		3/4 17DU12		
1/2	19/32	0.4990 0.4980	0.5934 0.5941		3/8 08DU06		1/2 08DU08	5/8 08DU10	7/8 08DU14
9/16	21/32	0.5615 0.5605	0.6559 0.6566	0.0784 0.0770	1/2 09DU08		3/4 09DU12		
5/8	23/32	0.6240 0.6230	0.7184 0.7192		1/2 10DU08		5/8 10DU10	3/4 10DU12	7/8 10DU14
11/16	25/32	0.6865 0.6855	0.7809 0.7817	0.0784 0.0770	7/8 11DU14				
3/4	7/8	0.7491 0.7479	0.8747 0.8755		1/2 12DU08		3/4 12DU12	1 12DU16	
7/8	1	0.8741 0.8729	0.9997 1.0005	0.0784 0.0770	3/4 14DU12		7/8 14DU14	1 14DU16	
1	1 1/8	0.9991 0.9979	1.1246 1.1256		3/4 16DU12		1 16DU16	1 1/2 16DU24	
1 1/8	1 9/32	1.1238 1.1226	1.2808 1.2818	0.0784 0.0770	3/4 18DU12		1 18DU16		
1 1/4	1 13/32	1.2488 1.2472	1.4058 1.4068		3/4 20DU12		1 20DU16	1 1/4 20DU20	1 3/4 20DU28
1 3/8	1 17/32	1.3738 1.3722	1.5308 1.5318	0.0784 0.0770	1 22DU16		1 3/8 22DU22	1 3/4 22DU28	
1 1/2	1 21/32	1.4988 1.4972	1.6558 1.6568		1 24DU16		1 1/4 24DU20	1 1/2 24DU24	2 24DU32
1 5/8	1 25/32	1.6238 1.6222	1.7808 1.7818		1 26DU16		1 1/2 26DU24		

Please note : errors and omissions excepted.



**PTFE Lined Steel Split Bush  
Imperial: Plain**



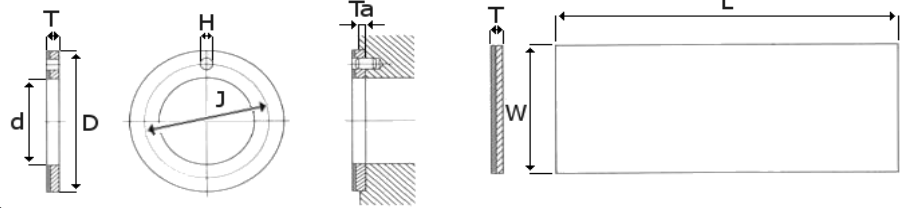
All Dimensions in inches unless stated otherwise.

d <sub>1</sub>	D	d	D <sub>1</sub>	T	B			
1 3/4	1 15/16	1.7487 1.7471	1.9371 1.9381	0.0941 0.0923	1 28DU16	1 1/2 28DU24	1 3/4 28DU28	2 28DU32
1 7/8	2 1/16	1.8737 1.8721	2.0621 2.0633		1 30DU16	1 7/8 30DU30	2 1/4 30DU36	
2	2 3/16	1.9987 1.9969	2.1871 2.1883		1 32DU16	1 1/2 32DU24	2 32DU32	2 1/2 32DU40
2 1/4	2 7/16	2.2507 2.2489	2.4365 2.4377	0.0928 0.0902	2 36DU32	2 1/4 36DU36	2 1/2 36DU40	3 36DU48
2 1/2	2 11/16	2.5011 2.4993	2.6869 2.6881		2 40DU32	2 1/2 40DU40	3 40DU48	3 1/2 40DU56
2 3/4	2 15/16	2.7500 2.7482	2.9358 2.9370		2 44DU32	2 1/2 44DU40	3 44DU48	3 1/2 44DU56
3	3 3/16	3.0000 2.9982	3.1858 3.1872		2 48DU32	3 48DU48	3 3/4 48DU60	
3 1/2	3 11/16	3.5000 3.4978	3.6858 3.6872		2 1/2 56DU40	3 56DU48	3 3/4 56DU60	
4	4 3/16	4.0000 3.9978	4.1858 4.1872		3 64DU48	3 3/4 64DU60	4 3/4 64DU76	
5	5 3/16	4.9986 4.9961	5.1844 5.1860		3 80DU48	3 3/4 80DU60		
6	6 3/16	6.0000 5.9975	6.1858 6.1874		3 96DU48	3 3/4 96DU60		
7	7 3/16	6.9954 6.9929	7.1812 7.1830		3 3/4 112DU60			

Please note : errors and omissions excepted.



**PTFE Lined Steel  
Thrust Washers & Strip  
Metric**



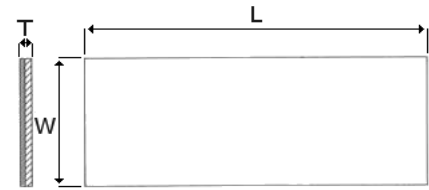
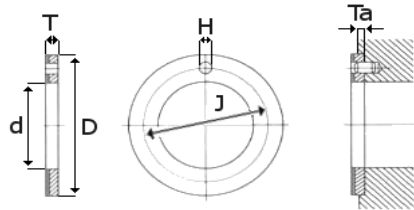
All Dimensions in mm unless stated otherwise

Part no	d	D	T	H	J	Ta
WC08DU	10.00	20.00	1.50	NO HOLE		0.95
	10.25	19.75	1.45			1.20
WC10DU	12.00	24.00	1.50	1.625	18.12	0.95
	12.25	23.75	1.45	1.875	17.88	1.20
WC12DU	14.00	26.00	1.50	2.125	22.12	0.95
	14.25	25.75	1.45	2.375	19.88	1.20
WC14DU	16.00	30.00	1.50	2.125	22.12	0.95
	16.25	29.75	1.45	2.375	21.88	1.20
WC16DU	18.00	32.00	1.50	2.125	25.12	0.95
	18.25	31.75	1.45	2.375	24.88	1.20
WC18DU	20.00	36.00	1.50	3.125	28.12	0.95
	20.25	35.75	1.45	3.375	27.88	1.20
WC20DU	22.00	38.00	1.50	3.125	30.12	0.95
	22.25	37.75	1.45	3.375	29.88	1.20
WC22DU	24.00	42.00	1.50	3.125	33.12	0.95
	24.25	41.75	1.45	3.375	32.88	1.20
WC24DU	26.00	44.00	1.50	3.125	35.12	0.95
	26.25	43.75	1.45	3.375	34.88	1.20
WC25DU	28.00	48.25	1.50	4.125	38.12	0.95
	28.25	47.75	1.45	4.375	37.88	1.20
WC30DU	32.00	54.00	1.50	4.125	43.12	0.95
	32.25	53.75	1.45	4.375	42.88	1.20
WC35DU	38.00	62.00	1.50	4.125	50.12	0.95
	38.25	61.75	1.45	4.375	49.88	1.20
WC40DU	42.00	66.00	1.50	4.125	54.12	0.95
	42.25	65.75	1.45	4.375	53.88	1.20
WC45DU	48.00	74.00	2.00	4.125	61.12	1.45
	48.25	73.75	1.95	4.375	60.88	1.70
WC50DU	52.00	78.00	2.00	4.125	65.12	1.45
	52.25	77.75	1.95	4.375	64.88	1.70
WC60DU	62.00	90.00	2.00	4.125	76.12	1.45
	62.25	89.75	1.95	4.375	75.88	1.70

Metric Sizes In Lengths (L) of Approx. 500mm		
Part No.	T +0/-0.04 mm	W mm
075150DU	0.75	150
100200DU	1.00	200
150240DU	1.50	240
200240DU	2.00	240
250240DU	2.50	240
306240DU	3.06	240

Please note : errors and omissions excepted.





**PTFE Lined Steel  
Thrust Washers & Strip  
Metric**

All Dimensions in mm unless stated otherwise

Part no	d	D	T	H	J	Ta
DU06	0.500	0.875	0.063	0.067	0.692	0.040
	0.510	0.865	0.061	0.077	0.682	0.050
DU07	0.562	1.000	0.063	0.067	0.786	0.040
	0.572	0.990	0.061	0.077	0.776	0.050
DU08	0.625	1.125	0.063	0.099	0.880	0.040
	0.635	1.115	0.061	0.109	0.870	0.050
DU09	0.687	1.187	0.063	0.099	0.942	0.040
	0.697	1.177	0.061	0.109	0.932	0.050
DU10	0.750	1.250	0.063	0.099	1.005	0.040
	0.760	1.240	0.061	0.109	0.885	0.050
DU11	0.812	1.375	0.063	0.099	1.009	0.040
	0.822	1.365	0.061	0.109	1.089	0.050
DU12	0.875	1.500	0.063	0.130	1.192	0.040
	0.885	1.490	0.061	0.140	1.182	0.050
DU14	1.000	1.750	0.063	0.130	1.380	0.040
	1.010	1.740	0.061	0.140	1.370	0.050
DU16	1.125	2.000	0.063	0.161	1.567	0.040
	1.135	1.990	0.061	0.171	1.557	0.050
DU18	1.250	2.125	0.063	0.161	1.692	0.040
	1.260	2.115	0.061	0.171	1.682	0.050
DU20	1.375	2.250	0.063	0.161	1.817	0.040
	1.385	2.240	0.061	0.171	1.807	0.050
DU22	1.500	2.500	0.063	0.192	2.005	0.040
	1.510	2.490	0.061	0.202	1.995	0.050
DU24	1.625	2.625	0.063	0.192	2.130	0.040
	1.635	2.615	0.061	0.202	2.120	0.050
DU26	1.750	2.750	0.063	0.192	2.255	0.040
	1.760	2.740	0.061	0.202	2.245	0.050
DU28	2.000	3.000	0.093	0.192	2.505	0.070
	2.010	2.990	0.091	0.202	2.495	0.080
DU30	2.125	3.125	0.093	0.192	2.630	0.070
	2.135	3.115	0.091	0.202	2.620	0.080
DU32	2.250	3.250	0.093	0.192	2.755	0.070
	2.260	3.240	0.091	0.202	2.745	0.080

Metric Sizes In Lengths (L) of 18in		
Group No.	T	W
0	0.0277-0.0293	2.75
1	0.0430-0.0447	4
2	0.0586-0.0602	4
3	0.0740-0.0756	4
4	0.0897-0.0913	4
5	0.1190-0.1210	4

Please note : errors and omissions excepted.