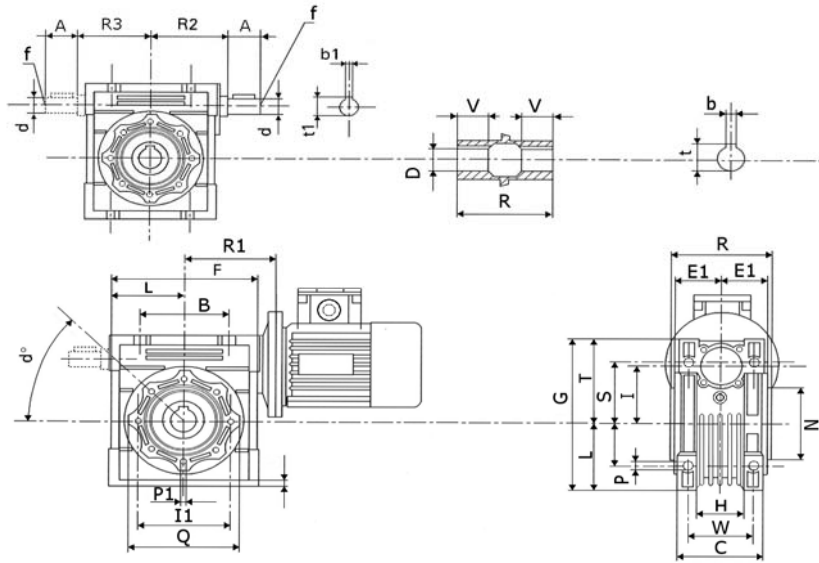




**CHM - CHMR -
CHME - CHMRE
DIMENSIONS**



Unit Type	B	A	F	D (H7)	d (j6)	G	H	R1	R	R2	R3	L	I	C	I1	N (h8)	E1	P	Q
030	54	20	80	14	9	97	32	55	63	51	45	40	30	56	65	55	29	6.5	75
040	70	23	100	18	11	121.5	43	70	78	60	53	50	40	71	75	60	36.5	6.5	87
050	80	30	120	25	14	144	49	80	92	74	64	60	50	85	85	70	43.5	8.5	100
063	100	40	144	25	19	174	67	95	112	90	75	72	63	103	95	80	53	8.5	110
075	120	50	172	28	24	205	72	112.5	120	105	90	86	75	112	115	95	57	11	140
090	140	50	208	35	24	238	74	129.5	140	125	108	103	90	130	130	110	67	13	160
110	170	60	252.5	42	28	295	-	160	155	142	135	127.5	110	144	165	130	74	14	200
130	200	80	292.5	45	30	335	-	180	170	162	155	147.5	130	155	215	180	81	16	250

Unit Type	S	T	U	V	Z	W	P1	d°	b	b1	f	t	t1	Weight in kg. excluding motor
030	44	57	5.5	21	27	44	M6x11(n.4)	0°	5	3	-	16.3	10.2	1.2
040	55	71.5	6.5	26	35	60	M6x8(n.4)	45°	6	4	-	20.8	12.5	2.3
050	64	84	7	30	40	70	M8x10(n.4)	45°	8	5	M6	28.3	16.0	3.5
063	80	102	8	36	50	85	M8x14(n.4)	45°	8	6	M6	28.3	21.5	6.2
075	93	119	10	40	60	90	M8x14(n.4)	45°	8	8	M8	31.3	27.0	8.5
090	102	135	11	45	70	100	M10x18(n.4)	45°	10	8	M8	38.3	27.0	12
110	125	167.5	14	50	85	115	M10x18(n.4)	45°	12	8	M10	45.3	31.0	35
130	140	187.5	15	60	100	120	M12x21(n.4)	45°	14	8	M10	48.8	33.0	53

If a dimension is critical to your application please contact our sales department for confirmation.
Please note : errors and omissions excepted.