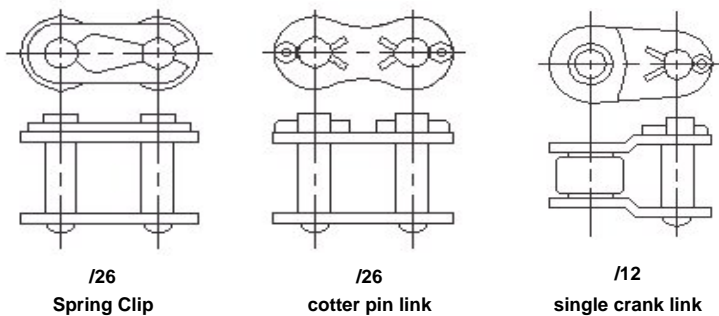
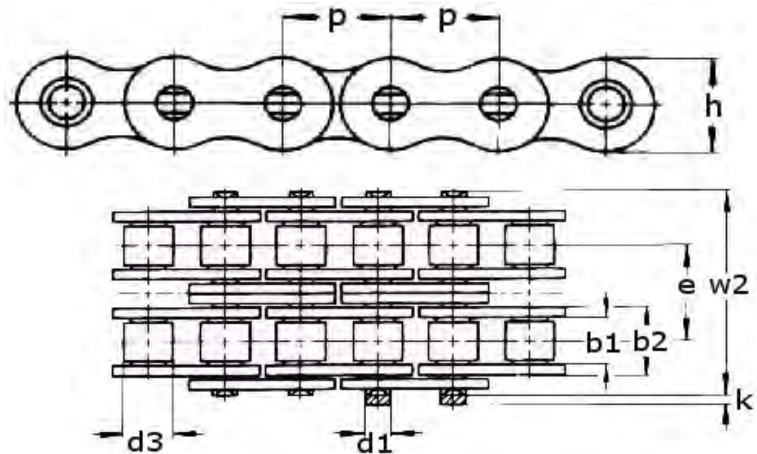


**Stainless Steel  
Roller Chain British Standard  
SIMPLEX  
To DIN8187/8188**

Product Code	ISO DIN Code	Pitch (p)		b1 min	b2 max	d3 max	d1	h max	k	W1 max	Break load DIN kN min	Weight kg/m
		mm	inch									
05B-1SS	05B-1	8	-	3	4.77	5	2.31	7.1	3.1	8.6	4	0.18
06B-1SS	06B-1	9.525	3/8	5.72	8.53	6.35	3.28	8.2	3.3	13.5	7	0.41
081-1BSS	81	12.7	1/2	3.3	5.8	7.75	3.66	9.9	1.5	10.2	7	0.28
08NSS	-	12.7	1/2	4.88	7.2	7.75	3.66	9.9	1.5	11.2	7	0.33
08B-1SS	08B-1	12.7	1/2	7.75	11.3	8.51	4.45	11.8	3.9	17	12	0.7
10B-1SS	10B-1	15.88	5/8	9.65	13.28	10.16	5.08	14.7	4.1	19.6	14.5	0.91
12B-1SS	12B-1	19.05	3/4	11.68	15.62	12.07	5.72	16.1	4.6	22.7	18.5	1.18
16B-1SS	16B-1	25.4	1	17.02	25.4	15.88	8.28	21	5.4	36.1	40	2.5

All dimensions in mm unless stated  
Please note : errors and omissions excepted.

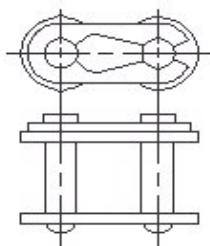




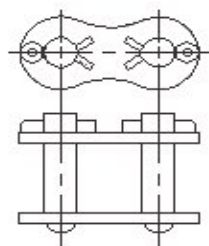
**Stainless Steel**  
**Roller Chain British Standard**  
**DUPLEX**  
**To DIN8187/8188**

Product Code	ISO DIN Code	Pitch (p)		b1 min	b2 max	d3 max	d1	h max	k	w2 max	e	Break load DIN kN min	Weight kg/m
		mm	inch										
05B-2SS	05B-2	8	-	3	4.77	5	2.31	7.1	3.1	14.3	5.64	6	0.36
06B-2SS	06B-2	9.525	3/8	5.72	8.53	6.35	3.28	8.2	3.3	23.8	10.24	11.9	0.78
08B-2SS	08B-2	12.7	1/2	7.75	11.3	8.51	4.45	11.8	3.9	31	13.92	20.4	1.36
10B-2SS	10B-2	15.88	5/8	9.65	13.28	10.16	5.08	14.7	4.1	36.2	16.59	24.7	1.82
12B-2SS	12B-2	19.05	3/4	11.68	15.62	12.07	5.72	16.1	4.6	42.2	19.46	31.5	2.38
16B-2SS	16B-2	25.4	1	17.02	25.4	15.88	8.28	21	5.4	68	31.88	68	5.1

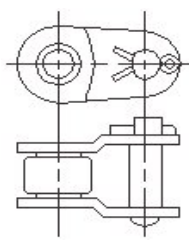
All dimensions in mm unless stated  
 Please note : errors and omissions excepted.



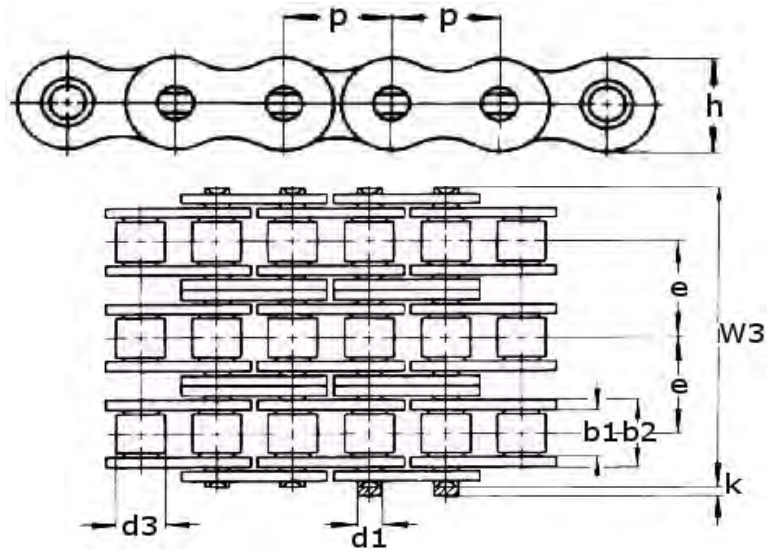
**/26**  
Spring Clip



**/26**  
cotter pin link



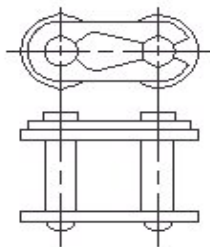
**/12**  
single crank link



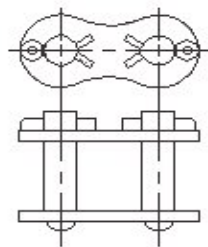
**Stainless Steel  
Roller Chain British Standard  
TRIPLEX  
To DIN8187/8188**

Product Code	ISO DIN Code	Pitch (p)		b1 min	b2 max	d3 max	d1	h max	k	w3 max	e	Break load DIN kN min	Weight kg/m
		mm	inch										
06B-3SS	06B-3	9.525	3/8	5.72	8.53	6.35	3.28	8.2	3.3	34	10.24	9	1.18
08B-3SS	08B-3	12.7	1/2	7.75	11.3	8.51	4.45	11.8	3.9	44.9	13.92	30	2.01
10B-3SS	10B-3	15.88	5/8	9.65	13.28	10.16	5.08	14.7	4.1	52.8	16.59	36	2.7
12B-3SS	12B-3	19.05	3/4	11.68	15.62	12.07	5.72	16.1	4.6	61.7	19.46	47	3.14
16B-3SS	16B-3	25.4	1	17.02	25.4	15.88	8.28	21	5.4	99.9	31.88	102	7.8

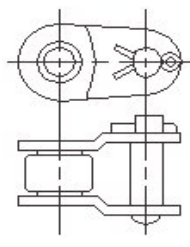
All dimensions in mm unless stated  
Please note : errors and omissions excepted.



**/26  
Spring Clip**



**/26  
cotter pin link**



**/12  
single crank link**