

Roller Chain
British Standard
SIMPLEX
To DIN8187
(ISO 606-1982 & SMS 1613)

Product Code	ISO DIN Code	Pitch (p)		b1 min	b2 max	d3 max	d1	h max	k	w1 max	Break load		Weight kg/m
		mm	inch								DIN kN	min W kN median	
04B-1	4	6	-	2.8	4.1	4	1.85	5	2.9	7.4	3	3.3	0.15
05B-1	05B-1	8	-	3	4.77	5	2.31	7.1	3.1	8.6	5	5.9	0.18
06B-1	06B-1*	9.525	3/8	5.72	8.53	6.35	3.28	8.2	3.3	13.5	9	10.1	0.41
081-1B	81	12.7	1/2	3.3	5.8	7.75	3.66	9.9	1.5	10.2	8.2	9.97	0.28
08N	332	12.7	1/2	4.88	7.2	7.75	3.66	9.9	1.5	11.2	8.2	10	0.33
083-1M	83	12.7	1/2	4.88	7.9	7.75	4.09	10.3	1.5	12.9	12	12.7	0.42
08L-1	-	12.7	1/2	6.4	9.78	7.75	3.97	11.5	3.9	15.4	16	17.5	0.5
**08B-1	08B-1	12.7	1/2	7.75	11.3	8.51	4.45	11.8	3.9	17	18	19	0.7
**10B-1	10B-1	15.875	5/8	9.65	13.28	10.16	5.08	14.7	4.1	19.6	22.4	28.4	0.91
**12B-1	12B-1	19.05	3/4	11.68	15.62	12.07	5.72	16.1	4.6	22.7	29	32.5	1.18
**16B-1	16B-1	25.4	1	17.02	25.4	15.88	8.28	21	5.4	36.1	60	76.5	2.68
20B-1	20B-1	31.75	1 1/4	19.56	29	19.05	10.19	26.4	6.1	43.2	95	108	3.5
24B-1	24B-1	38.1	1 1/2	25.4	37.9	25.4	14.63	33.4	6.6	53.4	160	185.5	6.8
28B-1	28B-1	44.45	1 3/4	30.99	46.5	27.94	15.9	37	7.4	65.1	200	237	8.5
32B-1	32B-1	50.8	2	30.99	45.5	29.21	17.81	42.2	7.9	67.4	250	276	10.5
40B-1	40B-1	63.5	2 1/2	38.1	55.7	39.37	22.89	52.9	10	82.6	355	406	16.4
48B-1	48B-1	76.2	3	45.72	70.5	48.26	29.24	63.8	10	99.1	560	600	25

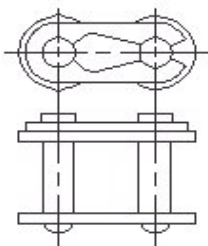
All dimensions in mm unless stated

* with straight side plates

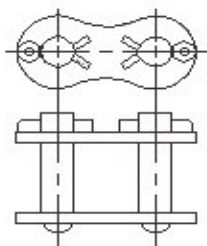
Zinc or nickel plated chains on request (only 80% of the breaking load of standard chain)

**Copperhead Easy Break chain as standard

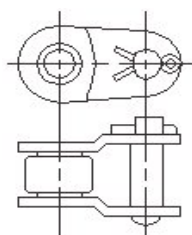
Please note : errors and omissions excepted.



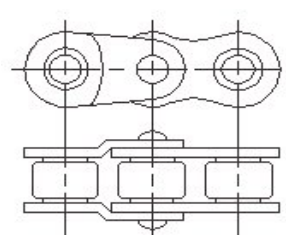
/26
Spring Clip



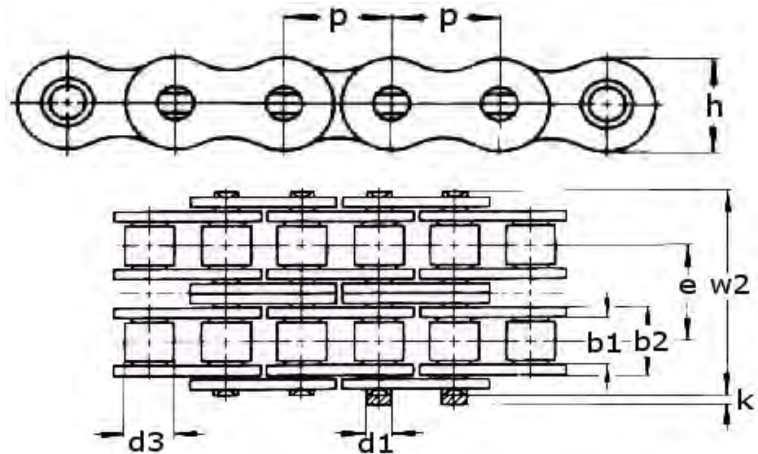
/26
cotter pin link



/12
single crank link



/30
double crank link



Roller Chain
British Standard
DUPLEX
To DIN8187
(ISO 606-1982 & SMS 1613)

Product Code	ISO DIN Code	Pitch		b1 min	b2 max	d3 max	d1	h max	k	e	w2 max	Break load		Weight kg/m
		mm	inch									DIN kN min	W kN median	
04B-2	42	6	-	2.8	4.1	4	1.85	5	2.9	13.3	5.5	5	5.8	0.23
05B-2	05B-2	8	-	3	4.77	5	2.31	7.1	3.1	14.3	5.64	7.8	8.6	0.36
06B-2	06B-2*	9.525	3/8	5.72	8.53	6.35	3.28	8.2	3.3	23.8	10.24	16.9	17.7	0.78
**08B-2	08B-2	12.7	1/2	7.75	11.3	8.51	4.45	11.8	3.9	31	13.92	32	39	1.36
*10B-2	10B-2	15.88	5/8	9.65	13.28	10.16	5.08	14.7	4.1	36.2	16.59	44.5	55	1.82
**12B-2	12B-2	19.05	3/4	11.68	15.62	12.07	5.72	16.1	4.6	42.2	19.46	57.8	65	2.38
**16B-2	16B-2	25.4	1	17.02	25.4	15.88	8.28	21	5.4	68	31.88	106	149.5	5.3
20B-2	20B-2	31.75	1 1/4	19.56	29	19.05	10.19	26.4	6.1	79	36.45	170	217.5	7.3
24B-2	24B-2	38.1	1 1/2	25.4	37.9	25.4	14.63	33.4	6.6	101	48.36	280	366	13.4
28B-2	28B-2	44.45	1 3/4	30.99	46.5	27.94	15.9	37	7.4	124	59.56	360	469	16.6
32B-2	32B-2	50.8	2	30.99	45.5	29.21	17.81	42.2	7.9	126	58.55	450	560	21
40B-2	40B-2	63.5	2 1/2	38.1	55.7	39.37	22.89	52.9	10	154	72.29	630	806	32.6
48B-2	48B-2	76.2	3	45.72	70.5	48.26	29.24	63.8	10	190	91.21	1000	1100	50

All dimensions in mm unless stated

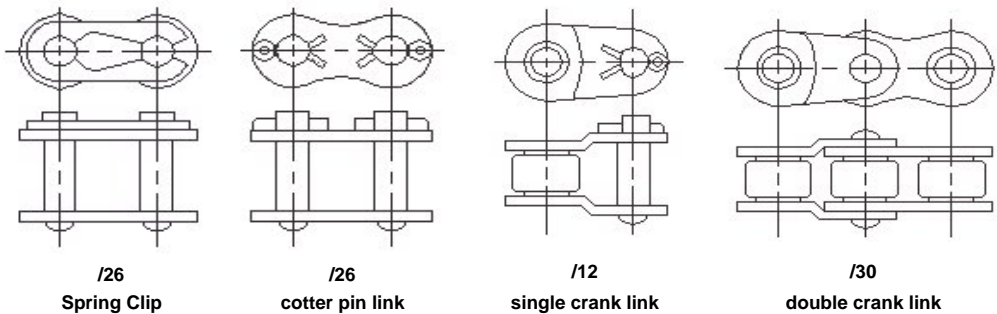
* with straight side plates

Zinc or nickel plated chains on request

(only 80% of the breaking load of standard chain)

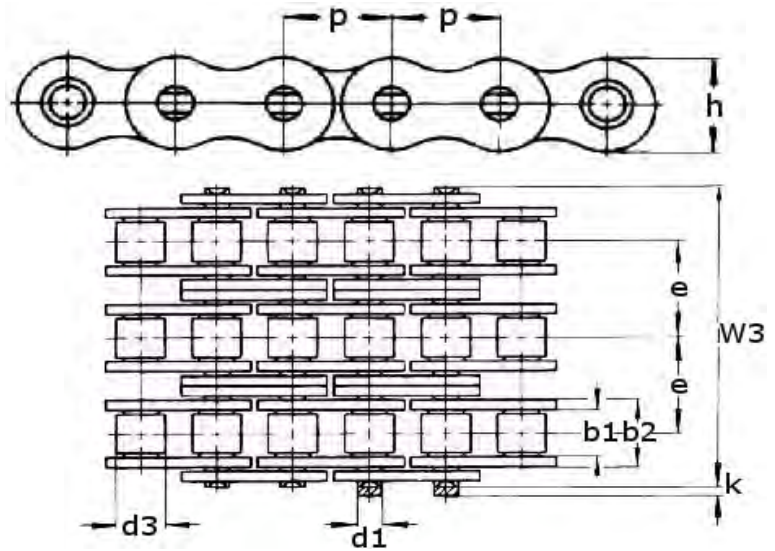
**Copperhead Easy Break chain as standard

Please note : errors and omissions excepted.





**Roller Chain
British Standard
TRIPLEX
To DIN8187
(ISO 606-1982 & SMS 1613)**



Product Code	ISO DIN Code	Pitch (p)		b1 min	b2 max	d3 max	d1	h max	k	e	W3 max	Break load		Weight kg/m
		mm	inch									DIN kN min	W kN median	
05B-3	05B-3	8	-	3	4.77	5	2.31	7.1	3.1	19.9	5.64	10.2	11	0.54
06B-3	06B-3*	9.525	3/8	5.72	8.53	6.35	3.28	8.2	3.3	34	10.24	23.6	23.7	1.18
**08B-3	08B-3	12.7	1/2	7.75	11.3	8.51	4.45	11.8	3.9	44.9	13.92	47.5	57.5	2.01
**10B-3	10B-3	15.875	5/8	9.65	13.28	10.16	5.08	14.7	4.1	52.8	16.59	66.7	82	2.7
**12B-3	12B-3	19.05	3/4	11.68	15.62	12.07	5.72	16.1	4.6	61.7	19.46	86.7	96.5	3.12
**16B-3	16B-3	25.4	1	17.02	25.4	15.88	8.28	21	5.4	99.9	31.88	160	231	7.5
20B-3	20B-3	31.75	1 1/4	19.56	29	19.05	10.19	26.4	6.1	116	36.45	250	315	10.6
24B-3	24B-3	38.1	1 1/2	25.4	37.9	25.4	14.63	33.4	6.6	150	48.36	425	520	20
28B-3	28B-3	44.45	1 3/4	30.99	46.5	27.94	15.9	37	7.4	184	59.56	530	640	25
32B-3	32B-3	50.8	2	30.99	45.5	29.21	17.81	42.2	7.9	184	58.55	670	800	32
40B-3	40B-3	63.5	2 1/2	38.1	55.7	39.37	22.89	52.9	10	227	72.29	950	1140	48.7
48B-3	48B-3	76.2	3	45.72	70.5	48.26	29.24	63.8	10	281	91.21	1500	1700	75

All dimensions in mm unless stated
 * with straight side plates
 Zinc or nickel plated chains on request
 (only 80% of the breaking load of standard chain)
 **Copperhead Easy Break chain as standard
 Please note : errors and omissions excepted.

