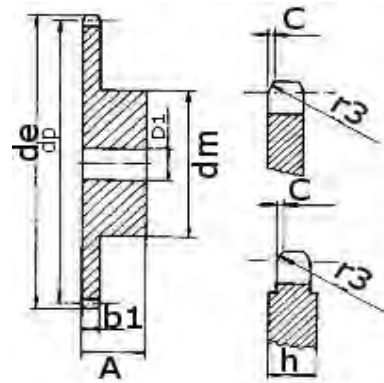




**Sprockets British Standard  
6mm x 2.8mm (041-1)  
Steel with hub**



No. Teeth	Outside Dia. de	Pitch Dia. dp	dm	D1	A
8	18	15.67	9.8	5	10
9	19.9	17.54	11.5	5	10
10	21.7	19.42	13	6	10
11	23.6	21.3	14	6	10
12	25.4	23.18	16	6	10
13	27.3	25.05	18	8	10
14	29.2	26.96	20	8	10
15	31	28.86	20	8	10
16	33	30.76	20	8	13
17	35	32.65	20	8	13
18	36.9	34.55	20	8	13
19	38.8	36.44	20	8	13
20	40.7	38.34	20	8	13
21	42.6	40.25	25	8	13
22	44.5	42.16	25	8	13
23	46.4	44.06	25	8	13
24	48.3	45.96	25	8	13
25	50.2	47.87	25	8	13
26	52.1	49.76	30	8	15
27	54	51.67	30	8	15
28	55.9	53.58	30	8	15
29	57.8	55.5	30	8	15
30	59.8	57.42	30	8	15
31	61.7	59.31	30	8	15
32	63.6	61.21	30	8	15
33	65.5	63.11	30	8	15
34	67.4	65.02	30	8	15
35	69.3	66.93	30	8	15
36	71.2	68.84	30	8	15
37	73.1	70.75	30	8	15
38	75	72.66	30	8	15
39	76.9	74.57	30	8	15
40	78.9	76.47	30	8	15
45	88.5	86.01	40	10	16
50	98	95.55	50	12	20
57	111.4	108.93	50	12	20
76	147.6	145.19	60	12	20

for 57 and 76 teeth  
dimension 'h' = 4mm

Tooth Radius  $r_3 = 6$

Radius size C = 0.7

Tooth width  $B_1 = 2.6$

All dimensions in mm

Intermediate sizes & special sprockets to drawing up to 1000mm diameter

Standard : to DIN 8187 ISO/R 606

Please note : All dimensions including bore sizes subject to change.

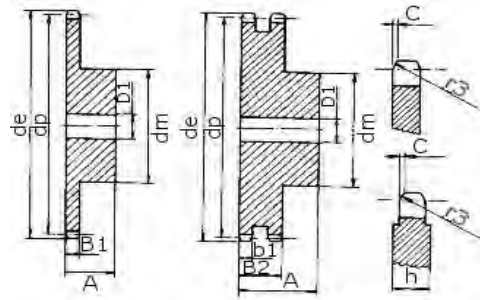
If a dimension is critical to your application please contact our sales department for confirmation.

For special sprockets or reworked sprockets please contact our sales department.

Please note : errors and omissions excepted



**Sprockets British Standard  
8mm x 3mm (05B)  
Steel with hub**



No. Teeth	Outside Dia. de	Pitch Dia. dp	Simplex			Duplex		
			dm	D <sub>1</sub>	A	dm	D <sub>1</sub>	A
8	24	20.9	13	6	12	12	8	18
9	26.6	23.39	15	6	12	15	8	18
10	29.2	25.89	17	8	12	17	8	18
11	31.7	28.39	18	8	13	19	10	18
12	34.2	30.91	20	8	13	21	10	18
13	36.7	33.42	23	8	13	24	10	18
14	39.2	35.95	25	8	13	26	10	18
15	41.7	38.48	28	8	13	29	10	18
16	44.3	41.01	30	8	14	32	10	20
17	46.8	43.53	30	8	14	34	10	20
18	49.3	46.07	30	8	14	37	10	20
19	51.9	48.61	30	8	14	39	10	20
20	54.4	51.14	30	8	14	40	10	20
21	57	53.68	35	8	14	40	10	20
22	59.5	56.21	35	8	14	40	10	20
23	62	58.75	35	8	14	40	10	20
24	64.6	61.29	35	8	14	40	10	20
25	67.5	63.83	35	8	14	40	10	20
28	69.5	66.37	40	10	16	50	12	22
27	72.2	68.91	40	10	16	50	12	22
28	74.8	71.45	40	10	16	50	12	22
29	77.3	73.99	40	10	16	50	12	22
30	79.8	76.53	40	10	16	50	12	22
31	82.4	79.08	40	10	16	60	12	22
32	84.9	81.61	40	10	16	60	12	22
33	87.5	84.16	40	10	16	60	12	22
34	90	86.7	40	10	16	60	12	22
35	92.5	89.25	40	10	16	60	12	22
36	95	91.79	40	10	16	60	12	22
37	97.6	94.33	40	10	16	60	12	22
38	100.2	96.88	40	10	16	60	12	22
39	102.7	99.42	40	10	16	60	12	22
40	105.3	101.97	40	10	16	60	12	22
45	118	114.69	60	12	20	-	-	-
50	130.7	127.41	60	12	20	-	-	-
57	148.6	145.22	80	14	20	-	-	-
76	197.7	193.59	80	20	25	-	-	-

for 57 and 76 teeth  
dimension 'h' = 4mm

Tooth Radius r<sub>3</sub> = 8

Radius size C = 1.0

Tooth width B<sub>1</sub> = 2.8

Tooth width b<sub>1</sub> = 2.7

Tooth width B<sub>2</sub> = 8.3

All dimensions in mm

Intermediate sizes & special sprockets to drawing up to 1000mm diameter

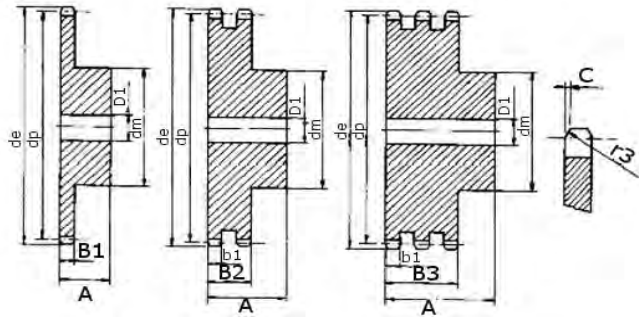
Standard : to DIN 8187 ISO/R 606

Please note : All dimensions including bore sizes subject to change.

If a dimension is critical to your application please contact our sales department for confirmation.

For special sprockets or reworked sprockets please contact our sales department.

Please note : errors and omissions excepted



**Sprockets British Standard  
3/8" x 7/32" (06B)  
Steel with hub**

No. Teeth	Outside Dia. de	Pitch Dia. dp	Simplex			Duplex			Triplex		
			dm	D1	A	dm	D1	A	dm	D1	A
8	28	24.89	15	6	22	15	6	22	15	6	32
9	31	27.85	18	8	22	18	8	22	18	8	32
10	34	30.82	20	8	22	20	8	22	20	10	32
11	37	33.8	22	8	25	22	10	25	22	10	35
12	40	36.8	25	8	25	25	10	25	25	10	35
13	43	39.79	28	10	25	28	10	25	28	10	35
14	46.3	42.8	31	10	25	31	10	25	31	12	35
15	49.3	45.81	34	10	25	34	10	25	34	12	35
16	52.3	48.82	37	10	28	37	12	30	37	12	35
17	55.3	51.83	40	10	28	40	12	30	40	12	35
18	58.3	54.85	43	10	28	43	12	30	43	12	35
19	61.3	57.87	45	10	28	46	12	30	46	12	35
20	64.3	60.89	46	10	28	49	12	30	49	12	35
21	68	63.91	48	12	28	52	12	30	52	14	40
22	71	66.93	50	12	28	55	12	30	55	14	40
23	73.5	69.95	52	12	28	58	12	30	58	14	40
24	77	72.97	54	12	28	61	12	30	61	14	40
25	80	76	57	12	28	64	12	30	64	14	40
26	83	79.02	60	12	28	67	12	30	67	14	40
27	86	82.05	60	12	28	70	12	30	70	14	40
28	89	85.07	60	12	28	73	12	30	73	14	40
29	92	88.09	60	12	28	76	12	30	76	14	40
30	94.7	91.12	60	12	30	79	12	30	79	14	40
31	98.3	94.15	65	14	30	80	16	30	80	16	40
32	101.3	97.17	65	14	30	80	16	30	80	16	40
33	104.3	100.2	65	14	30	80	16	30	80	16	40
34	107.3	103.23	65	14	30	80	16	30	85	16	40
35	110.4	106.26	65	14	30	80	16	30	85	16	40
36	113.4	109.29	70	16	30	90	16	30	90	16	40
37	116.4	112.32	70	16	30	90	16	30	90	16	40
38	119.5	115.35	70	16	30	90	16	30	90	16	40
39	122.5	118.37	70	16	30	90	16	30	90	16	40
40	125.5	121.4	70	16	30	90	16	30	90	16	40
50	155.7	151.69	70	16	30	-	-	-	-	-	-
57	176.9	172.91	70	16	30	80	16	30	-	-	-
76	234.9	230.49	80	20	30	-	-	-	-	-	-

Tooth Radius  $r_3 = 10$   
 Radius size C = 1.0  
 Tooth width  $B_1 = 5.3$   
 Tooth width  $b_1 = 5.2$   
 Tooth width  $B_2 = 15.4$   
 Tooth width  $B_3 = 25.6$

All dimensions in mm

Intermediate sizes & special sprockets to drawing up to 1000mm diameter

Standard : to DIN 8187 ISO/R 606

Please note : All dimensions including bore sizes subject to change.

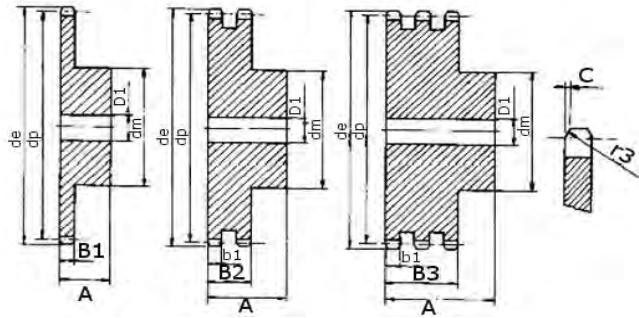
If a dimension is critical to your application please contact our sales department for confirmation.

For special sprockets or reworked sprockets please contact our sales department.

Please note : errors and omissions excepted



**Sprockets British Standard  
1/2" x 5/16" (08B)  
Steel with hub**



No. Teeth	Outside Dia. de	Pitch Dia. dp	Simplex			Duplex			Triplex		
			dm	D1	A	dm	D1	A	dm	D1	A
8	37.2	33.18	20	10	25	20	10	32	20	10	46
9	41	37.13	24	10	25	24	10	32	24	12	46
10	45.2	41.1	26	10	25	28	10	32	28	12	46
11	48.7	45.07	29	10	25	32	12	35	32	14	50
12	53	49.07	33	10	28	35	12	35	35	14	50
13	57.4	53.06	37	10	28	38	12	35	38	14	50
14	61.8	57.07	41	10	28	42	12	35	42	14	50
15	65.5	61.09	45	10	28	46	12	35	46	14	50
16	69.5	65.1	50	12	28	50	14	35	50	16	50
17	73.6	69.11	52	12	28	54	14	35	54	16	50
18	77.8	73.14	56	12	28	58	14	35	58	16	50
19	81.7	77.16	60	12	28	62	14	35	62	16	50
20	85.8	81.19	64	12	28	66	14	35	66	16	50
21	89.7	85.22	68	12	28	70	16	40	70	20	55
22	93.8	89.24	70	12	28	70	16	40	70	20	55
23	98.2	93.27	70	14	28	70	16	40	70	20	55
24	101.8	97.29	70	14	28	75	16	40	75	20	55
25	105.8	101.33	70	14	28	80	16	40	80	20	55
26	110	105.36	70	16	30	85	20	40	85	20	55
27	114	109.4	70	16	30	85	20	40	85	20	55
28	118	113.42	70	16	30	90	20	40	90	20	55
29	122	117.46	80	16	30	95	20	40	95	20	55
30	126.1	121.5	80	16	30	100	20	40	100	20	55
31	130.2	125.54	90	16	30	100	20	40	110	20	55
32	134.3	129.56	90	16	30	100	20	40	110	20	55
33	138.4	133.6	90	16	30	100	20	40	110	20	55
34	142.6	137.64	90	16	30	100	20	40	110	20	55
35	146.7	141.68	90	16	30	100	20	40	110	20	55
36	151	145.72	90	16	35	110	20	40	120	25	55
37	154.6	149.76	90	16	35	110	20	40	120	25	55
38	158.6	153.8	90	16	35	110	20	40	120	25	55
39	162.7	157.83	90	16	35	110	20	40	120	25	55
40	166.8	161.87	90	16	35	110	20	40	120	25	55
45	140.7	136.55	70	19	35	-	-	-	-	-	-
57	176.9	172.91	-	-	-	70	19	40	-	-	-
60	248.6	242.66	70	19	35	-	-	-	-	-	-
64	265.1	258.82	70	19	35	-	-	-	-	-	-

Tooth Radius r3 = 13  
 Radius size C = 1.3  
 Tooth width B1 = 7.2  
 Tooth width b1 = 7.0  
 Tooth width B2 = 21.0  
 Tooth width B3 = 34.9

All dimensions in mm

Intermediate sizes & special sprockets to drawing up to 1000mm diameter

Standard : to DIN 8187 ISO/R 606

Please note : All dimensions including bore sizes subject to change.

If a dimension is critical to your application please contact our sales department for confirmation.

For special sprockets or reworked sprockets please contact our sales department.

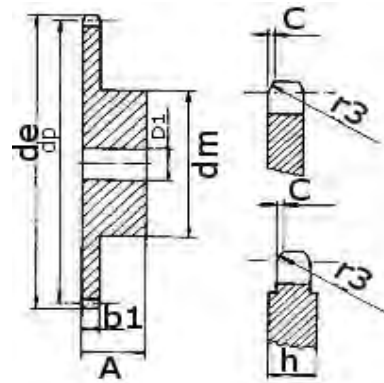
Please note : errors and omissions excepted



## Sprockets British Standard

### 1/2" x 1/8" (081-1)

### Steel with hub



No. Teeth	Outside Diam. de	Pitch Dia. dp	Boss Dia. dm	D1	Overall Width
8	37.2	33.18	21	8	14
9	41.5	37.13	25	8	14
10	46.2	41.1	28	8	14
11	49.6	45.07	31	8	16
12	53.9	49.07	35	8	16
13	58.4	53.06	39	8	16
14	62.8	57.07	43	8	16
15	66.8	61.09	47	8	16
16	70.9	65.1	50	10	18
17	74.9	69.11	50	10	18
18	78.9	73.14	50	10	18
19	82.9	77.16	50	10	18
20	86.9	81.19	50	10	18
21	91	85.22	60	12	20
22	95	89.24	60	12	20
23	99	93.27	60	12	20
24	103	97.29	60	12	20
25	107.1	101.33	60	12	20
26	111.2	105.36	70	16	20
27	115.4	109.4	70	16	20
28	119.4	113.42	70	16	20
29	123.4	117.46	70	16	20
30	127.5	121.5	70	16	20
31	131.5	125.54	70	16	20
32	135.5	129.56	70	16	20
33	139.6	133.6	70	16	20
34	143.6	137.64	70	16	20
35	147.6	141.68	70	16	20
36	151.7	145.72	70	16	25
37	155.7	149.76	70	16	25
38	159.8	153.8	70	16	25
39	163.8	157.83	70	16	25
40	167.8	161.87	70	16	25

from 31 teeth dimension  
h = 5mm

Tooth Radius  $r_3 = 13$

Radius size C = 1.0

Tooth width  $b_1 = 3.0$

All dimensions in mm

Intermediate sizes & special sprockets to drawing up to 1000mm diameter

Standard : to DIN 8187 ISO/R 606

Please note : All dimensions including bore sizes subject to change.

If a dimension is critical to your application please contact our sales department for confirmation.

For special sprockets or reworked sprockets please contact our sales department.

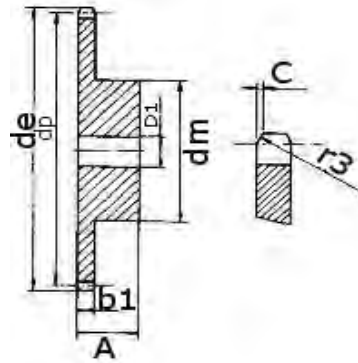
Please note : errors and omissions excepted



## Sprockets British Standard

### 1/2" x 3/16"

### Steel with hub



No. Teeth	Outside Dia. de	Pitch Dia. dp	Boss Dia. dm	D1	Overall Width
8	38.5	33.18	21	8	14
9	41.5	37.13	25	8	14
10	46.2	41.1	28	8	14
11	49.6	45.07	31	8	16
12	53.9	49.07	35	8	16
13	58.4	53.06	39	8	16
14	62.8	57.07	43	8	16
15	66.8	61.09	47	8	16
16	70.9	65.1	50	10	18
17	74.9	69.11	50	10	18
18	78.9	73.14	50	10	18
19	82.9	77.16	50	10	18
20	88.9	81.19	50	10	18
21	91	85.22	60	12	20
22	95	89.24	60	12	20
23	99	93.27	60	12	20
24	103	97.29	60	12	20
25	107.1	101.33	60	12	20
26	111.2	105.36	70	16	20
27	115.4	109.4	70	16	20
28	119.4	113.42	70	16	20
29	123.4	117.46	70	16	20
30	127.5	121.5	70	16	20
31	131.5	125.54	70	16	20
32	135.5	129.56	70	16	20
33	139.6	133.6	70	16	20
34	143.6	137.64	70	16	20
35	147.6	141.68	70	16	20
36	151.7	145.72	70	16	25
37	155.7	149.76	70	16	25
38	159.8	153.8	70	16	25
39	163.8	157.83	70	16	25
40	167.8	161.87	70	16	25

Tooth Radius  $r_3 = 13$

Radius size C = 1.3

Tooth width  $b_1 = 4.5$

All dimensions in mm

Intermediate sizes & special sprockets to drawing up to 1000mm diameter

Standard : to DIN 8187 ISO/R 606

Please note : All dimensions including bore sizes subject to change.

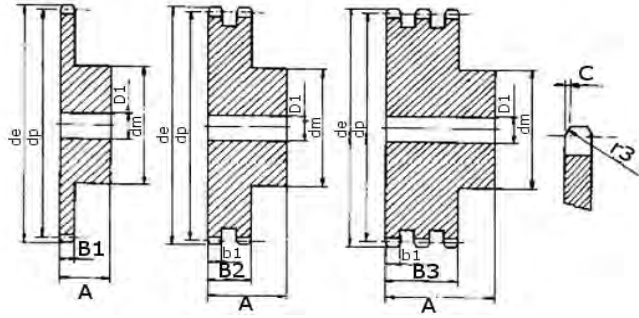
If a dimension is critical to your application please contact our sales department for confirmation.

For special sprockets or reworked sprockets please contact our sales department.

Please note : errors and omissions excepted



**Sprockets British Standard  
5/8" x 3/8" (10B)  
Steel with hub**



No. Teeth	Outside Dia. de	Pitch Dia. dp	Simplex			Duplex			Triplex		
			dm	D1	A	dm	D1	A	dm	D1	A
8	47	41.48	25	10	25	25	12	40	25	12	55
9	52.6	46.42	30	10	25	30	12	40	30	12	55
10	57.5	51.37	35	10	25	35	12	40	35	16	55
11	63	56.34	37	12	30	39	14	40	39	16	55
12	68	61.34	42	12	30	44	14	40	44	16	55
13	73	66.32	47	12	30	49	14	40	49	16	55
14	78	71.34	52	12	30	54	14	40	54	16	55
15	83	76.36	57	12	30	59	14	40	59	16	55
16	88	81.37	60	12	30	64	16	45	64	16	60
17	93	86.39	60	12	30	69	16	45	69	16	60
18	98.3	91.42	70	14	30	74	16	45	74	16	60
19	103.3	96.45	70	14	30	79	16	45	79	16	60
20	108.4	101.49	75	14	30	84	16	45	84	16	60
21	113.4	106.52	75	16	30	85	16	45	85	20	60
22	118	111.55	80	16	30	90	16	45	90	20	60
23	123.4	116.58	80	16	30	95	16	45	95	20	60
24	128.3	121.62	80	16	30	100	16	45	100	20	60
25	134	126.66	80	16	30	105	16	45	105	20	60
26	139	131.7	85	20	35	110	20	45	110	20	60
27	144	136.75	85	20	35	110	20	45	110	20	60
28	148.7	141.78	90	20	35	115	20	45	115	20	60
29	153.8	146.83	90	20	35	115	20	45	115	20	60
30	158.8	151.87	90	20	35	120	20	45	120	20	60
31	163.9	156.92	95	20	35	120	20	45	120	20	60
32	168.9	161.95	95	20	35	120	20	45	120	20	60
33	174.5	167	95	20	35	120	20	45	120	20	60
34	179	172.05	95	20	35	120	20	45	120	20	60
35	184.1	177.1	95	20	35	120	20	45	120	20	60
36	189.1	182.15	100	20	35	120	20	45	120	25	60
37	194.2	187.2	100	20	35	120	20	45	120	25	60
38	199.2	192.24	100	20	35	120	20	45	120	25	60
39	204.2	197.29	100	20	35	120	20	45	120	25	60
40	209.3	202.34	100	20	35	120	20	45	120	25	60
57	296	288.18	-	-	-	100	29	45	-	-	-
60	310.8	303.32	90	23	35	-	-	-	-	-	-

Tooth Radius  $r_3 = 16$   
 Radius size C = 1.6  
 Tooth width  $B_1 = 9.1$   
 Tooth width  $b_1 = 9.0$   
 Tooth width  $B_2 = 25.5$   
 Tooth width  $B_3 = 42.1$

All dimensions in mm

Intermediate sizes & special sprockets to drawing up to 1000mm diameter

Standard : to DIN 8187 ISO/R 606

Please note : All dimensions including bore sizes subject to change.

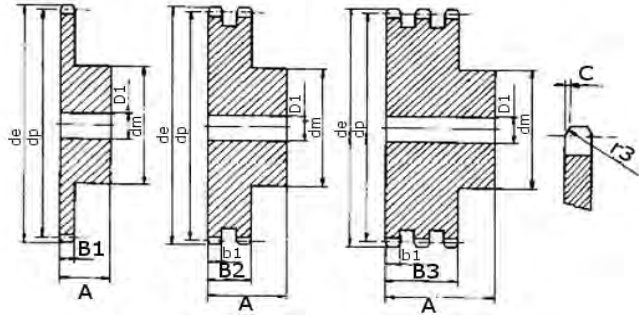
If a dimension is critical to your application please contact our sales department for confirmation.

For special sprockets or reworked sprockets please contact our sales department.

Please note : errors and omissions excepted



**Sprockets British Standard  
3/4" x 7/16" (12B)  
Steel with hub**



No. Teeth	Outside Dia. de	Pitch Dia. dp	Simplex			Duplex			Triplex		
			dm	D1	A	dm	D1	A	dm	D1	A
8	57.6	49.78	31	12	30	31	12	45	31	16	65
9	62	55.7	37	12	30	37	12	45	37	16	65
10	69	61.64	42	12	30	42	12	45	42	16	65
11	75	67.61	46	14	35	47	16	50	47	20	70
12	81.5	73.61	52	14	35	53	16	50	53	20	70
13	87.5	79.59	58	14	35	59	16	50	59	20	70
14	93.6	85.61	64	14	35	65	16	50	65	20	70
15	99.8	91.63	70	14	35	71	16	50	71	20	70
16	105.5	97.65	75	16	35	77	20	50	77	20	70
17	111.5	103.67	80	16	35	83	20	50	83	20	70
18	118	109.71	80	16	35	89	20	50	89	20	70
19	124.2	115.75	80	16	35	95	20	50	95	20	70
20	129.7	121.78	80	16	35	100	20	50	100	20	70
21	136	127.82	90	20	40	100	20	50	100	20	70
22	141.8	133.86	90	20	40	100	20	50	100	20	70
23	149	139.9	90	20	40	110	20	50	110	20	70
24	153.9	145.94	90	20	40	110	20	50	110	20	70
25	160	152	90	20	40	120	20	50	120	20	70
26	165.9	158.04	95	20	40	120	20	50	120	20	70
27	172.3	164.09	95	20	40	120	20	50	120	20	70
28	178	170.13	95	20	40	120	20	50	120	20	70
29	184.1	176.19	95	20	40	120	20	50	120	20	70
30	190.5	182.25	95	20	40	120	20	50	120	20	70
31	196.3	188.31	100	20	40	130	20	50	130	25	70
32	203.3	194.35	100	20	40	130	20	50	130	25	70
33	209.3	200.4	100	20	40	130	20	50	130	25	70
34	214.6	206.46	100	20	40	130	20	50	130	25	70
35	221	212.52	100	20	40	130	20	50	130	25	70
36	226.8	218.58	100	20	40	130	25	50	130	25	70
37	232.9	224.64	100	20	40	130	25	50	130	25	70
38	239	230.69	100	20	40	130	25	50	130	25	70
39	245.1	236.75	100	20	40	130	25	50	130	25	70
40	251.3	242.81	100	20	40	130	25	50	130	25	70
57	354	345.81	100	29	40	120	29	50	-	-	-

Tooth Radius  $r_3 = 19$   
 Radius size C = 2  
 Tooth width  $B_1 = 11.1$   
 Tooth width  $b_1 = 10.8$   
 Tooth width  $B_2 = 30.3$   
 Tooth width  $B_3 = 49.8$

All dimensions in mm

Intermediate sizes & special sprockets to drawing up to 1000mm diameter

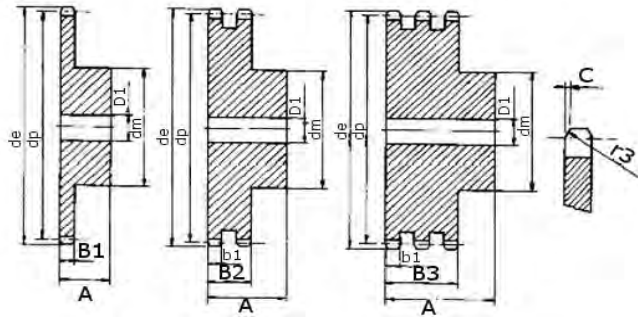
Standard : to DIN 8187 ISO/R 606

Please note : All dimensions including bore sizes subject to change.

If a dimension is critical to your application please contact our sales department for confirmation.

For special sprockets or reworked sprockets please contact our sales department.

Please note : errors and omissions excepted



**Sprockets British Standard**

**1" x 17.02mm (16B)**

**Steel with hub**

No. Teeth	Outside Dia. de	Pitch Dia. dp	Simplex			Duplex			Triplex		
			dm	D1	A	dm	D1	A	dm	D1	A
8	77	66.37	42	16	35	42	16	65	42	20	95
9	85	74.27	50	16	35	50	16	65	50	20	95
10	93	82.19	55	16	35	56	16	65	56	20	95
11	99.5	90.14	61	16	40	64	20	70	64	25	100
12	109	98.14	69	16	40	72	20	70	72	25	100
13	117	106.12	78	16	40	80	20	70	80	25	100
14	125	114.15	84	16	40	88	20	70	88	25	100
15	133	122.17	92	16	40	96	20	70	96	25	100
16	141	130.2	100	20	45	104	20	70	104	30	100
17	149	138.22	100	20	45	112	20	70	112	30	100
18	157	146.28	100	20	45	120	20	70	120	30	100
19	165.2	154.33	100	20	45	128	20	70	128	30	100
20	173.2	162.38	100	20	45	130	20	70	130	30	100
21	181.2	170.43	110	20	50	130	25	70	130	30	100
22	189.3	178.48	110	20	50	130	25	70	130	30	100
23	197.5	186.53	110	20	50	130	25	70	130	30	100
24	205.5	194.59	110	20	50	130	25	70	130	30	100
25	213.5	202.66	110	20	50	130	25	70	130	30	100
26	221.6	210.72	120	20	50	130	25	70	130	30	100
27	229.6	218.79	120	20	50	130	25	70	130	30	100
28	237.7	226.85	120	20	50	130	25	70	130	30	100
29	245.8	234.92	120	20	50	130	25	70	130	30	100
30	254	243	120	20	50	130	25	70	130	30	100
31	262	251.08	120	25	50	140	25	70	140	30	100
32	270	259.13	120	25	50	140	25	70	140	30	100
33	278.5	267.21	120	25	50	140	25	70	140	30	100
34	287	275.28	120	25	50	140	25	70	140	30	100
35	296.2	283.36	120	25	50	140	25	70	140	30	100
36	304.6	291.44	120	25	50	140	25	70	140	30	100
37	312.6	299.51	120	25	50	140	25	70	140	30	100
38	320.7	307.59	120	25	50	140	25	70	140	30	100
39	328.8	315.67	120	25	50	140	25	70	140	30	100
40	336.9	323.75	120	25	50	140	25	70	140	30	100

Tooth Radius  $r_3 = 26$   
 Radius size  $C = 2.5$   
 Tooth width  $B_1 = 16.2$   
 Tooth width  $b_1 = 15.8$   
 Tooth width  $B_2 = 47.7$   
 Tooth width  $B_3 = 79.6$

All dimensions in mm

Intermediate sizes & special sprockets to drawing up to 1000mm diameter

Standard : to DIN 8187 ISO/R 606

Please note : All dimensions including bore sizes subject to change.

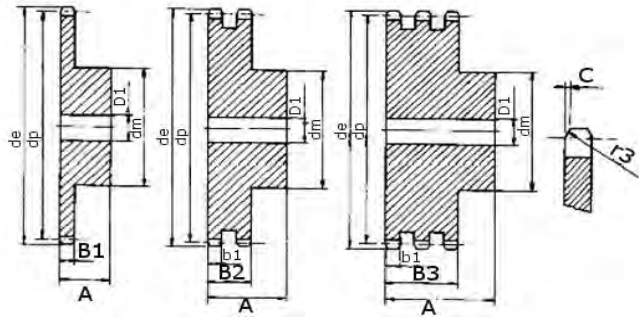
If a dimension is critical to your application please contact our sales department for confirmation.

For special sprockets or reworked sprockets please contact our sales department.

Please note : errors and omissions excepted



**Sprockets British Standard  
1 1/4" x 3/4" (20B)  
Steel with hub**



No. Teeth	Outside Dia. de	Pitch Dia. dp	Simplex			Duplex			Triplex		
			dm	D1	A	dm	D1	A	dm	D1	A
8	98.1	82.96	53	20	40	53	20	75	53	20	110
9	108	92.84	63	20	40	63	20	75	63	20	110
10	117.9	102.74	70	20	40	70	20	75	70	20	110
11	127.8	112.68	77	20	45	80	20	80	80	20	115
12	137.8	122.68	88	20	45	90	20	80	90	20	115
13	147.8	132.65	98	20	45	100	20	80	100	20	115
14	157.8	142.68	108	20	45	110	20	80	110	20	115
15	167.9	152.72	118	20	45	120	20	80	120	20	115
16	177.9	162.75	120	25	50	120	25	80	120	25	115
17	187.9	172.78	120	25	50	120	25	80	120	25	115
18	198	182.85	120	25	50	120	25	80	120	25	115
19	208.1	192.91	120	25	50	120	25	80	120	25	115
20	218.1	202.98	120	25	50	120	25	80	120	25	115
21	228.2	213.04	140	25	55	140	25	80	140	25	115
22	238.3	223.11	140	25	55	140	25	80	140	25	115
23	248.3	233.17	140	25	55	140	25	80	140	25	115
24	258.4	243.23	140	25	55	140	25	80	140	25	115
25	268.5	253.33	140	25	55	140	25	80	140	25	115
26	278.6	263.4	150	25	55	150	25	80	150	25	115
27	288.6	273.49	150	25	55	150	25	80	150	25	115
28	298.7	283.56	150	25	55	150	25	80	150	25	115
29	308.8	293.65	150	25	55	150	25	80	150	25	115
30	318.9	303.75	150	25	55	150	25	80	150	25	115
31	329	313.85	160	25	55	150	25	80	150	30	115
32	339.1	323.91	160	25	55	150	25	80	150	30	115
33	349.2	334.01	160	25	55	150	25	80	150	30	115
34	359.3	344.1	160	25	55	150	25	80	150	30	115
35	369.4	354.2	160	25	55	150	25	80	150	30	115
36	379.5	364.3	160	25	55	150	30	80	150	30	115
37	389.5	374.39	160	25	55	150	30	80	150	30	115
38	399.6	384.49	160	25	55	150	30	80	150	30	115
39	409.7	394.59	160	25	55	150	30	80	150	30	115
40	419.8	404.69	160	25	55	150	30	80	150	30	115

Tooth Radius r3 = 32  
 Radius size C = 3.5  
 Tooth width B1 = 18.5  
 Tooth width b1 = 18.2  
 Tooth width B2 = 54.6  
 Tooth width B3 = 91

All dimensions in mm

Intermediate sizes & special sprockets to drawing up to 1000mm diameter

Standard : to DIN 8187 ISO/R 606

Please note : All dimensions including bore sizes subject to change.

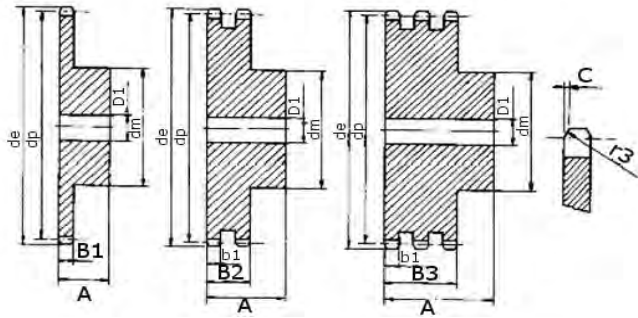
If a dimension is critical to your application please contact our sales department for confirmation.

For special sprockets or reworked sprockets please contact our sales department.

Please note : errors and omissions excepted



**Sprockets British Standard  
1 1/2" x 1" (24B)  
Steel with hub**



No. Teeth	Outside Dia. de	Pitch Dia. dp	Simplex			Duplex			Triplex		
			dm	D1	A	dm	D1	A	dm	D1	A
8	115	99.55	58	20	45	58	25	95	58	25	140
9	126.4	111.4	70	20	45	70	25	95	70	25	140
10	138	123.29	80	20	45	80	25	95	80	25	140
11	150	135.21	90	25	50	90	25	100	90	25	150
12	162	147.22	102	25	50	102	25	100	102	25	150
13	174.2	159.18	114	25	50	114	25	100	114	25	150
14	186.2	171.22	128	25	50	128	25	100	128	25	150
15	198.2	183.26	140	25	50	140	25	100	140	25	150
16	210.3	195.3	140	25	55	140	25	100	140	25	150
17	222.3	207.34	140	25	55	150	25	100	150	25	150
18	234.3	219.42	140	25	55	160	25	100	160	25	150
19	246.5	231.49	140	25	55	160	25	100	160	25	150
20	258.6	243.57	140	25	55	160	25	100	160	25	150
21	270.6	255.65	150	25	60	160	25	100	160	30	150
22	282.7	267.73	150	25	60	160	25	100	160	30	150
23	294.8	279.8	150	25	60	160	25	100	160	30	150
24	306.8	291.88	150	25	60	160	25	100	160	30	150
25	319	304	150	25	60	160	25	100	160	30	150
26	331	316.08	160	30	60	160	30	100	160	30	150
27	343.2	328.19	160	30	60	160	30	100	160	30	150
28	355.2	340.27	160	30	60	160	30	100	160	30	150
29	367.3	352.38	160	30	60	160	30	100	160	30	150
30	379.5	364.5	160	30	60	160	30	100	160	40	150
31	391.6	376.62	160	30	60	170	30	100	-	-	-
32	403.7	388.69	160	30	60	170	30	100	170	40	150
33	415.8	400.81	160	30	60	170	30	100	170	40	150
34	427.8	412.93	160	30	60	170	30	100	170	40	150
35	440	425.04	160	30	60	170	30	100	170	40	150
36	452	437.16	160	30	60	170	30	100	170	40	150
37	464.2	449.27	160	30	60	170	30	100	-	-	-
38	476.2	461.39	160	30	60	170	30	100	170	40	150
39	488.5	473.5	160	30	60	170	30	100	-	-	-
40	500.6	485.62	160	30	60	170	30	100	170	40	150

Tooth Radius  $r_3 = 38$   
 Radius size C = 4  
 Tooth width  $B_1 = 24.1$   
 Tooth width  $b_1 = 23.6$   
 Tooth width  $B_2 = 72$   
 Tooth width  $B_3 = 120.3$

All dimensions in mm

Intermediate sizes & special sprockets to drawing up to 1000mm diameter

Standard : to DIN 8187 ISO/R 606

Please note : All dimensions including bore sizes subject to change.

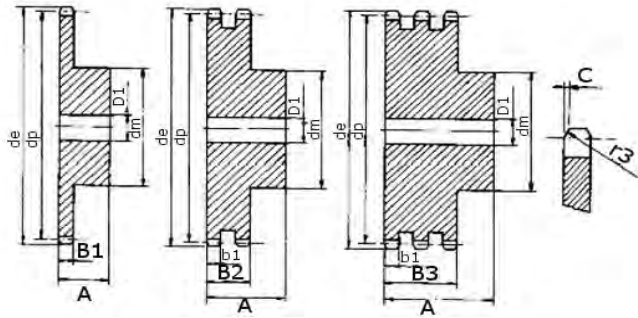
If a dimension is critical to your application please contact our sales department for confirmation.

For special sprockets or reworked sprockets please contact our sales department.

Please note : errors and omissions excepted



**Sprockets British Standard  
1 3/4" x 1 1/4" (28B)  
Steel with hub**



No. Teeth	Outside Dia. de	Pitch Dia. dp	Simplex			Duplex			Triplex		
			dm	D1	A	dm	D1	A	dm	D1	A
8	132	116.15	74	25	70	74	25	120	74	30	180
9	148.4	129.96	88	25	70	88	25	120	88	30	180
10	162.3	143.85	100	25	70	100	25	120	100	30	180
11	176.3	157.77	112	25	70	112	25	120	112	30	180
12	189.5	171.74	125	25	70	125	25	120	125	30	180
13	204.2	185.75	130	25	70	130	25	120	130	30	180
14	218.2	199.76	130	25	70	130	25	120	130	30	180
15	232.3	213.79	145	25	70	145	25	120	145	30	180
16	246.3	227.84	160	30	75	160	30	120	160	30	180
17	260	241.91	160	30	75	160	30	120	160	30	180
18	274	255.98	160	30	75	160	30	120	160	30	180
19	289	270.06	160	30	75	160	30	120	160	30	180
20	303	284.15	160	30	75	160	30	120	160	30	180
21	317	298.24	170	30	75	180	30	120	180	30	180
22	331	312.34	170	30	75	180	30	120	180	30	180
23	345	326.44	170	30	75	180	30	120	180	30	180
24	359	340.55	170	30	75	180	30	120	180	30	180
25	373	354.66	170	30	75	180	30	120	180	40	180
26	387	368.77	170	30	75	180	30	120	180	40	180
27	401.4	382.88	170	30	75	180	30	120	180	40	180
28	416	397	170	30	75	180	30	120	180	40	180
29	430	411.12	170	30	75	180	30	120	-	-	-
30	444	425.24	170	30	75	180	30	120	180	40	180
31	458	439.37	180	30	75	-	-	-	-	-	-
32	472	453.49	180	30	75	-	-	-	-	-	-
33	486	467.62	180	30	75	-	-	-	-	-	-
34	500	481.75	180	30	75	-	-	-	-	-	-
35	514	495.88	180	30	75	200	30	120	200	40	180
36	529	510.01	180	30	75	-	-	-	-	-	-
37	543	524.14	180	30	75	-	-	-	-	-	-
38	557	538.27	180	30	75	200	30	120	200	40	180
39	571	552.4	180	30	75	-	-	-	-	-	-
40	585	566.54	180	30	75	200	30	120	200	40	180

Tooth Radius  $r_3 = 44$

Radius size C = 5

Tooth width  $B_1 = 29.4$

Tooth width  $b_1 = 29.8$

Tooth width  $B_2 = 88.4$

Tooth width  $B_3 = 148$

All dimensions in mm

Intermediate sizes & special sprockets to drawing up to 1000mm diameter

Standard : to DIN 8187 ISO/R 606

Please note : All dimensions including bore sizes subject to change.

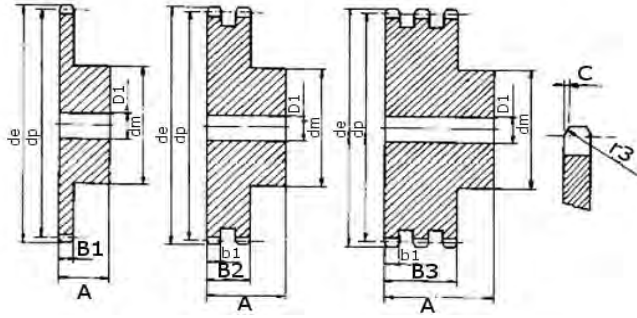
If a dimension is critical to your application please contact our sales department for confirmation.

For special sprockets or reworked sprockets please contact our sales department.

Please note : errors and omissions excepted



**Sprockets British Standard  
2" x 1 1/4" (32B)  
Steel with hub**



No. Teeth	Outside Dia. de	Pitch Dia. dp	Simplex			Duplex			Triplex		
			dm	D1	A	dm	D1	A	dm	D1	A
8	153.2	132.69	82	25	80	82	30	120	82	30	180
9	169	148.54	88	25	80	88	30	120	88	30	180
10	185	164.44	104	25	80	104	30	120	104	30	180
11	200.8	180.34	120	30	80	120	30	120	120	30	180
12	216.8	196.29	133	30	80	133	30	120	133	30	180
13	232.8	212.29	145	30	80	145	30	120	145	30	180
14	248.8	228.29	160	30	80	160	30	120	160	30	180
15	264.8	244.3	160	30	80	160	30	120	160	30	180
16	280.9	260.4	160	30	90	160	30	120	160	30	180
17	296.9	276.4	170	30	90	180	30	120	180	30	180
18	313	292.55	170	30	90	180	30	120	180	30	180
19	329.1	308.66	170	30	90	200	30	120	200	30	180
20	345.2	324.71	180	30	90	200	30	120	200	30	180
21	361.3	340.82	180	30	90	200	30	120	200	40	180
22	377.5	356.98	180	30	90	200	30	120	200	40	180
23	393.6	373.08	180	30	90	200	30	120	200	40	180
24	409.7	389.18	180	30	90	200	30	120	200	40	180
25	425.8	405.33	180	30	90	200	30	120	200	40	180
26	441.9	421.44	180	30	90	200	30	120	200	40	180
27	458.1	437.59	180	30	90	200	30	120	200	40	180
28	474.2	453.69	180	30	90	200	30	120	200	40	180
29	490.4	469.9	180	30	90	-	-	-	-	-	-
30	506.5	486	180	30	90	200	30	120	200	40	180
32	538.8	518.28	180	30	90	-	-	-	-	-	-
35	589.5	566.72	180	30	90	-	-	-	-	-	-
38	635.5	615.14	180	30	90	-	-	-	-	-	-
40	670.3	647.49	180	30	90	-	-	-	-	-	-

Tooth Radius  $r_3 = 51$

Radius size C = 5

Tooth width  $B_1 = 29.4$

Tooth width  $b_1 = 29.8$

Tooth width  $B_2 = 87.4$

Tooth width  $B_3 = 146$

All dimensions in mm

Intermediate sizes & special sprockets to drawing up to 1000mm diameter

Standard : to DIN 8187 ISO/R 606

Please note : All dimensions including bore sizes subject to change.

If a dimension is critical to your application please contact our sales department for confirmation.

For special sprockets or reworked sprockets please contact our sales department.

Please note : errors and omissions excepted