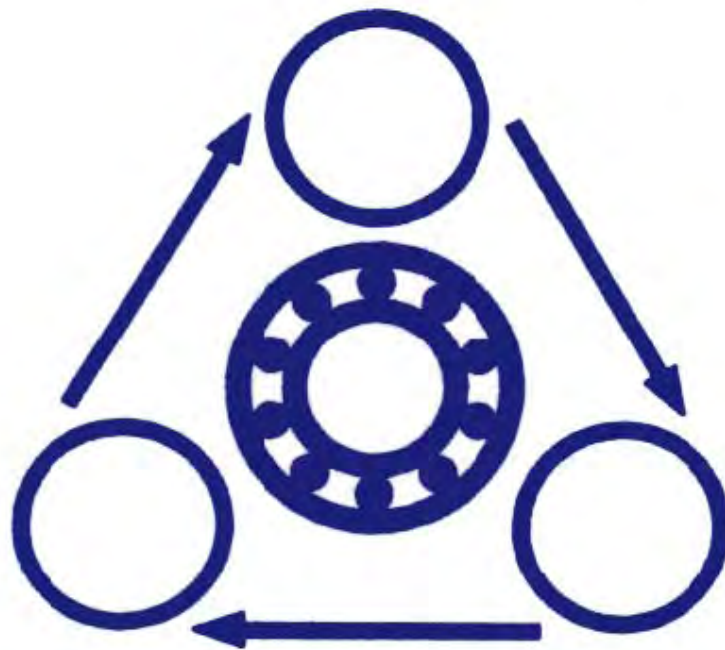


ASHLEY POWER LTD.
580-586 ASHLEY
ROAD
PARKSTONE
POOLE
DORSET, BH14 0AQ

ASHLEY POWER



WHEELS & FEET CATALOGUE



ASHLEY POWER



WHEELS, CASTORS & FEET





Wheels & Feet Contents

Guidance in specifying the right product.....	R4
Symbols, expanders & buffers.....	R6
Nylon wheels and standard duty zinc plated castors.....	R7
Nylon wheels and standard duty stainless steel castors.....	R8
Nylon wheels and standard duty single ball race zinc plated castors.....	R9
Small black plastic wheels and zinc plated castors.....	R11
Small grey rubber tyred (TPR) zinc plated castors.....	R12
Small grey rubber tyred (TPR) twin wheeled zinc plated castors.....	R13
Black rubber tyred plastic centre zinc plated castors.....	R14
Black rubber tyred steel centre zinc plated castors.....	R15
Black statically conductive rubber tyred wheels in zinc plated castors.....	R16
Black elastic rubber tyre aluminium centre ball bearing wheel in zinc plated Standard and medium duty castors.....	R17
Large black rubber tyre wheels with steel centres.....	R18
Injected polyurethane tyre on nylon centre wheel in zinc plated castors.....	R19
Injected polyurethane tyre on nylon centre wheel in stainless steel castors.....	R20
Cast polyurethane tyre on aluminium centre ball bearing wheel in zinc plated standard and medium duty castors.....	R21
Cast polyurethane tyre on cast iron centre ball bearing wheel in zinc plated standard and medium duty castors.....	R22
High temperature resin wheels in zinc plated and stainless steel castors.....	R23
Cast iron wheel in single ball race zinc plated castor.....	R24
Nylon and polyurethane rollers.....	R25
Pneumatic plastic and steel centre wheels in zinc plated castors.....	R26
Adjustable load feet.....	R28
Ball transfer units.....	R29
Twin wheel furniture castors.....	R30
Other products.....	R32

Please note: At Ashley Power we take care to ensure that all information is correct at time of printing however some errors and omissions excepted.



guidance in specifying the right product

These guidance notes are designed to help you make the right selection of product for your intended application. If you need any help in your selection or your requirements do not appear in this catalogue please do not hesitate to contact us and our technical staff will only be too pleased to assist.

The Castor Bracket Type

There are 5 main configurations of castor. They are SWIVEL TOP PLATE, FIXED TOP PLATE or RIGID (non-swivelling), SWIVEL TOP PLATE WITH BRAKE (usually total lock but can also be a wheel lock only), SWIVEL BOLT HOLE (swivel with round top plate and single fixing hole) and SWIVEL BOLT HOLE WITH BRAKE. The brackets either have a ZINC plated finish or are STAINLESS STEEL or can be FABRICATED WITH A PAINTED finish. Throughout the catalogue, unless otherwise stated ZINC is the standard bracket finish. If in doubt please contact our Sales Team.



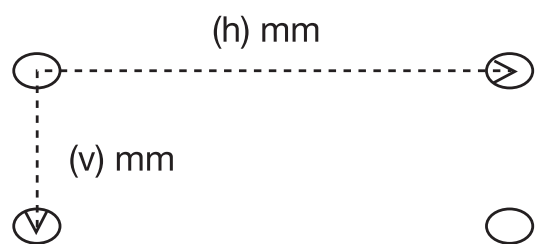
The Wheel

A wheel can be used in a castor bracket or can be mounted on its own axle.

Type of Fixing

Consideration must be given to the method by which you intend to mount the castor. The two most common methods are by a TOP PLATE fixing or a SINGLE BOLT HOLE fixing. Throughout the catalogue we have listed the relevant dimensions of each of these to enable you to decide which best suits your requirements. On top plate fixings measure distance from the centre of the bolt hole horizontally then vertically. On bolt hole castors the size of the bolt required to affix the castor to the frame.

Expanding stems and adaptors (solid and threaded stems) are often used when mounting into square or round tubing. In determining which is required please consider the shape of your tubing, the inner dimensions and the weight being carried. As a rule of thumb, expanding stems are recommended for lighter applications and adaptors are recommended for heavier applications. Please liaise with our Sales Team to determine the best solution if unsure.



The Wheel

The wheel diameter is one consideration not only to the overall height to be achieved but also the ease of how the castor will roll - the larger the diameter the easier it rolls and easier it will roll over an obstacle. The increase in diameter may also increase the load carrying capacity of the castor.

The tread material also needs to be considered depending on the floor conditions. Hard, rough or uneven floors will require a resilient tread (rubber, polyurethane, thermoplastic rubber etc). These types of treads are also quiet, absorb shock and will not damage flooring. Soft floors such as carpets need harder tyres such as nylon. Careful consideration must be given to these factors when selecting the tread material. If you need help please contact our Sales team.

The wheel bearing effects the rollability of the wheel. There are 4 types of wheel bearing available. They are PLAIN, ROLLER BEARING, BALL BEARING and TAPER ROLLER BEARING. The choice of bearing type effects the 'rollability' of a load at start up. Plain bearings are ideal for lighter loads and in wet environments. Ball and roller bearings offer excellent ease of rolling and give a long lasting performance. If you need help please contact our Sales Team.

Wheel only solutions - when choosing a wheel only solution there are 3 other critical dimensions to be considered. They are TREAD WIDTH, WHEEL HUB LENGTH and WHEEL BORE. These items are particularly important when replacing wheels in existing castor brackets.



guidance in specifying the right product continued

Load Capacity

To calculate carrying capacity, take the full load (including the trolley) and divide by 3; assuming that the number of wheels being used is 4. This will allow "practical" selection of the product (ground or trolley base can be uneven) to fulfil your requirements.

If you need any assistance please call our Sales Team who will be pleased to help

$$\frac{\text{Total operational load}}{3}$$

Other factors to consider

Speed. Most castors are designed for slow speed (less than 4km/hour) usage. For power towing applications and particularly where speeds may exceed 4km/hr it is necessary to use much heavier duty wheels and castors; often with a specification several times greater than the conditions appear to warrant. It is recommended that all power towing requirements are discussed with our Sales Team in order to ensure the appropriate product is selected.

Temperature - ambient and operating temperatures can have adverse effects on the performance and longevity of the castors. Please ensure that the wheels chosen will operate within the recommended temperatures.

If you need any assistance please call our Sales Team who will be pleased to help

Lubrication and Maintenance- the maintenance of a wheel or complete castor assembly is vital to maximise productivity of the product. The regreasing of axles and swivel bearing (in the swivel head) together with the tightening of the axle and / or any adjustable fitting will prolong the life cycle of all wheels and castors. Where cleaning agents are used it is not recommended to use those that contain corrosive or granular elements.

Operating environments- We have a chemical compatibility list that is an assist in determining suitability of castor materials in chemical environments. Consideration must also be given to the type of surface on which the castor will run (see tread material comment on previous page). If you would like a list of chemical compatibility or have any other query please contact our sales team.

Cycle times- Most castors are not designed to operate 24 hours per day at maximum carrying capacity so if there are regular cycle times over a shift and the castors are at the top end of their carrying capacity please speak with our Sales Team.

Castor Failure -

WHEELS AND CASTORS SHOULD NOT FAIL PREMATURELY

Where a product fails prematurely it is very rarely to do with the construction of or the materials used to make the wheel or castor. More often than not it is due to incorrect specification or "misuses" by the operators.

We have listed below the most common occurrences of failure. It is therefore important that these occurrences are considered as having a potential effect in selection of the correct product.

Overloading - is the carrying capacity of the castor is correct?

Unsuitable floor conditions - is the most suitable tread selected for the particular floor ?

Excessive temperature (hot or cold) - is the correct wheel type being used ?

Failure of the brake mechanism - is the unit being moved whilst the brake is on ?

Exposed to caustic elements - is the product suitable for the environment ?

Excessive shock loading - is the most suitable wheel and tread type being used ?

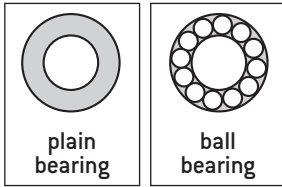
Excessive speeds - is the product being incorrectly used for power towing ?

Influence of lateral forces - is the unit being pushed sideways (Fixed and braked castors especially prone)

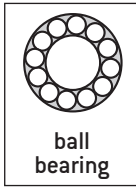
We have attempted to cover all of the elements that need to be considered in the selection of the right product for the job. The products included in this catalogue are only a selection of commonly used products in UK Industry. There are many other solutions available. If you cannot find the product that meets your requirements please contact us and we will only be too willing to help find your solution.



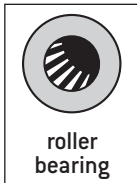
bearings



plain bearing



ball bearing



roller bearing

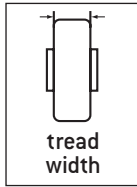


taper roller bearing

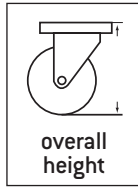
table symbols



wheel diameter



tread width



overall height

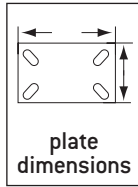
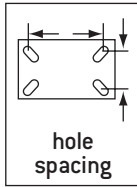
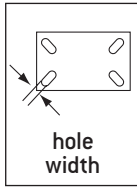


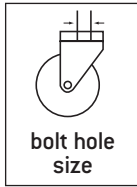
plate dimensions



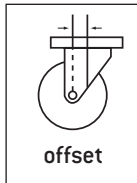
hole spacing



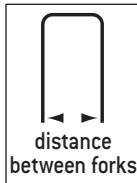
hole width



bolt hole size



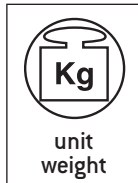
offset



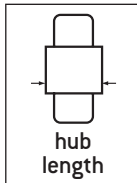
distance between forks



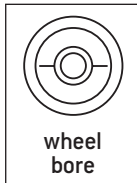
carrying capacity



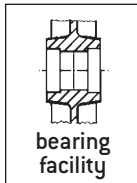
unit weight



hub length



wheel bore



bearing facility

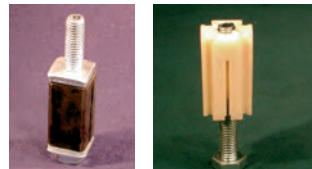
expanders

Expanders are for attaching bolt hole castors by gripping the inside of the round or square tube



round expanders for assembly with 10mm set screw

Internal tube size	Material	Part number
18.9 to 20.2mm	Steel	1284000
18.9 to 20.2mm	Rubber	1284300
18 to 20mm	Nylon	EXP19/20R
21.9 to 23.3mm	Steel	1284010
21.9 to 23.3mm	Rubber	1284080
21 to 23mm	Nylon	EXP21/23R
24.1 to 27.0mm	Aluminium	1284020
24.1 to 27.0mm	Rubber	1284310
24 to 27mm	Nylon	EXP24/27R
27.5 to 30.0mm	Aluminium	1284030
27.0 to 29.5mm	Rubber	1284320
28 to 31mm	Nylon	EXP28/31R



square expanders for assembly with 10mm set screw

Internal square section size	Material	Part number
15.6 to 17.2mm	Rubber	1284040
18.6 to 20.5mm	Rubber	1284050
18 to 20mm	Nylon	EXP18/20S
21.7 to 24.0mm	Rubber	1284060
21 to 23mm	Nylon	EXP21/23S
27.0 to 29.5mm	Rubber	1284070
28 to 31mm	Nylon	EXP28/31S

It is important not to over tighten expanders during assembly of castor to trolley.

We recommend the following torque (in decanewtons):
18 to 20mm 12. 21 to 23mm 12. 24 to 27mm 18. 28 to 31mm 20.

trolley buffers

This series offers buffers which are fitted to the vertical leg (whether round or square) of a trolley above the castor. Should the trolley come too close to a wall, the buffer comes in contact with the wall and turns as the trolley is pushed along the wall offering protection to both wall and trolley.

This type of the buffer is made from hard wearing foamed plastic which is a non marking material.



FOAMED PLASTIC BUFFER						
		round or square				code
114	30	R	0.05	25	1"	R1
114	30	S	0.05	25	1"	S1
114	30	S	0.05	25	32	S32
114	30	R	0.05	25	32	R32



NYLON

Wheel

- Natural colour polyamide 6 wheel
- Plain bore wheel
- Operating temperature -30°/+80°C

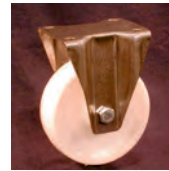


PLAIN BEARING WHEEL

80	33	130	0.19	40	12	NY8051
100	33	150	0.31	40	12	NY10051
125	37	200	0.54	50	15	NY12551
150	40	250	0.76	50	15	NY15051
160	45	300	1.07	60	20	NY16051
200	50	380	1.81	58	20	NY20051

Standard duty castors

- Rectangular top plate swivel, fixed and swivel with trailing wheel and swivel brake
- Zinc plated pressed steel
- Double ball race
- Operating temperature -30°/+80°C

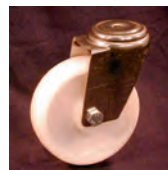


										SWIVEL TOP PLATE		FIXED TOP PLATE		SWIVEL TOP PLATE WITH BRAKE	
80	33	106	85x105	60x80	9	36	40	130	0.58	NY8051311	0.39	NY8050311	0.78	NY8052311	
100	33	128	85x105	60x80	9	36	40	150	0.65	NY10051311	0.46	NY10050311	0.85	NY10052311	
125	37	155	85x105	60x80	9	41	50	170	0.89	NY12551311	0.64	NY12550311	1.04	NY12552311	
125	37	159	110x140	80x105	9	41	60	170	1.10	NY12551312	1.44	NY12550312	1.30	NY12552312	
150	40	181	85x105	60x80	9	46	50	170	0.95	NY15051311	0.80	NY15050311	1.10	NY15052311	
160	45	195	110x140	80x105	11	49	60	300	1.80	NY16051311	1.50	NY16050311	2.10	NY16052311	
200	50	235	110x140	80x105	11	54	60	300	2.14	NY20051311	1.92	NY20050311	2.33	NY20052311	

OPTIONS

Standard duty castors

- Round top plate swivel and swivel with trailing wheel and swivel brake
- Zinc plated pressed steel
- Double ball race
- Operating temperature -30°/+80°C



										BOLT HOLE TOP PLATE		BOLT HOLE TOP PLATE WITH BRAKE	
80	33	106	12	36	40	130	0.52	NY8051411	0.70	NY8052411			
100	33	128	12	36	40	150	0.55	NY10051411	0.80	NY10052411			
125	37	155	12	41	50	150	0.85	NY12551411	0.99	NY12552411			
150	40	181	12	46	50	150	0.90	NY15051411	1.05	NY15052411			
160	45	195	16	49	60	250	1.60	NY16051411	1.90	NY16052411			
200	50	235	16	54	60	250	1.95	NY20051411	2.24	NY20052411			

- Roller bearing wheels
- Ball bearing wheels
- Solid and threaded stems
- threadguards



NYLON

Wheel

- Natural colour polyamide 6 wheel
- Plain bore wheel
- Operating temperature -30°/+80°C

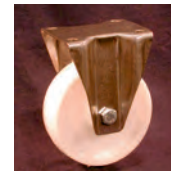


PLAIN BEARING WHEEL						
80	33	130	0.19	40	12	NY8051
100	33	150	0.31	40	12	NY10051
125	37	200	0.54	50	15	NY12551
150	40	250	0.76	50	15	NY15051
160	45	300	1.07	60	20	NY16051
200	50	380	1.81	58	20	NY20051

GhUbXUfX'Xi hm

GhUJb`Ygg'ghYY`WUghc f g`

- Rectangular top plate swivel, fixed and swivel with trailing wheel and swivel brake
- Stainless steel pressed steel
- Double ball race
- Operating temperature -30°/+80°C



											SWIVEL TOP PLATE		FIXED TOP PLATE		SWIVEL TOP PLATE WITH BRAKE	
80	33	106	85x105	60x80	9	36	40	130	0.58	NY8051311X	0.39	NY8050311X	0.78	NY8052311X		
100	33	128	85x105	60x80	9	36	40	150	0.65	NY10051311X	0.46	NY10050311X	0.85	NY10052311X		
125	37	155	85x105	60x80	9	41	50	200	0.89	NY12551311X	0.64	NY12550311X	1.04	NY12552311X		
125	37	159	110x140	80x105	9	41	60	200	1.10	NY12551312X	1.44	NY12550312X	1.30	NY12552312X		
150	40	181	85x105	60x80	9	46	50	200	0.95	NY15051311X	0.80	NY15050311X	1.10	NY15052311X		
160	45	195	110x140	80x105	11	49	60	300	1.80	NY16051311X	1.50	NY16050311X	2.10	NY16052311X		
200	50	235	110x140	80x105	11	54	60	300	2.14	NY20051311X	1.92	NY20050311X	2.33	NY20052311X		

GhUbXUfX'Xi hm

GhUJb`Ygg'ghYY`WUghc f g`

- Round top plate swivel and swivel with trailing wheel and swivel brake
- Stainless steel pressed steel
- Double ball race
- Operating temperature -30°/+80°C



											BOLT HOLE TOP PLATE		BOLT HOLE TOP PLATE WITH BRAKE	
80	33	106	12	36	40	130	0.52	NY8051411X	0.70	NY8052411X				
100	33	128	12	36	40	150	0.55	NY10051411X	0.80	NY10052411X				
125	37	155	12	41	50	200	0.85	NY12551411X	0.99	NY12552411X				
150	40	181	12	46	50	200	0.90	NY15051411X	1.05	NY15052411X				
160	45	195	16	49	60	250	1.60	NY16051411X	1.90	NY16052411X				
200	50	235	16	54	60	250	1.95	NY20051411X	2.24	NY20052411X				

OPTIONS

- Roller bearing wheels
- Ball bearing wheels
- Solid and threaded stems
- threadguards



Wheel

NYLON



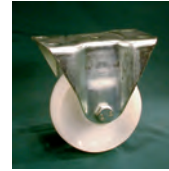
- Natural colour polyamide 6 wheel
- Plain bore wheel
- Operating temperature -30°/+80°C

PLAIN BEARING WHEEL

50	19	50	0.02	26	6.5	NY5051
63	25	100	0.04	33	11.2	NY6351
75	25	120	0.07	40	12.7	NY7551
100	32	200	0.11	39	12	NY10052
100	32	225	0.12	47	15	NY10053
100	32	225	0.12	44	12	NY10054
125	35	300	0.19	39	12	NY12552
125	35	300	0.19	47	15	NY12553
125	35	325	0.19	44	12	NY12554
150	43	400	0.36	50	19.2	NY15052

GHUBXUFX'Xi hmWUghc fg

- Rectangular top plate swivel, fixed and swivel with trailing wheel only brake except NY10052312 and NY12552312 that brake on wheel and swivel head
- Zinc plated pressed steel
- Double and single* ball race
- Operating temperature -30°/+80°C



										SWIVEL TOP PLATE	FIXED TOP PLATE	SWIVEL TOP PLATE WITH BRAKE		
50*	19	64	sw=67x48 fx=69x44	54/56x25	6	13	28	40	0.15	NY5051311	0.11	NY5050311	-	Not available
63*	23	78	sw=95x70 fx=95x59	73/76x44.5 fx=73/76x35	8	20	36	85	0.24	NY6351311	0.15	NY6350311	-	Not available
75*	25	94	105x80	sw=80/86x60 fx=80/83x35	8	22	42	120	0.36	NY7551311	0.20	NY7550311	0.40	NY7553321
100	32	135	sw=100x80 fx=105x85	76/80 x44.5/60	8	40	40	75	0.65	NY10051312	-	Not available	0.90	NY10052312
100	32	125	sw=100x80 fx=105x85	76/80 x44.5/60	8	30	45	125	0.70	NY10051313	0.40	NY10050312	1.30	NY10053311
100*	32	125	sw=128x102 fx=120x80	sw=100/105 x76/80 fx=97/100x48	10	25	50	225	1.05	NY10051321	0.95	NY10050321	1.15	NY10053321
100	32	128	sw=105x85 fx=105x89	77/80x60	8	28	45	250	0.90	NY10051322	0.63	NY10050322	1.10	Not available
125	35	160	sw=100x80 fx=105x85	76/80 x44.5/60	8	50	40	85	0.78	NY12551312	-	Not available	1.00	NY12552312
125	35	155	sw=100x80 fx=105x85	76/80 x44.5/60	8	38	45	125	0.76	NY12551313	0.53	NY12550312	0.80	NY12553311
125	35	154	sw=105x85 fx=105x89	77/80x60	8	28	45	250	1.00	NY1251321	0.68	NY12550321	-	Not available
125*	35	154	sw=162x132 fx=120x80	sw=120/140 x95/105 fx=97/100x48	10	36	50	295	1.08	NY12551322	0.73	NY12550322	-	Not available
125*	35	154	sw=145x101 fx=145x110	105/115 x64/80	10	30	50	295	1.15	NY12551323	0.66	NY12550323	1.20	NY12553321
150*	43	182	sw=162x132 fx=170x106	sw=120/140 x95/105 fx=130x67	10	42	50	360	2.04	NY15051321	1.92	NY15050321	2.33	Not available

OPTIONS

- Roller bearing wheels
- Solid and threaded stems
- Threadguards
- Polypropylene wheels

Part NY10052312 & NY12552312 have a wheel and swivel brake



NYLON

Standard and medium duty castors

- Rectangular round top plate and triangular top plate swivel castors with brake options
- Natural colour nylon wheel except 40 & 50mm that are black nylon
- Zinc plated pressed steel
- Single and double ball race
- Operating temperature -30°/+80°C



OPTIONS

- Roller bearing wheels
- Solid and threaded stems
- Expanders
- Threadguards
- Polypropylene wheels

											BOLT HOLE CASTOR		BOLT HOLE CASTOR WITH BRAKE		TRIANGULAR TOP PLATE CASTOR	
40	16	56	8	-	-	-	22	-	40	0.10	NY4051411	-	Not available	-	Not available	
50	19	65	8	-	-	-	22	-	45	0.12	NY5051411	-	Not available	-	Not available	
63	23	81	-	140x140	72/102x72/102	8	20	34	85	-	Not available	-	Not available	0.25	NY6351312	
75	25	94	-	140x140	72/102x72/102	8	22	41	120	-	Not available	-	Not available	0.37	NY7551312	
80	30	115	10	-	-	-	30	45	125	0.40	NY8051413	-	Not available	-	Not available	
100	32	135	12	-	-	-	40	40	75	0.53	NY8051412	0.70	NY10052412	-	Not available	
100	32	125	-	140x140	72/102x72/102	10	25	47	225	-	Not available	-	Not available	1.07	NY10051314	
100	32	125	10	-	-	-	30	45	125	0.46	NY10051412	0.48	NY10053411	-	Not available	
100	32	128	12	-	-	-	28	50	250	0.86	NY10051421	-	Not available	-	Not available	
125	35	160	12	-	-	-	40	40	85	0.68	NY12551412	0.80	NY12552412	-	Not available	
125	35	154	12	-	-	-	28	50	250	0.97	NY12551422	0.99	NY12553421	-	Not available	
125	35	152	10	-	-	-	38	45	125	0.61	NY12551421	0.64	NY12553411	-	Not available	
125	36	154	10	-	-	-	35	50	295	1.10	NY12551423	-	Not available	-	Not available	



BLACK PLASTIC

Standard duty castors with black plastic wheels

- Rectangular top plate swivel, fixed and swivel with trailing wheel and swivel brake
- Zinc plated pressed steel
- Double ball race
- Operating temperature -20°/+60°C



							SWIVEL TOP PLATE		FIXED TOP PLATE		SWIVEL TOP PLATE WITH BRAKE	
50	18	71	60x60	46/38x46/38	21	40	0.20	BPLA5051311	0.16	BPLA5050311	0.24	BPLA5052311
75	23	101	60x60	46/38x46/38	25	50	0.40	BPLA7551311	0.27	BPLA7550311	0.43	BPLA7552311
100	23	122	60x60	46/38x46/38	32	60	0.48	BPLA10051312	0.40	BPLA10050312	0.51	BPLA10052312

Standard duty castors with black plastic wheels

- Round top plate swivel and swivel with trailing wheel and swivel brake
- Zinc plated pressed steel
- Double ball race
- Operating temperature -20°/+60°C



							BOLT HOLE TOP PLATE		BOLT HOLE TOP PLATE WITH BRAKE	
50	18	71	10		21	40	0.19	BPLA5051411	0.21	BPLA5052411
75	23	101	10		25	50	0.39	BPLA7551411	0.36	BPLA7552411
100	23	121	10		32	60	0.47	BPLA10051412	0.53	BPLA10052412

Standard duty castors with black plastic wheels (twin wheel)

- Rectangular top plate swivel, fixed and swivel with trailing wheel and swivel brake
- Zinc plated pressed steel
- Double ball race
- Operating temperature -20°/+60°C



							SWIVEL TOP PLATE		SWIVEL TOP PLATE WITH BRAKE	
2x50	18	72	60x60	46/38x46/38	30	80	0.40	BPLA5051311TW	0.50	BPLA5052311TW
2x75	23	98	60x60	46/38x46/38	33	100	0.80	BPLA7551311TW	0.91	BPLA7552311TW

Standard duty castors with black plastic wheels (twin wheel)

- Round top plate swivel and swivel with trailing wheel and swivel brake
- Zinc plated pressed steel
- Double ball race
- Operating temperature -20°/+60°C



							BOLT HOLE TOP PLATE		BOLT HOLE TOP PLATE WITH BRAKE	
2x50	18	72	10		30	80	0.30	BPLA5051411TW	0.50	BPLA5052411TW
2x75	23	98	10		33	100	0.67	BPLA7551411TW	0.80	BPLA7552411TW

OPTIONS

- Threaded stems



RUBBER TYRED GREY

Standard duty castors with grey thermoplastic wheels

- Rectangular top plate swivel, fixed and swivel with trailing wheel and swivel brake
- Zinc plated pressed steel
- Double ball race
- Operating temperature -20°/+60°C



							SWIVEL TOP PLATE		FIXED TOP PLATE		SWIVEL TOP PLATE WITH BRAKE	
50	18	71	60x60	46/38x46/38	21	40	0.20	RTG5051311	0.16	RTG5050311	0.24	RTG5052311
75	24	101	60x60	46/38x46/38	25	50	0.40	RTG7551311	0.27	RTG7550311	0.43	RTG7552311
100	24	122	60x60	46/38x46/38	32	65	0.48	RTG10051312	0.40	RTG10050312	0.51	RTG10052312
50	18	71	60x60	46/38x46/38	21	40	0.22	RTG5071311	0.18	RTG5070311	0.26	RTG5072311
75	24	101	60x60	46/38x46/38	25	50	0.42	RTG7571311	0.29	RTG7570311	0.45	RTG7572311
100	24	122	60x60	46/38x46/38	32	65	0.50	RTG10071312	0.42	RTG10070312	0.53	RTG10072312

Standard duty castors with grey thermoplastic wheels

- Round top plate swivel and swivel with trailing brake
- Zinc plated pressed steel
- Double ball race
- Operating temperature -20°/+60°C



							BOLT HOLE TOP PLATE		BOLT HOLE TOP PLATE WITH BRAKE	
50	18	72	10	21	40	0.19	RTG5051411	0.21	RTG5052411	
75	24	101	10	25	50	0.39	RTG7551411	0.36	RTG7552411	
100	24	121	10	32	65	0.47	RTG10051412	0.53	RTG10052412	
50	18	72	10	21	40	0.21	RTG5071411	0.22	RTG5072411	
75	24	101	10	25	50	0.41	RTG7571411	0.40	RTG7572411	
100	24	121	10	32	65	0.49	RTG10071412	0.55	RTG10072412	

OPTIONS

- Solid and threaded stems
- Threadguards on plain bore wheels
- Ball bearing option



RUBBER TYRED GREY

Standard duty castors with grey thermoplastic wheels (twin wheel)

- Rectangular top plate swivel, fixed and swivel with trailing wheel and swivel brake
- Zinc plated pressed steel
- Double ball race
- Operating temperature -20°/+60°C



										SWIVEL TOP PLATE		SWIVEL TOP PLATE WITH BRAKE	
									code			code	
2x50	18	72	60x60	46/38x46/38	30	60	0.40	RTG5051311TW		0.50	RTG5052311TW		
2x75	24	98	60x60	46/38x46/38	33	80	0.80	RTG7551311TW		0.91	RTG7552311TW		
									code			code	
2x50	18	72	60x60	46/38x46/38	30	60	0.42	RTG5071311TW		0.52	RTG5072311TW		
2x75	24	98	60x60	46/38x46/38	33	80	0.82	RTG7571311TW		0.95	RTG7572311TW		

Standard duty castors with grey thermoplastic wheels (twin wheel)

- Round top plate swivel and swivel with trailing brake
- Zinc plated pressed steel
- Double ball race
- Operating temperature -20°/+60°C



OPTIONS

- Solid and threaded stems
- Threadguards on plain bore wheels
- Ball bearing option

										BOLT HOLE TOP PLATE		BOLT HOLE TOP PLATE WITH BRAKE	
									code			code	
2x50	18	72	10	30		60	0.30	RTG5051411TW		0.50	RTG5052411TW		
2x75	24	98	10	33		80	0.67	RTG7551411TW		0.80	RTG7552411TW		
									code			code	
2x50	18	72	10	30		60	0.32	RTG5071411TW		0.52	RTG5072411TW		
2x75	24	98	10	33		80	0.69	RTG7571411TW		0.82	RTG7572411TW		



RUBBER TYRED BLACK

Wheel

- Black rubber tyre on black plastic wheel centre
- Semi elastic tyre. Shore A 80-85
- Plain bore wheel
- Operating temperature -20°/+60°C



PLAIN BEARING WHEEL						
						code
80	30	50	0.14	39	12	RTB8051
100	30	70	0.26	39	12	RTB10051
125	37.5	120	0.40	49	15	RTB12551
150	37.5	130	0.70	49	20	RTB15051
160	40	140	0.79	58	20	RTB16051
180	50	180	1.04	58	20	RTB18051
200	50	205	1.41	58	20	RTB20051
250	60	280	1.76	84	25	RTB25051

GHUBXUFX'Xi miWUghc f g

- Rectangular top plate swivel, fixed and swivel with trailing wheel and swivel brake
- Zinc plated pressed steel
- Double ball race
- Operating temperature -20°/+60°C



										SWIVEL TOP PLATE		FIXED TOP PLATE		SWIVEL TOP PLATE WITH BRAKE	
80	30	106	85x105	60x80	9	36	40	50	0.62	RTB8051311	0.52	RTB8050311	0.77	RTB8052311	
100	30	128	85x105	60x80	9	36	40	70	0.76	RTB10051311	0.63	RTB10050311	0.91	RTB10052311	
125	37.5	155	85x105	60x80	9	41	50	120	1.00	RTB12551311	0.93	RTB12550311	1.17	RTB12552311	
125	37.5	159	110x140	80x105	9	41	60	120	1.21	RTB12551312	0.98	RTB12550312	1.35	RTB12552312	
150	37.5	181	85x105	60x80	9	46	50	130	1.26	RTB15051311	1.24	RTB15050311	1.49	RTB15052311	
160	40	195	110x140	80x105	11	49	60	140	2.02	RTB16051311	1.85	RTB16050311	2.27	RTB16052311	
180	50	208	110x140	80x105	11	50	60	180	2.24	RTB18051311	2.20	RTB18050311	2.49	RTB18052311	
200	50	235	110x140	80x105	11	54	60	205	2.79	RTB20051311	2.73	RTB20050311	3.04	RTB20062311	
250	60	293	160x200	120x160	14	70	85	280	6.00	RTB25061311	5.00	RTB25050311	6.50	On request	

OPTIONS

GHUBXUFX'Xi miWUghc f g

- Round top late swivel and swivel with trailing brake
- Zinc plated pressed steel
- Double ball race
- Operating temperature -20°/+60°C



										BOLT HOLE TOP PLATE		BOLT HOLE TOP PLATE WITH BRAKE	
80	30	108	12	36	40	50	0.56	RTB8051411	0.71	RTB8052411			
100	30	130	12	36	40	70	0.68	RTB10051411	0.83	RTB10052411			
125	37.5	157	12	41	50	120	0.90	RTB12551411	1.07	RTB12552411			
150	37.5	183	12	46	50	130	1.51	RTB15051411	1.68	RTB15052411			
160	40	198	16	49	60	140	1.65	RTB16051411	2.21	RTB16052411			
180	50	205	12	50	60	180	1.91	RTB18051411	2.43	RTB18052411			
200	50	238	16	54	60	200	2.48	RTB20051411	3.27	RTB20052411			

- Roller bearing wheels
- Solid and threaded stems
- Threadguards
- Grey rubber tyres



RUBBER TYRED STEEL

Wheel

- Black rubber tyre on zinc plated pressed steel centre
- Semi elastic tyre. Shore A 80-85
- Roller bearing
- Operating temperature -20°/+60°C



ROLLER BEARING WHEEL

							code
80	30	75	0.19	39	12		BRS08061
100	30	90	0.31	39	12		BRS10061
125	37.5	130	0.54	49	15		BRS12561
150	37.5	160	0.76	49	20		BRS15061
160	40	180	1.07	58	20		BRS16061
180	50	220	1.39	58	20		BRS18061
200	50	250	1.81	58	20		BRS20061
225	55	300	2.24	58	20		BRS22561
250	60	350	3.55	84	25		BRS25061
280	70	400	4.50	84	25		BRS28061

GHbXUFX'Xi hmWUghc f g

- Rectangular top plate swivel, fixed and swivel with trailing wheel and swivel brake
- Zinc plated pressed steel
- Double ball race
- Operating temperature -20°/+60°C



OPTIONS

- Plain bore wheels
- Ball bearing wheels
- Statically conductive wheels
- High temperature (max. 250°C)

										SWIVEL TOP PLATE		FIXED TOP PLATE		SWIVEL TOP PLATE WITH BRAKE			
											code			code			code
80	30	106	85x105	60x80	9	36	40	70	0.67	BRS8061311	0.49	BRS8060311	0.85	BRS8062311			
100	30	128	85x105	60x80	9	36	40	90	0.80	BRS10061311	0.62	BRS10060311	0.98	BRS10062311			
125	37.5	155	85x105	60x80	9	41	50	130	1.15	BRS12561311	0.90	BRS12560311	1.26	BRS12562311			
125	37.5	159	110x140	80x105	9	41	60	130	1.30	BRS12561312	1.10	BRS12560312	1.40	BRS12562312			
150	37.5	181	85x105	60x80	9	46	50	150	1.27	BRS15061311	1.02	BRS15060311	1.52	BRS15062311			
160	40	195	110x140	80x105	11	49	60	180	2.38	BRS16061311	2.02	BRS16060311	2.61	BRS16062311			
180	50	208	110x140	80x105	11	50	60	220	2.71	BRS18061311	2.43	BRS18060311	2.97	BRS18062311			
200	50	235	110x140	80x105	11	54	60	250	3.14	BRS20061311	2.90	BRS20060311	3.28	BRS20062311			
225	55	255	110x140	80x105	11	54	60	300	4.00	BRS22561311	3.35	BRS22560311	-	On request			
250	60	293	160x200	120x160	14	70	85	350	7.40	BRS25061311	6.30	BRS25060311	-	On request			
280	70	323	160x200	120x160	14	72	85	400	8.40	BRS28061311	7.30	BRS28060311	-	On request			

GHbXUFX'Xi hmWUghc f g

- Round top late swivel and swivel with trailing wheel and swivel brake
- Zinc plated pressed steel
- Double ball race
- Operating temperature -20°/+60°C



- rubber tyred wheels
- Solid and threaded stems
- Threadguards
- Grey rubber tyres

										BOLT HOLE TOP PLATE		BOLT HOLE TOP PLATE WITH BRAKE	
										code			code
80	30	108	12	36	40	70	0.58	BRS8061411	0.76	BRS8062411			
100	30	130	12	36	40	90	0.70	BRS10061411	0.91	BRS10062411			
125	37.5	157	12	41	50	130	1.04	BRS12561411	1.21	BRS12562411			
150	37.5	183	12	46	50	150	1.28	BRS15061411	1.44	BRS15062411			
160	40	198	16	49	60	180	1.69	BRS16061411	2.00	BRS16062411			
180	50	205	12	50	60	220	2.58	BRS18061411	-	On request			
200	50	238	16	54	60	250	3.00	BRS20061411	3.18	BRS20062411			
225	55	252	16	54	60	300	3.55	BRS22561411	-	On request			



RUBBER TYRED ANTI-STATIC

Wheel

- Black statically conductive rubber tyre on plastic and steel wheel centre
- Semi elastic tyre. Shore A 80-85
- Yellow threadguards
- Ball bearing wheel
- Resistance is $< 10^4 \Omega$
- Operating temperature $-20^{\circ}/+60^{\circ}\text{C}$



BALL BEARING WHEEL							
							code
50	18	40	0.07	22		6	RTAS5071
75	22	60	0.18	27		6	RTAS7571
100	24	70	0.36	29		8	RTAS10071

GHUBXUFX'Xi hmWUghc fg

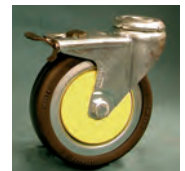
- Rectangular top plate swivel, fixed and swivel with trailing wheel and swivel brake
- Zinc plated pressed steel
- Double ball race
- Operating temperature $-20^{\circ}/+60^{\circ}\text{C}$



						SWIVEL TOP PLATE			FIXED TOP PLATE		SWIVEL TOP PLATE WITH BRAKE				
									code			code			code
50	18	73	55x55	40/42x40/42	25	40	0.29	RTAS5071311		0.14	RTAS5070311		0.32	RTAS5072311	
75	22	100	55x55	40/42x40/42	30.5	60	0.43	RTAS7571311		0.34	RTAS7570311		0.45	RTAS7572311	
100	24	124	55x55	40/42x40/42	39	70	0.65	RTAS10071311		0.55	RTAS10070311		0.67	RTAS10072311	

GHUBXUFX'Xi hmWUghc fg

- Round top plate swivel and swivel with trailing brake
- Zinc plated pressed steel
- Double ball race
- Operating temperature $-20^{\circ}/+60^{\circ}\text{C}$



							BOLT HOLE TOP PLATE		BOLT HOLE TOP PLATE WITH BRAKE		
								code			code
50	18	70	10		25	40	0.22	RTAS5071411	0.25	RTAS5072411	
75	22	97	10		30.5	60	0.36	RTAS7571411	0.32	RTAS7572411	
100	24	121	10		39	70	0.58	RTAS10071411	0.60	RTAS10072411	

OPTIONS

- Solid and threaded ste ms



BLACK ELASTIC RUBBER

Wheel

- Black elastic (70 + or - 3 Shore 'A') rubber tyre bonded to aluminium centre
- Ball bearing wheel
- Operating temperature -20°/+70°C



BALL BEARING WHEEL							
100	40	150	0.52	40	32x10	12	BEA10071
125	40	180	0.73	45	35x11	15	BEA12571
125	50	225	0.86	54	47X14	20	BEA12572
160	50	330	1.20	60	47X14	20	BEA16071
180	50	350	1.45	60	47X14	20	BEA18071
200	50	460	1.70	60	47X14	20	BEA20071
250	50	530	2.23	60	47X14	20	BEA25071
300	60	650	3.58	60	62X16	30	BEA30071

GhUbXUF`X`Xi hmWUghc f g

- Rectangular top plate swivel, fixed and swivel with trailing wheel and swivel brake
- Zinc plated pressed steel
- Double ball race
- Operating temperature -20°/+70°C



														SWIVEL TOP PLATE		FIXED TOP PLATE		SWIVEL TOP PLATE WITH BRAKE	
100	40	128	85x105	60x80	9	36	40	150	0.65	BEA10071311	0.46	BEA10070311	0.87	BEA10072311					
125	40	155	85x105	60x80	9	41	50	180	0.89	BEA12571311	0.64	BEA12570311	1.04	BEA12572311					
160	50	181	110x140	80x105	11	49	50	300	0.95	BEA16071311	0.80	BEA16070311	1.10	BEA16072311					
200	50	195	110x140	80x105	11	54	60	300	1.80	BEA20071311	1.7	BEA20070311	2.10	BEA20072311					

Medium duty castors

- Rectangular top plate swivel, fixed and swivel with leading wheel and swivel brake
- Zinc plated pressed steel
- Double ball race
- Operating temperature -20°/+70°C



														SWIVEL TOP PLATE		FIXED TOP PLATE		SWIVEL TOP PLATE WITH BRAKE	
100	40	147	85x105	60x80	9	38	50	150	1.31	BEA10071321	0.97	BEA10070321	1.46	BEA10072321					
125	40	159	85x105	60x80	9	38	50	225	1.89	BEA12571321	1.40	BEA12570321	2.06	BEA12572321					
160	50	207	110x140	80x105	11	40	53	330	3.49	BEA16071321	2.71	BEA16070321	3.74	BEA16072321					
180	50	233	110x140	80x105	11	56	60	30	3.91	BEA18071321	3.03	BEA18070321	4.16	BEA18072321					
200	50	243	110x140	80x105	11	56	60	460	4.16	BEA20071321	3.28	BEA20070321	4.41	BEA20072321					
250	50	308	160x200	120x160	14	63	80	530	7.83	BEA25071321	5.40	BEA25070321	8.33	BEA25072321					
300	60	355	160x200	120x160	15	70	80	650	9.50	BEA30071321	6.30	BEA30070321	-	Not available					

OPTIONS

- Grey none marking tyres



LARGE BLACK RUBBER TYRED STEEL WHEEL

Wheel

- Solid black rubber tyred wheels with pressed steel centre
- Plain, roller and ball bearing wheels
- Operating temperature -20°/+80°C



					wheel centre				
160	40	175	1.10	51		1"	LBRS16051	LBRS16061	Not available
180	50	200	1.40	51		1"	LBRS18051	LBRS18061	Not available
200	50	250	1.90	51		1"	LBRS20051	LBRS20061	Not available
250	50	350	2.60	51		1"	LBRS25051	LBRS25061	Not available
300	50	400	3.70	51		1"	LBRS30051	LBRS30061	Not available
330	70	300	5.0	66		1"	LBRS33051	Not available	Not available
330	70	300	5.0	66		25mm	Not available	LBRS33061	Not available
330	70	300	5.0	66		1"	Not available	LBRS33062	Not available
330	70	300	5.0	83		1"	Not available	Not available	LBRS33071
355	75	400	7.0	66		1"	LBRS35551	Not available	Not available
355	75	400	7.0	63		25mm	Not available	LBRS35561	Not available
355	75	400	7.0	63		1"	Not available	LBRS35562	Not available
355	75	400	7.0	83		1"	Not available	Not available	LBRS35571
405	100	500	10.5	66		1"	LBRS40551	Not available	Not available
405	100	500	10.5	66		1"	LBRS40552*	Not available	Not available
405	100	500	10.5	63		25mm	Not available	LBRS40561	Not available
405	100	500	10.5	63		1"	Not available	LBRS40562	Not available
405	100	500	10.5	83		1"	Not available	Not available	LBRS40571
455	130	750	16.0	100		1 1/4"	Not available	LBRS45561	Not available
455	130	750	16.0	75		30mm	Not available	Not available	LBRS45571

Black paint finish

* This item comes with an axle lock nut



POLYURETHANE TYRED NYLON

Wheel

- Injection moulded red polyurethane tyre bonded to nylon wheel centre
- Plain bore wheel
- Operating temperature -30°/+80°C



PLAIN BEARING WHEEL

							code
80	30	100	0.19	40	12		PTN8051
100	30	130	0.31	40	12		PTN10051
125	35	200	0.54	49	15		PTN12551
150	40	250	0.76	49	15		PTN15051
160	50	350	1.07	58	20		PTN16051
200	50	380	1.81	58	20		PTN20051

GhUbXUfX`Xi ImiWUghc f g

- Rectangular top plate swivel, fixed and swivel with trailing wheel and swivel brake
- Zinc plated pressed steel
- Double ball race
- Operating temperature -30°/+80°C



SWIVEL TOP PLATE				FIXED TOP PLATE				SWIVEL TOP PLATE WITH BRAKE			
------------------	--	--	--	-----------------	--	--	--	-----------------------------	--	--	--

										code			code			code
80	33	106	85x105	60x80	9	36	40	100	0.58	PTN8051311	0.39	PTN8050311	0.78	PTN8052311		
100	33	128	85x105	60x80	9	36	40	130	0.65	PTN10051311	0.46	PTN10050311	0.85	PTN10052311		
125	37	155	85x105	60x80	9	41	50	170	0.89	PTN12551311	0.64	PTN12550311	1.04	PTN12552311		
125	37	159	110x140	80x105	9	41	60	170	1.10	PTN12551312	1.44	PTN12550312	1.30	PTN12552312		
150	40	181	85x105	60x80	9	46	50	170	0.95	PTN15051311	0.80	PTN15050311	1.10	PTN15052311		
160	45	195	110x140	80x105	11	49	60	300	1.80	PTN16051311	1.50	PTN16050311	2.10	PTN16052311		
200	50	235	110x140	80x105	11	54	60	300	2.14	PTN20051311	1.92	PTN20050311	2.33	PTN20052311		

GhUbXUfX`Xi ImiWUghc f g

- Round top late swivel and swivel with trailing wheel and swivel brake
- Zinc plated pressed steel
- Double ball race
- Operating temperature -30°/+80°C



OPTIONS

- Roller bearing wheels
- Ball bearing wheels
- Solid and threaded stems
- Threadguards

BOLT HOLE TOP PLATE				BOLT HOLE TOP PLATE WITH BRAKE			
---------------------	--	--	--	--------------------------------	--	--	--

								code			code
80	33	106	12	36	40	100	0.52	PTN8051411	0.70	PTN8052411	
100	33	128	12	36	40	130	0.55	PTN10051411	0.80	PTN10052411	
125	37	155	12	41	50	150	0.85	PTN12551411	0.99	PTN12552411	
150	40	181	12	46	50	150	0.90	PTN15051411	1.05	PTN15052411	
160	45	195	16	49	60	300	1.60	PTN16051411	1.90	PTN16052411	
200	50	235	16	54	60	300	1.95	PTN20051411	2.24	PTN20052411	



POLYURETHANE TYRED NYLON

Wheel

- Injection moulded red polyurethane tyre bonded to nylon wheel centre
- Plain bore wheel
- Operating temperature -30°/+80°C



PLAIN BEARING WHEEL						
						code
80	30	100	0.19	40	12	PTN8051
100	30	130	0.31	40	12	PTN10051
125	35	200	0.54	49	15	PTN12551
150	40	250	0.76	49	15	PTN15051
160	50	350	1.07	58	20	PTN16051
200	50	380	1.81	58	20	PTN20051

GHUbxUfX'Xi hm

GHUJb`Ygg`ghYY`WUghc f g`

- Rectangular top plate swivel, fixed and swivel with trailing wheel and swivel brake
- Stainless steel pressed steel
- Double ball race
- Operating temperature -30°/+80°C



										SWIVEL TOP PLATE		FIXED TOP PLATE		SWIVEL TOP PLATE WITH BRAKE	
										code		code		code	
80	33	106	85x105	60x80	9	36	40	100	0.58	PTN8051311X	0.39	PTN8050311X	0.78	PTN8052311X	
100	33	128	85x105	60x80	9	36	40	130	0.65	PTN10051311X	0.46	PTN10050311X	0.85	PTN10052311X	
125	37	155	85x105	60x80	9	41	50	200	0.89	PTN12551311X	0.64	PTN12550311X	1.04	PTN12552311X	
125	37	159	110x140	80x105	9	41	60	200	1.10	PTN12551312X	1.44	PTN12550312X	1.30	PTN12552312X	
150	40	181	85x105	60x80	9	46	50	200	0.95	PTN15051311X	0.80	PTN15050311X	1.10	PTN15052311X	
160	45	195	110x140	80x105	11	49	60	300	1.80	PTN16051311X	1.50	PTN16050311X	2.10	PTN16052311X	
200	50	235	110x140	80x105	11	54	60	300	2.14	PTN20051311X	1.92	PTN20050311X	2.33	PTN20052311X	

OPTIONS

GHUbxUfX'Xi hm

GHUJb`Ygg`ghYY`WUghc f g`

- Round top plate swivel and swivel with trailing wheel and swivel brake
- Stainless steel pressed steel
- Double ball race
- Operating temperature -30°/+80°C



										BOLT HOLE TOP PLATE		BOLT HOLE TOP PLATE WITH BRAKE	
								code		code		code	
80	33	106	12	36	40	100	0.52	PTN8051411X	0.70	PTN8052411X			
100	33	128	12	36	40	130	0.55	PTN10051411X	0.80	PTN10052411X			
125	37	155	12	41	50	200	0.85	PTN12551411X	0.99	PTN12552411X			
150	40	181	12	46	50	200	0.90	PTN15051411X	1.05	PTN15052411X			
160	45	195	16	49	60	300	1.60	PTN16051411X	1.90	PTN16052411X			
200	50	235	16	54	60	300	1.95	PTN20051411X	2.24	PTN20052411X			

- Roller bearing wheels

- Ball bearing wheels

- Solid and threaded stems

- Threadguards



POLYURETHANE TYRED ALUMINIUM

Wheel

- Cast, light brown polyurethane tyre bonded to aluminium wheel centre
- Ball bearing wheel
- Operating temperature -20°/+60°C



BALL BEARING WHEEL							
80	25	220	0.20	30	28x8	12	PTA8071
100	30	250	0.34	40	32x10	12	PTA10071
125	35	400	0.50	40	32x10	12	PTA12571
150	40	600	0.91	50	47x14	20	PTA15071
200	50	850	1.45	55	52x15	20	PTA20071
200	50	850	1.45	84	52x15	25	PTA20072

Rectangular top plate swivel, fixed and swivel with trailing wheel and swivel brake

- Rectangular top plate swivel, fixed and swivel with trailing wheel and swivel brake
- Zinc plated pressed steel
- Double ball race
- Operating temperature -20°/+60°C



											SWIVEL TOP PLATE		FIXED TOP PLATE		SWIVEL TOP PLATE WITH BRAKE	
80	25	106	85x105	60x80	9	36	40	170	0.72	PTA8071311	0.72	PTA8070311	0.91	PTA8072311		
100	30	128	85x105	60x80	9	36	40	170	0.94	PTA10071311	0.69	PTA10070311	1.08	PTA10072311		
125	35	155	85x105	60x80	9	41	50	170	1.14	PTA12571311	0.89	PTA12570311	1.28	PTA12572311		
125	35	159	110x140	80x105	9	41	60	170	1.25	PTA12571312	1.01	PTA12570312	1.40	PTA12572312		
150	40	181	110x140	80x105	11	54	60	300	2.34	PTA15071311	2.04	PTA15070311	-	Not available		
200	50	235	110x140	80x105	11	54	60	300	3.05	PTA20071311	2.76	PTA20070311	3.27	PTA20062311		

Round top plate swivel and swivel with trailing brake

- Round top plate swivel and swivel with trailing brake
- Zinc plated pressed steel
- Double ball race
- Operating temperature -20°/+60°C



											BOLT HOLE TOP PLATE		BOLT HOLE TOP PLATE WITH BRAKE	
80	25	108	12	36	40	170	0.65	PTA8071411	0.78	PTA8072411				
100	30	130	12	36	40	170	0.88	PTA10071411	1.09	PTA10072411				
125	35	157	12	41	50	170	1.08	PTA12571411	1.23	PTA12572411				
150	40	198	16	54	60	300	2.20	PTA15071411	2.49	PTA15072411				
200	50	238	16	54	60	300	2.95	PTA20071411	3.24	PTA20072411				

Medium duty castors

- Rectangular top plate swivel, fixed and swivel with leading wheel and swivel brake
- Zinc plated pressed steel
- Double ball race
- Operating temperature -30°/+80°C



											SWIVEL TOP PLATE		FIXED TOP PLATE		SWIVEL TOP PLATE WITH BRAKE	
100	40	147	85x105	60x80	9	38	50	300	1.12	PTA10071331	0.88	PTA10070331	1.45	PTA10072331		
125	45	159	85x105	60x80	9	38	50	350	1.69	PTA12571331	1.20	PTA12570331	2.04	PTA12572331		
150	50	185	110x140	80x105	11	40	53	500	2.60	PTA15071331	1.99	PTA15070331	2.95	PTA15072331		
200	60	243	110x140	80x105	11	56	60	800	3.96	PTA20071331	3.08	PTA20070331	4.46	PTA20072331		

OPTIONS

- Solid and threaded stems
- Threadguards



POLYURETHANE TYRED ON CAST IRON

Wheel

- Cast (orange coloured) polyurethane tyre bonded to cast iron wheel centre
- Ball bearing wheel
- Operating temperature -30°/+80°C



BALL BEARING WHEEL							
		Kg	Kg				code
80	36	250	0.61	36	35x11	15	PTC8071
100	30	250	0.83	36	35x11	15	PTC10071
125	40	360	1.50	47	35x11	15	PTC12571
125	50	550	1.70	60	47x14	20	PTC12572
150	60	930	3.95	65	52x15	25	PTC15071
160	40	700	2.55	58	47x14	20	PTC16071
160	50	800	3.2	60	47x14	20	PTC16072
175	40	720	3.15	52	47x14	20	PTC17571
200	50	900	3.7	52	52x15	25	PTC20071
200	50	1000	5.0	60	52x15	25	PTC20072
200	80	1500	7.9	80	62x16	30	PTC20073
200	100	1950	10.65	100	62x16	30	PTC20074
250	50	1200	6.8	65	52x15	25	PTC25071
250	60	1400	6.9	65	52x15	25	PTC25072
250	80	1800	7.9	80	62x16	30	PTC25073
250	100	2200	15.0	100	62x16	30	PTC25074
300	70	2100	12.8	70	62x16	30	PTC30071
300	80	2200	14.5	80	62x16	30	PTC30072
350	100	3500	26.5	100	80x18	40	PTC35071
400	80	3300	27.2	100	80x18	40	PTC40071
400	100	3800	34.0	100	80x18	40	PTC40072
500	100	4500	55.0	100	90x20	50	PTC50071

Medium duty castors

- Rectangular top plate swivel, fixed and swivel with trailing wheel and swivel brake
- Zinc plated pressed steel
- Double ball race
- Operating temperature -20°/+80°C



OPTIONS

- With bearing facility and no bearings

														SWIVEL TOP PLATE			FIXED TOP PLATE			SWIVEL TOP PLATE WITH BRAKE		
								Kg	Kg	code	Kg	code	Kg	code								
80	36	112	85x105	60x80	9	38	39	180	1.35	PTC8071321	0.97	PTC8070321	1.25	PTC8073321								
100	30	132	85x105	60x80	9	38	39	200	1.62	PTC10071321	1.28	PTC10070321	2.12	PTC10073321								
125	40	159	85x105	60x80	9	38	53	300	2.66	PTC12571321	2.17	PTC12570321	3.16	PTC12573321								
160	40	207	110x140	80x105	11	53	62	550	4.80	PTC16071321	3.63	PTC16070321	5.54	PTC16073321								
200	50	243	140x110	105x80	11	56	62	830	6.66	PTC20071321	5.78	PTC20070321	7.36	PTC20073321								
250	50	308	160x200	120x10	14	63	80	1200	12.1	PTC25071321	9.97	PTC25070321	12.9	PTC25073321								



HIGH TEMPERATURE

Wheel

- Black solid resin wheel
- Plain bearing wheel
- Operating temperature -20°/+300°C
Special lubricant should be used in bracket at extremes of temperature



PLAIN BEARING WHEEL						
		Kg	Kg			code
80	35	40	12	150	0.20	HT8051
100	35	40	12	200	0.35	H10051
125	40	48	20	250	0.49	HT12551
160	50	58	20	275	1.04	HT16051
200	50	58	20	300	1.50	HT20051

GhUbXUfX'Xi ImWUghc fg

- Rectangular top plate swivel, fixed and bolt hole castors
- Zinc plated pressed steel
- Double ball race
- Operating temperature -20°/+300°C
Special lubricant should be used in bracket at extremes of temperature



													SWIVEL TOP PLATE		FIXED TOP PLATE		BOLT HOLE TOP PLATE	
										code							code	
80	35	106	85x105	60x80	9	36	40	130	0.67	HT8051311	0.55	HT8050311	0.60	HT8051411				
100	35	128	85x105	60x80	9	36	40	150	0.83	HT10051311	0.70	HT10050311	0.75	HT10051411				
125	40	155	85x105	60x80	9	41	50	170	1.34	HT12551311	1.09	HT12550311	1.2	HT12551411				
160	50	195	110x140	80x105	11	49	60	300	2.45	HT15051311	2.13	HT15050311	2.25	HT15051411				
200	50	235	110x140	80x105	11	54	60	300	3.11	HT20051311	2.70	HT20050311	2.95	HT20051411				

Standard duty castors stainless steel

- Rectangular top plate swivel, fixed and bolt hole castors
- Stainless pressed steel
- Double ball race
- Operating temperature -20°/+300°C
Special lubricant should be used in bracket at extremes of temperature



													SWIVEL TOP PLATE		FIXED TOP PLATE		BOLT HOLE TOP PLATE	
										code							code	
80	35	106	85x105	60x80	9	36	40	130	0.67	HT8051311X	0.55	HT8050311X	0.60	HT8051411X				
100	35	128	85x105	60x80	9	36	40	150	0.83	HT10051311X	0.70	HT10050311X	0.75	HT10051411X				
125	40	155	85x105	60x80	9	41	50	170	1.34	HT12551311X	1.09	HT12550311X	1.2	HT12551411X				
160	50	195	110x140	80x105	11	49	60	300	2.45	HT15051311X	2.13	HT15050311X	2.25	HT15051411X				
200	50	235	110x140	80x105	11	54	60	300	3.11	HT20051311X	2.70	HT20050311X	2.95	HT20051411X				

OPTIONS

- Bolt hole castors
- Heavier duty castors
- Low friction axle bushes



CAST IRON

Wheel

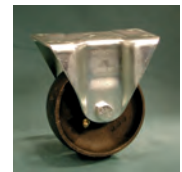
- Cast iron wheel
- Plain bore wheel
- Operating temperature -40°/+500°C
Special lubricants are required for both wheel and bracket at temperature extremes.



						PLAIN BEARING WHEEL	
							code
75	30	120	0.51	40	12.7		CI7551
100	38	300	0.95	48	15		CI10051
125	38	380	1.11	48	15		CI12551
150	40	500	1.75	51	19.2		CI15051

Medium duty castors

- Rectangular top plate swivel and fixed castors
- Zinc plated pressed steel
- Single ball race



										SWIVEL TOP PLATE		FIXED TOP PLATE		
											code			code
75	30	94	105x80	sw=80/86x60 fx=80/83x35	8	22	42	120	0.93	CI7551321	0.75	CI7550321		
100	38	125	sw=128x102 fx=120x80	sw=100/105x76/80 fx=97/100x48	10	25	50	225	1.80	CI10051321	1.38	CI10050321		
125	38	154	sw=162x132 fx=120x80	sw=120/140x95/105 fx=97/100x48	10	36	50	295	2.55	CI12551321	1.60	CI12550321		
125	38	154	sw=145x101 fx=145x110	105/115x64/80	10	32	50	295	2.08	CI12551322	1.53	CI12550322		
150	43	182	sw=162x132 fx=170x106	sw=120/140x95/105 fx=130x67	10	36	50	355	3.01	CI15051321	2.50	CI15050321		

OPTIONS

- 125mm roller bearing wheel
- Bolt hole and triangular top plate fitting



PALLET TRUCK ROLLERS

Nylon roller

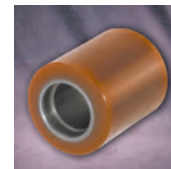
- Nylon/polyamide 6 natural colour nylon roller with ball bearing facility
- Heavy duty with low rolling resistance
- Operating temperature -30/+80°C



			facility	Kg	Kg	code
80	60		47x14	600	0.209	PRNY80X60BBF(47X14)1
80	74		47x14	700	0.264	PRNY80X74BBF(47X14)1
82	54		47x14	600	0.202	PRNY82X54BBF(47X14)1
82	70		47x14	700	0.273	PRNY82X70BBF(47X14)1
82	72		47x14	700	0.278	PRNY82X72BBF(47X14)1
82	80		47x14	800	0.316	PRNY82X80BBF(47X14)1
82	84		47x14	850	0.339	PRNY82X84BBF(47X14)1
82	88		47x14	900	0.348	PRNY82X88BBF(47X14)1
82	91		47x14	900	0.36	PRNY82X91BBF(47X14)1
82	95		47x14	1000	0.38	PRNY82X95BBF(47X14)1
82	100		47x14	1000	0.4	PRNY82X100BBF(47X14)1
85	60		47x14	750	0.26	PRNY85X60BBF(47X14)1
85	70		47x14	800	0.295	PRNY85X70BBF(47X14)1
85	80		47x14	850	0.365	PRNY85X80BBF(47X14)1
85	90		47x14	950	0.416	PRNY85X90BBF(47X14)1
85	100		47x14	1100	0.459	PRNY85X100BBF(47X14)1

Polyurethane roller

- Cast polyurethane bonded to steel core roller with ball bearing facility
- 92-95 Shore 'A' tread hardness
- Operating temperature -20/+80°C



OPTIONS

			facility	Kg	Kg	code
80	50		47x14	400	0.441	PRPTC80X50BBF(47X14)1
80	70		47x14	450	0.444	PRPTC80X70BBF(47X14)1
82	50		47x14	350	0.448	PRPTC82X50BBF(47X14)1
82	60		47x14	450	0.548	PRPTC82X60BBF(47X14)1
82	70		47x14	500	0.670	PRPTC82X70BBF(47X14)1
82	80		47x14	600	0.780	PRPTC82X80BBF(47X14)1
82	90		47x14	650	0.843	PRPTC82X90BBF(47X14)1
82	100		47x14	700	0.960	PRPTC82X100BBF(47X14)1
85	50		47x14	350	0.550	PRPTC85X50BBF(47X14)1
85	60		47x14	450	0.571	PRPTC85X60BBF(47X14)1
85	70		47x14	550	0.683	PRPTC85X70BBF(47X14)1
85	75		47x14	575	0.745	PRPTC85X75BBF(47X14)1
85	80		47x14	600	0.784	PRPTC85X80BBF(47X14)1
85	90		47x14	700	0.930	PRPTC85X90BBF(47X14)1
85	100		47x14	800	1.020	PRPTC85X100BBF(47X14)1
85	110		47x14	850	1.150	PRPTC85X110BBF(47X14)1
85	120		47x14	900	1.234	PRPTC85X120BBF(47X14)1

- Alternate dimensions
- Various bearing types. Standard come with one external steel shield
- Elastic polyurethane and polyurethane rollers



PNEUMATIC WHEELS

Pneumatic wheel plastic centre

- Plastic rim (PNEP) with black outer tyre/cover and inner tube. Available with plain, roller and ball bearing bore (PB, RB & BB)
- Wheels are for slow speed (up to 4km/hour) applications
- Excellent for shock absorption, soft and uneven floor/ground surfaces
- Operating temperature -20/+80°C



				bearing type PB, RB or BB	standard tyre or cover profile	alternative tyre or cover profile	ply	bar or air pressure	 Kg	code
				BB	1	None	2	2.5	50	PNEP150711
				PB	1	None	2	2.5	75	PNEP200511
				RB	1	None	2	2.5	75	PNEP200611
				BB	1	None	2	2.5	75	PNEP200711
				PB	1	2	2	2.5	200	PNEP260511
				RB	1	2	2	2.5	200	PNEP260611
				BB	1	2	2	2.5	200	PNEP260711
				PB	4	None	4	2.5	250	PNEP300511
				RB	4	None	4	2.5	250	PNEP300611
				BB	4	None	4	2.5	250	PNEP300711
				PB	1	2	2	2.5	250	PNEP400511
				RB	1	2	2	2.5	250	PNEP400611
				BB	1	2	2	2.5	250	PNEP400711

Pneumatic wheel plastic centre

- Steel rim (PNES) with black outer tyre/cover and inner tube. Available with roller and ball bearing bore
- Wheels are for slow speed (up to 4km/hour) applications
- Excellent for shock absorption, soft and uneven floor/ground surfaces
- Operating temperature -20/+80°C



OPTIONS

- Many other sizes and configurations available

				bearing type PB, RB or BB	standard tyre or cover profile	alternative tyre or cover profile	ply	bar or air pressure	 Kg	code
				RB	1	None	2	2.5	75	PNES200611
				BB	1	None	2	2.5	75	PNES200711
				RB	1	2	4	2.5	200	PNES260611
				BB	1	2	4	2.5	200	PNES260711
				RB	1	2 or 2a	4	2.5	250	PNES400611
				BB	1	2 or 2a	4	2.5	250	PNES400711

Heavy duty pneumatic wheels on next page

The stated air pressure (bar) values must be adhered to and regularly checked

Tyre or cover profiles



profile 1



profile 2



profile 2R



profile 4



profile 5



PNEUMATIC WHEELS

Heavy duty pneumatic wheels

- Wheels are designed for industrial ground transport equipment. It should be noted that the stated carrying capacities are at speeds of 4km/hour. The wheels can be used at faster speeds however the carrying capacity must be reduced. If in doubt please ask.
- Two piece steel rim with hub cap on sizes 300, 410, 460 and 540mm with black outer tyre/cover and inner tube. With ball bearing bore.
- Excellent for shock absorption, soft and uneven floor/ground surfaces
- Operating temperature -20/+80°C



				bearing type PB, RB or BB	standard tyre or cover profile	alternative tyre or cover profile	ply	bar or air pressure		code
245	80	75	20	RB	4	5	4	5	250	PNES245621
245	80	75	25	BB	4	5	4	5	250	PNES245721
300	100	75	20	RB	5	None	6	6	350	PNES300621
300	100	75	25	BB	5	None	6	6	350	PNES300721
410	110	100	30	BB	5	None	6	7	500	PNES410721
460	140	100	30	BB	5	None	6	7	750	PNES460721
540	170	100	30	BB	5	None	10	7	1000	PNES540721

Standard duty pneumatic castors

- Rectangular top plate swivel, fixed and swivel with leading wheel and swivel brake
- Zinc plated pressed steel
- Double ball race
- Operating temperature -20°/+60°C



							profile		SWIVEL TOP PLATE		FIXED TOP PLATE		SWIVEL TOP PLATE WITH BRAKE	
										code		code		code
200	50	235	135x110	105x80	11	54	1	75	2.05	PNES20061311	1.65	PNES20060311	2.86	PNES20062311
260	85	295	175x175	140x140	15	70	1	200	4.28	PNES26061311	3.58	PNES26060311	4.79	PNES26062311
300	100	408	150x150	125x125	10	75	4	250	9.58	PNES30061311	6.76	PNES30060311	-	NA
400	100	458	150x150	125x125	10	75	1	250	9.40	PNES40061311	6.58	PNES40060311	-	NA

OPTIONS

- Alternate tyre Profiles

The stated air pressure (bar) values must be adhered to and regularly checked

Tyre profiles



profile 1



profile 2



profile 2R



profile 4



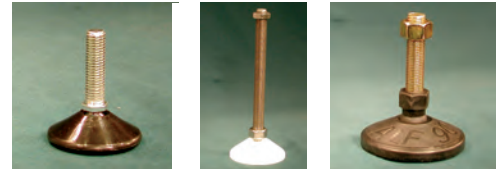
profile 5



ADJUSTABLE LOAD FOOT

Adjustable load foot

- Nylon, polyethylene and polypropylene bases
- All have threaded stems that can tilt up to a maximum of 25° from perpendicular whilst still achieving stated load
- There are a variety of stem diameters (6 & 12mm not shown) and lengths so that the appropriate amount of height adjustment can be achieved for levelling on uneven floors. The base of the threaded stem has a formed 12mm hexagon shape for adjustment
- Operating temperature is -20°/+80°C for nylon. For polyethylene and polypropylene it is -10 to +60°C



Black Polyethylene and Polypropylene bases with zinc plated stems

⊙	height to stem base	material	M8 x 12.5			M10 x 37.5		
			Kg	Kg	code	Kg	Kg	code
25	20	Polyethylene	50	0.017	ALF25TS8X120	50	0.031	ALF25TS10X370
32.5	20	Polyethylene	75	0.020	ALF32TS8X120	75	0.034	ALF32TS10X370
40	20	Polyethylene	100	0.024	ALF40TS8X120	100	0.038	ALF40TS10X370
47.5	20	Polypropylene	100	0.027	ALF47TS8X120	250	0.040	ALF47TS10X370
55	20	Polypropylene	100	0.031	ALF55TS8X120	250	0.049	ALF55TS10X370

White polypropylene base + stainless steel stem

⊙	height to stem base	stem size	Kg	Kg	code
50	42	10x75	250	0.10	ALF50TS10X750X
50	42	10x100	250	0.12	ALF50TS10X1000X
80	55	12x150	400	0.22	ALF80TS12X1500X
80	55	16x150	1000	0.37	ALF80TS16X1500X
80	55	20x150	1200	0.53	ALF80TS20X1500X
80	55	24x150	1200	0.78	ALF80TS24X1500X
105	55	16x150	1000	0.44	ALF105TS16X150X
105	55	20x150	1200	0.60	ALF105TS20X1500X
105	55	24x150	1200	0.75	ALF105TS24X1500X

Black nylon 66 base with zinc and stainless stems and a blue synthetic rubber absorption pad

⊙	height to stem base	Stem size MS=mild steel SS=stainless steel	Kg	Kg	code
60	51	MS12x65	800	0.32	ALF60TS12X650
60	51	MS16x65	1000	0.37	ALF60TS16X650
60	51	MS16x150	800	0.45	ALF60TS16X1500
60	51	SS12x65	1000	0.33	ALF60TS12X650X
60	51	SS16x65	800	0.38	ALF60TS16X650X
90	51	MS12x65	1000	0.42	ALF90TS12X650
90	51	MS16x65	800	0.47	ALF90TS16X650
90	51	MS16x150	1000	0.55	ALF90TS16X1500
90	51	SS12x65	1000	0.43	ALF90TS12X650X
90	51	SS16x65	1000	0.49	ALF90TS16X650X

Many other sizes and dimensions of insert available including all stainless steel and bolt down bases



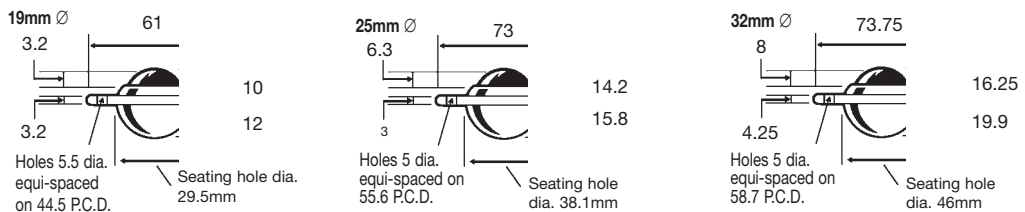
BALL TRANSFER UNITS

- A ball transfer unit consists of a large ball seated on a quantity of small bearings (balls) located inside in a hemispherical cup
- With this design (large ball supported by between 80 and 150 smaller balls) the large ball can immediately rotate in any direction
- It is normal for the load to be supported through the centre of the unit and whilst it can effect the stated load it can also be applied as an offset load or the ball transfer unit can be used inverted
- There is a hole in base of bearing cup so self cleaning
- Operating temperature -30 to +70°C



Flange fitting (flying saucer type). Zinc plated pressed steel with carbon steel balls and stainless steel body with stainless balls. Three hole type.

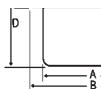
ZINC PLATED BODY WITH CARBON STEEL BALLS					ALL STAINLESS STEEL				
ball diameter mm	up load kg	down load kg	(Kg)	code	ball diameter mm	up load kg	down load kg	(Kg)	code
19	25	10	0.08	BTU19FLANGE	19	25	10	0.08	BTU19FLANGEX
25	55	25	0.18	BTU25FLANGE	25	55	25	0.18	BTU25FLANGEX
32	125	55	0.26	BTU32FLANGE	32	125	55	0.26	BTU32FLANGEX



European type Zinc plated pressed steel with carbon steel balls and stainless steel body with stainless balls. The main cup is manufactured from toughened steel.



ball diameter mm	steel ball load kg	stainless ball load kg	base diameter A	flange diameter B	height above deck C	D	flange thickness E	ZINC BODY WITH STEEL BALLS		STAINLESS BODY AND BALLS	
								(Kg)	code	(Kg)	code
15	45	35	24	31	9.5	21	2.8	0.04	BTU15EURO	0.04	BTU15EUROX
22	120	90	36	45	9.8	30	2.8	0.13	BTU22EURO	0.13	BTU22EUROX
30	230	175	45	55	13.8	37	4	0.27	BTU30EURO	0.27	BTU30EUROX
45	550	250	62	75	19	54	4	0.72	BTU45EURO	0.72	BTU45EUROX



Other relevant information: Recommended hole sizes to fit with base is base diameter +1 to +1.5mm. There are alternate versions with slots in flange to ease fitting. For sizes 22 & 30mm there is a clip available that fits around base of BTU So that the BTU can be pressed into it's location hole

Other types on application



Bolt fitting



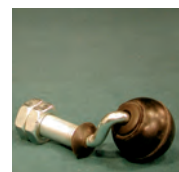
Heavy duty with machined body



Spring loaded



Base fixing



Glass inverted castors



TWIN WHEELED FURNITURE CASTORS

Furniture castor

- Black injection moulded synthetic material twin wheel furniture castor
- Plain bore wheel
- Alternate with polyurethane tyred wheels
- Various fittings



castor description						with 40x40 top plate and 29x29 hole centres	with M8x15mm threaded stem	with M10x15mm threaded stem	with 35mm long polyamide socket to suit 18mm od x10mm id tube	with 26mm long metal socket to suit 20mm od x 13mm id tube
35mm	35	2x13	37	18		TWFU3551311	TWFU3551411TS8	TWFU3551411TS10	TWFU3551411PS	TWFU3551411MS
35mm	35	2x13	43	18		TWFU3551312	TWFU3551412TS8	TWFU3551412TS10	TWFU3551412PS	TWFU3551412MS
35mm with brake	35	2x10	43	18		TWFU3553311	TWFU3553411TS8	TWFU3553411TS10	TWFU3553411PS	TWFU3553411MS
40mm	40	2x10	50	16		TWFU4051311	TWFU4051411TS8	TWFU4051411TS10	TWFU4051411PS	TWFU4051411MS
40mm with brake	40	2x10	50	16		TWFU4053311	TWFU4053411TS8	TWFU4053411TS10	TWFU4053411PS	TWFU4053411MS
50mm	50	2x12	62	18		TWFU5051311	TWFU5051411TS8	TWFU5051411TS10	TWFU5051411PS	TWFU5051411MS
50mm with brake	50	2x12	62	18		TWFU4053311	TWFU5053411TS8	TWFU5053411TS10	TWFU5053411PS	TWFU5053411MS
50mm with polyurethane tyre	50	2x12	62	18		TWFU5051312	TWFU5051412TS8	TWFU5051412TS10	TWFU5051412PS	TWFU5051412MS
50mm with polyurethane tyre and brake	50	2x12	62	18		TWFU5053312	TWFU5053412TS8	TWFU5053412TS10	TWFU5053412PS	TWFU5053412MS

OPTIONS

- Other sizes fittings and colours available on request





additional products

data sheets of these products are available on request in hard copy or electronic form

NY

NYLON



- Rectangular top plate swivel, fixed and swivel with trailing wheel brake
- Zinc plated pressed steel with forks welded to swivel head
- Double ball race
- Operating temperature -30°/+80°C

Diameters
100 to 200mm

Carrying capacities
270 to 520 kg

NY

NYLON



- Rectangular top plate swivel, fixed and swivel with trailing wheel brake
- Zinc plated pressed steel
- Double ball race
- Operating temperature -30°/+80°C

Diameters
80 to 250mm

Carrying capacities
150 to 1100 kg

RTG

RUBBER TYRED GREY



- Rectangular top plate swivel, fixed and swivel with trailing wheel brake plus bolt hole and bolt hole with brake
- Stainless pressed steel
- Double ball race
- Operating temperature -20°/+80°C

Diameters
100 to 200mm

Carrying capacities
200 to 830 kg

PTN

POLYURETHANE TYRED NYLON



- Rectangular top plate swivel, fixed and swivel with leading wheel brake
- Zinc plated pressed steel
- Double ball race
- Operating temperature -20°/+80°C

Diameters
100 to 200mm

Carrying capacities
200 to 830 kg

PTO

POLYURETHANE TYRE ON POLYOLEFIN



- Rectangular top plate swivel, fixed and swivel with trailing wheel brake
- Zinc plated pressed steel with forks welded to swivel head
- Double ball race
- Operating temperature -15°/+80°C

Diameters
100 to 200mm

Carrying capacities
230 to 500 kg

PTC

POLYURETHANE TYRE ON CAST IRON



- Rectangular top plate swivel, fixed and swivel with leading wheel brake
- Zinc plated pressed steel and fabricated castors
- Double ball race and taper bearing options
- Operating temperature -20°/+80°C

Diameters
100 to 500mm

Carrying capacities
300 to 4500 kg

PTC

POLYURETHANE TYRE ON CAST IRON



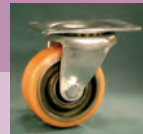
- Rectangular top plate swivel, fixed and swivel with trailing wheel brake
- Zinc plated pressed steel with forks welded to swivel head
- Double ball race
- Operating temperature -20°/+80°C

Diameters
100 to 200mm

Carrying capacities
295 to 600 kg

PTC

POLYURETHANE TYRE ON CAST IRON



- Rectangular top plate swivel, fixed and swivel with trailing wheel brake
- Zinc plated pressed steel
- Single ball race
- Operating temperature -20°/+80°C

Diameters
100 to 200mm

Carrying capacities
270 to 520 kg

BLEP

BLUE ELASTIC POLYURETHANE



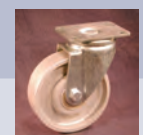
- Rectangular top plate swivel, fixed and swivel with trailing wheel brake plus bolt hole and bolt hole with brake
- Zinc plated pressed steel
- Double ball race
- Operating temperature -20°/+80°C

Diameters
80 to 200mm

Carrying capacities
100 to 250 kg

CI

CAST IRON



- Rectangular top plate swivel, fixed and swivel with leading wheel brake
- Zinc plated pressed steel
- Double ball race
- Operating temperature -40°/+80°C

Diameters
85 to 225mm

Carrying capacities
150 to 1400 kg



additional products

data sheets of these products are available on request in hard copy or electronic form

CI

CAST IRON



- Rectangular top plate swivel, fixed and swivel with trailing wheel brake
- Zinc plated pressed steel with forks welded to swivel head
- Double ball race
- Operating temperature -40°/+80°C

Diameters

100 to 200mm

Carrying capacities

450 to 600 kg

CISF

CAST IRON SINGLE FLANGED



- Steel single flange, cast iron single flange and steel single flange wheels with threaded axle
- Ball bearing and plain bore options
- Double ball race
- Operating temperature -20°/+80°C

Diameters

50 to 300mm

Carrying capacities

150 to 1100 kg

PR

PALLET ROLLER



- Elastic polyurethane and Vulkollan load rollers
- Operating temperature -20°/+80°C

Diameters

82 to 85mm

Carrying capacities

700 to 950 kg

LEV

LEVELLING CASTOR



- Rectangular top plate swivel and bolt hole with female thread
- Powder coat finish levelling castors
- Operating temperature -20°/+70°C

Diameters

50 to 92mm

Carrying capacities

42 to 1200 kg

ALF

ADJUSTABLE LOAD FEET



- Nylon and steel, round and square inserts for fitting with adjustable load feet

To suit tube sizes

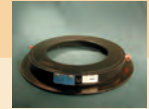
19 to 51mm

Load capacities

150 to 500 kg

SR

SLEWING RING



- Ball turntable for trucks and trailers

Diameters

400 to 1050mm

Carrying capacities

750 to 4500 kg

GR

GRAVITY ROLLERS



- Gravity rollers manufactured from steel, stainless steel and various plastics bearing options plus solid and sprung loaded end fittings

Diameters

25 to 75mm

Carrying capacities

12 to 650 kg

BECI

BLACK ELASTIC RUBBER CAST IRON



- Rectangular top plate swivel, fixed and swivel with leading wheel brake
- Zinc plated pressed steel
- Double ball race
- Operating temperature -20°/+70°C

Diameters

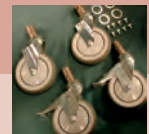
125 to 400mm

Carrying capacities

300 to 1350 kg

HOSP

HOSPITAL BED CASTORS



- Refurbishment castors for hospital beds

Diameters

125mm