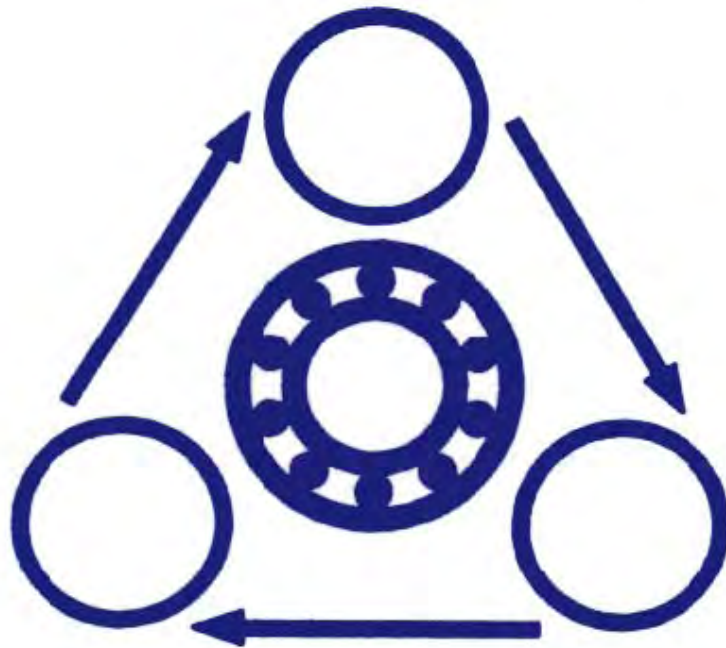


ASHLEY POWER LTD.  
580-586 ASHLEY  
ROAD  
PARKSTONE  
POOLE  
DORSET, BH14 0AQ

**ASHLEY POWER**



**COUPLINGS  
&  
UNIVERSAL JOINT  
CATALOGUE**

Tel: +44 (0) 1202 746031  
Fax: +44 (0) 1202 741108  
Email: sales@ashleypower.co.uk

[www.ashleypower.co.uk](http://www.ashleypower.co.uk)



**ASHLEY POWER**



# COUPLINGS & UNIVERSAL JOINTS





# Couplings & Universal Joints Contents

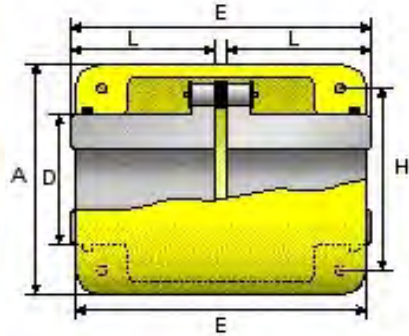
## **Couplings**

Chain Couplings.....	J4
Tyre Couplings.....	J5
Jaw Couplings.....	J6
HRC Couplings.....	J7
Nylon Sleeve Gear Couplings.....	J10

## **Universal Joints**

Single Joint Plain Bearings.....	J11
Single Joint Needle Bearings.....	J12
Single Joint Plain Bearings Long Unbored.....	J13
Double Joint Plain Bearings.....	J14
Double Joint Needle Bearings.....	J15
Double Joint Plain Bearings Long Unbored.....	J16
Protective Gaiters.....	J17

Please note: At Ashley Power we take care to ensure that all information is correct at time of printing however some errors and omissions excepted.



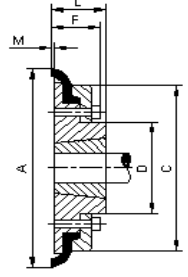
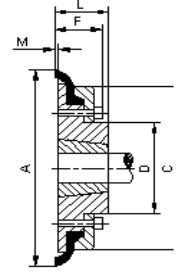
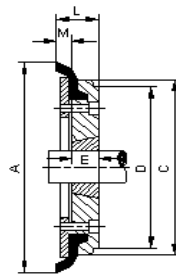
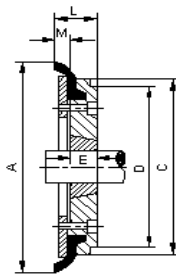
## Chain Couplings

Type	Coupling						Case			
	Bore Size		E	L	D	H	Weight kg	A	B	Weight kg
	Min	Max								
LRC4012	11	22	80	36	35	61	0.8	75	75	0.3
LRC4016	15	30	80	36	50	77	1.4	92	75	0.4
LRC5016	15	40	100	45	60	96	2.6	111	85	0.6
LRC5018	19	45	100	45	70	106	3.5	122	85	0.7
LRC6018	22	55	120	54	85	128	6.2	142	106	1
LRC6022	25	75	120	54	110	152	9.8	167	106	1.2
LRC8018	30	78	150	67	115	170	13.9	186	130	2.3
LRC8022	35	95	150	67	140	202	20.2	220	130	2.4

All dimensions in mm unless specified

If a dimension is critical to your application please contact our sales department for confirmation.

Please note : errors and omissions excepted.



Sizes 40 - 60

Sizes 70 - 160

**Taper Bore  
Tyre Couplings  
Industry Standard  
Rubber Tyre Couplings  
with Taper Bore Hubs**

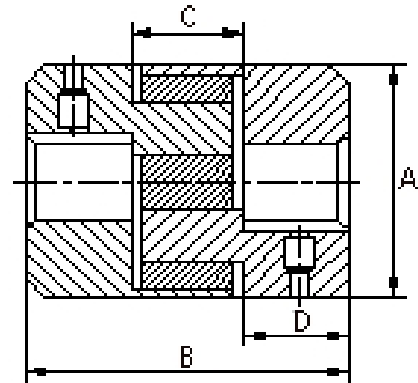
Taper Hub Flanges													
Size	Bush	Max Bore		Types F & H			A	C	D	F	G	M	Wt kg
	No.	Metric	Inch	L	E	J							
F40F	1008	25	1	33	22	29	104	82	-	-	-	11	0.8
F40H	1008	25	1	33	22	29	104	82	-	-	-	11	0.8
F50F	1210	32	1 1/4	38	25	38	133	100	79	-	-	12.5	1.2
F50H	1210	32	1 1/4	38	25	38	133	100	79	-	-	12.5	1.2
F60F	1610	42	1 5/8	42	25	38	165	125	103	-	-	16.5	2
F60H	1610	42	1 5/8	42	25	38	165	125	103	-	-	16.5	2
F70F	2012	50	2	44	32	42	187	144	80	50	13	11.5	3.1
F70H	1610	42	1 5/8	42	25	38	187	144	80	50	13	11.5	3
F80F	2517	60	2 1/2	58	45	48	211	167	95	54	16	12.5	4.9
F80H	2012	50	2	45	32	42	211	167	98	54	16	12.5	4.6
F90F	2517	60	2 1/2	59.5	45	48	235	188	108	60	16	13.5	7
F90H	2517	60	2 1/2	59.5	45	48	235	188	108	60	16	13.5	7
F100F	3020	75	3	65.5	51	55	254	216	120	62	16	13.5	9.9
F100H	2517	60	2 1/2	59.5	45	48	254	216	113	62	16	13.5	9.4
F110F	3020	75	3	63.5	51	55	279	233	134	62	16	12.5	11.7
F110H	3020	75	3	63.5	51	55	279	233	134	62	16	12.5	11.7
F120F	3525	100	4	79.5	65	67	314	264	140	67	16	14.5	16.5
F120H	3020	75	3	65.5	51	55	314	264	140	67	16	14.5	15.9
F140F	3525	100	4	81.5	65	67	359	311	178	73	17	16	22.3
F140H	3525	100	4	81.5	65	67	359	311	178	73	17	16	22.3
F160F	4030	115	4 1/2	92	77	80	402	345	197	78	19	15	32.5
F160H	4030	115	4 1/2	92	77	80	402	345	197	78	19	15	32.5

Tyres			
Size	Power kW / 100 rpm	Max. Speed (rpm)	Wt. kg
F40	0.22	4500	0.1
F45	0.39	4500	0.2
F50	0.56	4500	0.3
F60	1.11	4000	0.5
F70	1.7	3600	0.7
F80	2.65	3100	1
F85	3.2	3000	1
F90	3.82	2880	1.1
F100	5.29	2600	1.1
F110	7.46	2300	1.4
F120	12.4	2050	2.3
F140	19.7	1800	2.6
F160	32.6	1600	3.4

All dimensions in mm unless specified  
 If a dimension is critical to your application please contact our sales department for confirmation.  
 Please note : errors and omissions excepted.



## Parallel Bore Flexible Shaft Couplings JAW Type



Code	Min Bore	Max Bore	A	B*	C	D	Weight kg.	Rubber Insert	Hytrel Insert	Weight kg.
L050-S	6.35	15	27.4	43.7	11.9	15.9	0.22	yes	yes	0.02
L070-S	6.35	19	34.5	50.8	12.7	19.1	0.14	yes	yes	0.03
L075-S	6.35	22.2	44.5	54	12.7	20.6	0.23	yes	yes	0.07
L090-S	6.35	25.4	53.6	54	12.7	20.6	0.36	yes	yes	0.1
L095-S	11.1	28.6	53.6	63.5	12.7	25.4	0.4	yes	yes	0.1
L099-S	12.7	30.2	64.3	73	19.1	27	0.61	yes	yes	0.15
L100-S	12.7	35	64.3	89	19.1	34.9	0.81	yes	yes	0.15
L110-S	15.9	41.3	84.2	108	22.2	42.9	1.71	yes	yes	0.3
L150-S	15.9	47.6	95	114.5	25.4	44.5	2.28	yes	yes	0.63

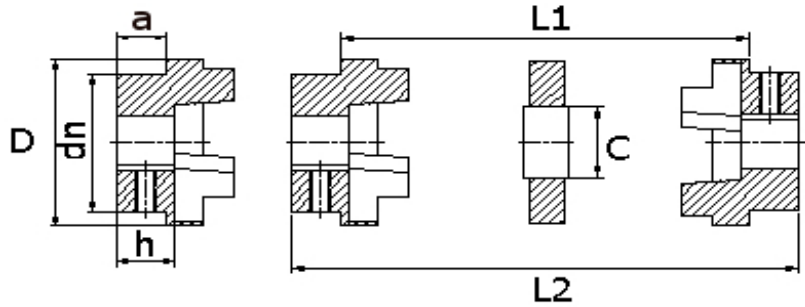
All dimensions in mm unless specified

\*Approximate overall length

Rubber, Hytrel and Urethane inserts available

If a dimension is critical to your application please contact our sales department for confirmation.

Please note : errors and omissions excepted.

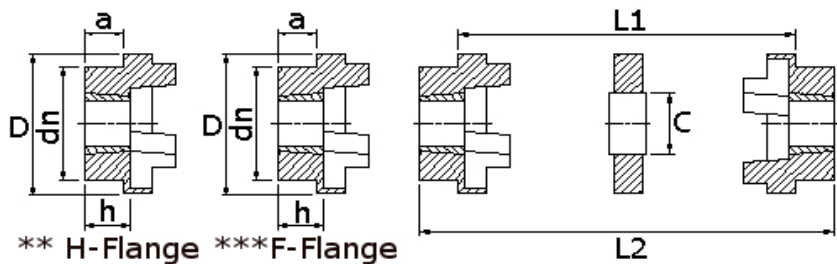


**Parallel Bore  
Flexible Shaft Couplings  
HRC Type**

Size of Coupling	Min Bore	Max Bore	D	dn	a	h	C	L1	L2*
HRC70B	10	32	69	55	21	25	31	25	68
HRC90B	10	38	85	60	20	34	32	31	91
HRC110B	10	48	112	80	19	44	45	45	117
HRC130B	20	55	130	90	18	50	50	53	136
HRC150B	28	65	150	104	24	58	62	60	155
HRC180B	28	75	180	120	35	68	77	73	184
HRC230B	45	95	225	150	40	85	99	86	229
HRC280B	55	130	275	206	51	106	119	106	286

\*Approximate overall length

**Taper Bore  
Flexible Shaft Couplings  
HRC Type**



\*\* H-Flange \*\*\*F-Flange

Size of Coupling	Bush Ref.	Bore Min	Bore Max	D	dn	a	h	C	L1	L2
HRC70	1008	9	25	69	55	21	24	31	25	65
HRC90	1108	9	28	85	60	20	24	32	31	70
HRC110	1610	12	42	112	80	19	27	45	45	82
HRC130	1610	12	42	130	90	18	27	50	53	89
HRC150	2012	14	50	150	104	24	34	62	60	107
HRC180	2517	16	65	180	120	35	47	77	73	142
HRC230	3020	25	75	225	150	40	53	99	86	165
HRC280	3525	28	90	275	206	51	67	119	106	208

\*Approximate overall length

\*\*H = Flange for external bush assembly

\*\*\*F = Flange for internal bush assembly

All dimensions in mm unless specified

If a dimension is critical to your application please contact our sales department for confirmation.

Please note : errors and omissions excepted.



## Flexible Shaft Couplings

### Technical Data

Technical Data								
Size of Coupling	Bush Size	Torque		Max. Speed*	Moment of Inertia**		Weight of Coupling**	
Type	No.	Nominal Nm	Max. Nm	rpm	Bush Type kgm <sup>2</sup>	Std. Type kgm <sup>2</sup>	Bush Type k.g	Std. Type k.g
HRC70	1008	33	73	7700	0.00085	0.00078	1	1.1
HRC90	1108	84	85	6300	0.00115	0.00108	1.7	1.7
HRC110	1610	168	370	5000	0.004	0.00344	5	4.2
HRC130	1610	331	728	4100	0.0078	0.0085	5.5	6.3
HRC150	2012	630	1490	3600	0.0181	0.02112	7.1	9.5
HRC180	2517	998	2300	3000	0.0434	0.0482	16.6	15
HRC230	3020	2100	4800	2600	0.12068	0.14052	26	28
HRC280	3525	3308	7000	2200	0.44653	0.5479	50	63

\*At speeds exceeding allowable maximum speed, please consult our technical department.

\*\* Including bush with a medium bore.

Permissible Misalignment Tolerances in mm									
Size of Coupling	7	9	11	13	15	18	23	28	
Axial Misalignment	+0.2	+0.5	+0.6	+0.8	+0.9	+1.1	+1.3	+1.7	
Radial Misalignment	0.3	0.3	0.3	0.4	0.4	0.4	0.5	0.5	
Angular Misalignment	0.5	0.5	1	1	1.5	1.5	2	2.5	

### Coupling Selection Procedure

1. Select service factor (Table 1).
2. Nominal power multiplied by service factor equals temporary designed power K.
3. Designed power K should then be multiplied by factor L (Table 2) and S (Table 3). K x L x S gives the design power which is used for coupling selection in Table 4.
4. Check from dimensional tables that chosen coupling has room to be mounted.

Service Factors (Table 1)				
Type of Load	Driven	Driver		
		Electric motors, Light Turbines	Internal Combustion Engine >=4 cylinders	Internal Combustion Engine 1-3 cylinders
Uniform <i>No Vibration</i>	Agitators, conveyors, centrifugal pumps and compressors, centrifugal fans, generators and machine tools	1	1.4	1.8
Moderate <i>No Vibration</i>	Agitators, conveyors, hoisting equipment, bucket elevators, textile machines, mixers, printing machinery, sawmill machinery, rotary pumps	1.4	2	2.4
Substantial <i>Vibrations</i>	Hoisting equipment, calendars, crushers, dredgers, revolving furnaces, print presses, cutting presses, rotary compressors	2	2.4	2.8
Heavy <i>Shocks &amp; Vibration</i>	Crushers, extruders, rubber mixers, reciprocating pumps and conveyors, reciprocating compressors, vibrating screens	2.4	2.8	3.2



## Flexible Shaft Couplings

### Technical Data

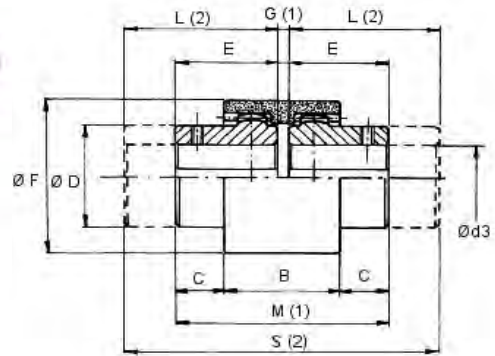
Operating Hours Factor (Table 2)				
>	-	2	8	16
<=	2	8	16	-
L	0.9	1	1.1	1.2

Starting Frequency Factor (Table 3)				
>	-	1	30	60
<=	1	30	60	-
S	1	1.2	1.3	1.5

rpm	Size of Coupling							
	KW							
	70	90	110	130	150	180	230	280
100	0.35	0.88	1.75	3.44	6.59	10.43	22	34.65
200	0.69	1.75	3.52	6.88	13.18	20.86	44.02	69.3
400	1.39	3.51	7.04	13.77	26.37	41.72	88.04	138.6
600	2.08	5.25	10.6	20.65	39.55	62.58	132.06	207.9
800	2.78	7	14.1	27.53	52.73	83.44	176.08	277.2
1000	3.47	8.75	17.6	34.42	65.92	104.3	220.1	346.5
1200	4.16	10.5	21.1	41.3	79.1	125.2	264.12	415.8
1400	4.86	12.25	24.6	48.18	92.28	146.02	308.13	485.1
1600	5.55	14	27.1	55.07	105.47	166.88	352.15	554.1
1800	6.25	15.76	31.7	61.95	118.65	187.74	396.17	623.7
2000	6.94	17.51	35.2	68.83	131.83	208.6	440.19	693
2200	7.64	19.26	38.7	75.72	145.01	229.46	484.21	762.3
2400	8.33	21	42.2	82.6	158.2	250.32	528.23	-
2600	9.02	22.76	45.7	89.48	171.38	271.18	572.25	-
2800	9.72	24.51	49.3	96.37	184.57	292.04	-	-
3000	10.41	26.26	52.8	103.25	197.75	312.9	-	-
3500	12.15	30.64	61.6	120.46	230.71	-	-	-
4000	13.88	35.01	70.4	136.67	-	-	-	-
4500	15.62	39.39	79.1	-	-	-	-	-
5000	17.35	43.76	87.9	-	-	-	-	-
5500	19.09	48.14	-	-	-	-	-	-
6000	20.82	52.52	-	-	-	-	-	-
6500	25.56	-	-	-	-	-	-	-
7000	24.3	-	-	-	-	-	-	-
7500	26.03	-	-	-	-	-	-	-

Dynamic Balance Required

If a dimension is critical to your application please contact our sales department for confirmation.  
Please note : errors and omissions excepted.



## Nylon Sleeve Gear Couplings

### Industry Standard

Coupling Type	Nominal Bore <sup>(3)</sup>	Max. Bore	Standard Hubs								Long Hubs		Number of Teeth	Tooth O/D mm	Tooth Length mm
			B	C	Ø D	E	Ø F	G <sup>(1)</sup>	M <sup>(1)</sup>	L <sup>(2)</sup>	S <sup>(2)</sup>				
GF14	6	14	38	6.5	25	23.5	41	4	51	30	64	21	33.8	8	
GF19	8	19	38	8.5	32	25.5	48	4	55	40	84	26	41.3	8	
GF24	10	24	42	7.5	36	26.5	52	4	57	50	104	28	44.5	8	
GF28	10	28	48	19	45	41	68	4	86	60	124	35	54.5	10	
GF32	12	32	48	18	50	40	75	4	84	60	124	38	58.8	10	
GF38	14	38	50	17	58	40	85	4	84	80	164	44	67.6	12	
GF42	20	42	50	19	63	42	95	4	88	110	224	47	71.6	12	
GF48	20	48	50	27	68	50	100	4	104	110	224	50	76	12	
GF55	25	55	65	29.5	82	60	120	4	124	110	224	46	94.7	15	
GF65	25	65	72	36	95	70	140	4	144	140	284	56	115	18	

All dimensions in mm unless specified

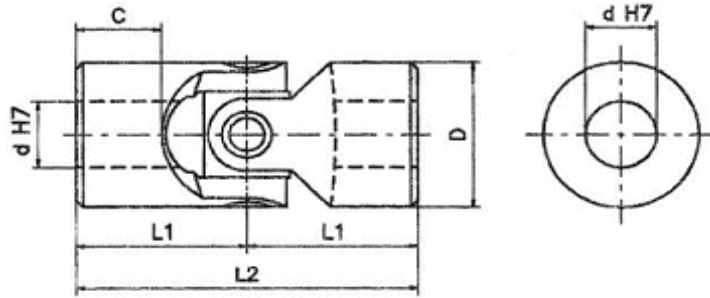
(1) Assembled length.

(2) Coupling hub length to fully fit standard shafts of UNEL-MEC range of motors.

(3) Finished bores to H7 tolerance and keyways on request.

If a dimension is critical to your application please contact our sales department for confirmation.

Please note : errors and omissions excepted.

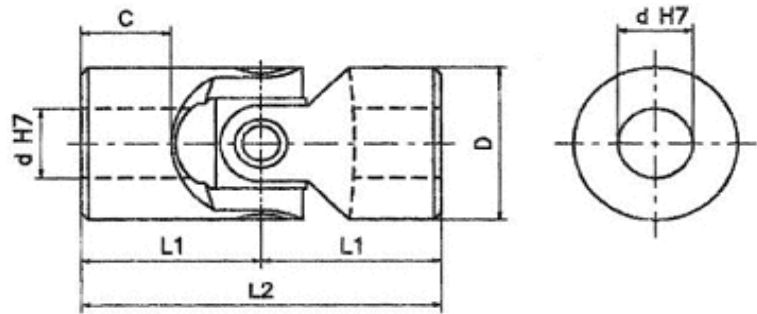


**Single Joint  
Plain Bearings  
Type UJSP in Steel**

UJSP Properties		Further bore types as below available on request		
Maximum working angle	45 degrees			
Maximum speed	1000 rpm			
Maximum power	6kW			
Maximum torque	600 Nm			
Higher power and torques are available using larger diameter or needle roller bearing joints : please enquire				
NB : It is recommended that all plain bearing joints should be used with a protective gaiter to assist lubrication and help arrest the ingress of dirt.				

Stock No	Bore d H7	Diameter D	Overall length L2	Pivot centre L1	Hub length C	Weight KG	Gaiter type
UJSP16X6	6	16	34	17	8	0.05	UJG01M16
UJSP16X8	8	16	40	20	11	0.05	UJG01M16
UJSP22X10	10	22	48	24	12	0.1	UJG03M22
UJSP25X12	12	25	56	28	13	0.16	UJG04M25
UJSP28X14	14	28	60	30	14	0.2	UJG05M28
UJSP32X16	16	32	68	34	16	0.3	UJG1M32
UJSP36X18	18	36	74	37	17	0.45	UJG2M36
UJSP42X20	20	42	82	41	18	0.6	UJG3M42
UJSP45X22	22	45	95	47.5	22	0.95	UJG4M45
UJSP50X25	25	50	108	54	26	1.2	UJG5M50

For further sizes please enquire  
All dimensions in mm unless specified  
If a dimension is critical to your application please contact our sales department for confirmation.  
Please note : errors and omissions excepted.

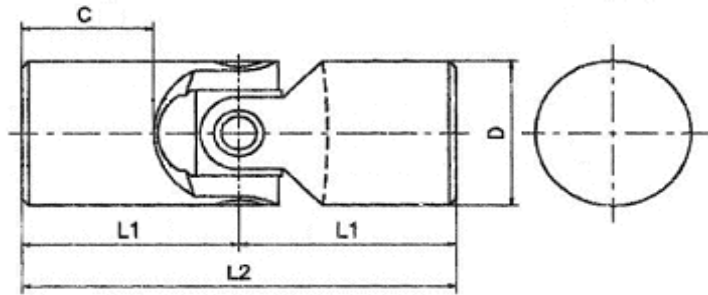


**Single Joint  
Needle Roller Bearings  
Type UJSN in Steel**

UJSN Properties		Further bore types as below available on request		
Maximum working angle	45 degrees			
Maximum speed	4000 rpm			
Maximum power	40kW			
Maximum torque	200 Nm			
Higher power and torques are available using larger diameter or needle roller bearing joints : please enquire				
NB: Protective gaiters are unnecessary for most applications				

Stock No	Bore d H7	Diameter D	Overall length L2	Pivot centre L1	Hub length C	Weight KG
UJSN22X10	10	22	48	24	12	0.1
UJSN25X12	12	25	56	28	13	0.16
UJSN28X14	14	28	60	30	14	0.2
UJSN32X16	16	32	68	34	16	0.3
UJSN36X18	18	36	74	37	17	0.45
UJSN42X20	20	42	82	41	18	0.6
UJSN45X22	22	45	95	47.5	22	0.95
UJSN50X25	25	50	108	54	26	1.2

For further sizes please enquire  
 All dimensions in mm unless specified  
 If a dimension is critical to your application please contact our sales department for confirmation.  
 Please note : errors and omissions excepted.

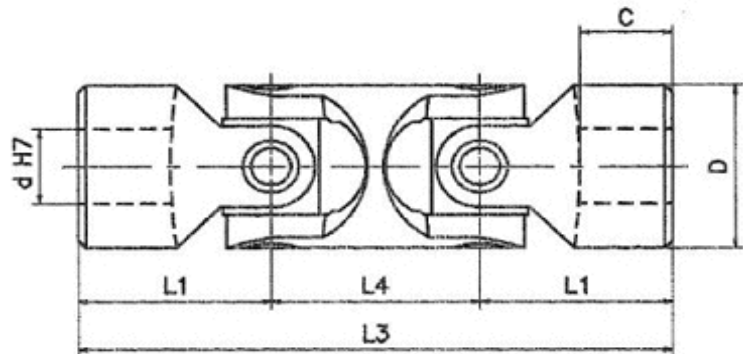


**Single Joint  
Plain Bearings  
UNBORED LONG  
Type UJSPL in Steel**

UJSPL Properties		Further bore types as below available on request	
Maximum working angle	45 degrees		
Maximum speed	1000 rpm		
Maximum power	6kW		
Maximum torque	600 Nm		
Higher power and torques are available using larger diameter or needle roller bearing joints : please enquire			
NB : It is recommended that all plain bearing joints should be used with a protective gaiter to assist lubrication and help arrest the ingress of dirt.			

Stock No	Bore	Diameter D	Overall length L2	Pivot centre L1	Hub length C	Weight KG	Gaiter type
UJSPL16XSOL	SOLID	16	56	28	19	-	UJG01M16
UJSPL22XSOL	SOLID	22	76	38	26	-	UJG03M22
UJSPL25XSOL	SOLID	25	86	43	28	-	UJG04M25
UJSPL28XSOL	SOLID	28	90	45	29	-	UJG05M28
UJSPL32XSOL	SOLID	32	95	47.5	29.5	-	UJG1M32
UJSPL36XSOL	SOLID	36	108	54	34	-	UJG2M36
UJSPL42XSOL	SOLID	42	127	63.5	40.5	-	UJG3M42
UJSPL45XSOL	SOLID	45	127	63.5	38	-	UJG4M45
UJSPL50XSOL	SOLID	50	140	70	42	-	UJG5M50
UJSPL58XSOL	SOLID	58	166	83	51	-	UJG5M58

For further sizes please enquire  
All dimensions in mm unless specified  
If a dimension is critical to your application please contact our sales department for confirmation.  
Please note : errors and omissions excepted.



## Double Joint Plain Bearings Type UJDP in Steel

UJDP Properties		Further bore types as below available on request
Maximum working angle	90 degrees	
Maximum speed	1000 rpm	
Maximum power	6kW	
Maximum torque	600 Nm	
Higher power and torques are available using larger diameter or needle roller bearing joints : please enquire		
NB : It is recommended that all plain bearing joints should be used with a protective gaiter to assist lubrication and help arrest the ingress of dirt.		

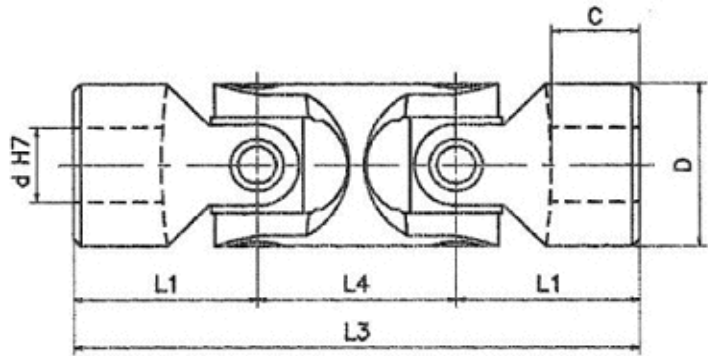
Stock No	Bore d H7	Diameter D	Overall length L3	Pivot to face centre L1	Pivot to pivot centre L4	Hub length C	Weight KG	Gaiter type
UJDP16X6	6	16	56	17	22	8	0.08	UJG01M16
UJDP16X8	8	16	62	20	22	11	0.08	UJG01M16
UJDP22X10	10	22	74	24	26	12	0.15	UJG03M22
UJDP25X12	12	25	86	28	30	13	0.25	UJG04M25
UJDP28X14	14	28	96	30	36	14	0.4	UJG05M28
UJDP32X16	16	32	104	34	36	16	0.45	UJG1M32
UJDP36X18	18	36	114	37	40	17	0.7	UJG2M36
UJDP42X20	20	42	128	41	46	18	1	UJG3M42
UJDP45X22	22	45	145	47.5	50	22	1.55	UJG4M45
UJDP50X25	25	50	163	54	55	26	2	UJG5M50

For further sizes please enquire

All dimensions in mm unless specified

If a dimension is critical to your application please contact our sales department for confirmation.

Please note : errors and omissions excepted.

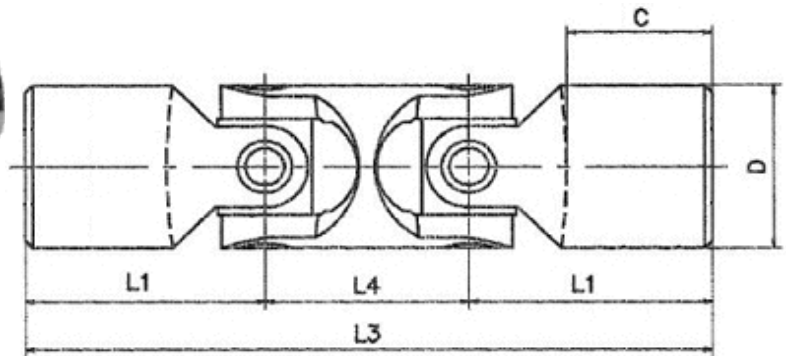
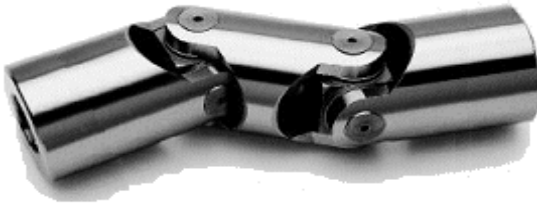


**Double Joint  
Needle Roller Bearings  
Type UJDN in Steel**

UJDN Properties		Further bore types as below available on request	
Maximum working angle	90 degrees		
Maximum speed	4000 rpm		
Maximum power	40kW		
Maximum torque	200 Nm		
Higher power and torques are available using larger diameter or needle roller bearing joints : please enquire			
NB: Protective gaiters are unnecessary for most applications			

Stock No	Bore d H7	Diameter D	Overall length L3	Pivot to face centre L1	Pivot to pivot centre L4	Hub length C	Weight KG
UJDN22X10	10	22	74	24	26	12	0.15
UJDN25X12	12	25	86	28	30	13	0.25
UJDN28X14	14	28	96	30	36	14	0.4
UJDN32X16	16	32	104	34	36	16	0.45
UJDN36X18	18	36	114	37	40	17	0.7
UJDN42X20	20	42	128	41	46	18	1
UJDN45X22	22	45	145	47.5	50	22	1.55
UJDN50X25	25	50	163	54	55	26	2

For further sizes please enquire  
 All dimensions in mm unless specified  
 If a dimension is critical to your application please contact our sales department for confirmation.  
 Please note : errors and omissions excepted.

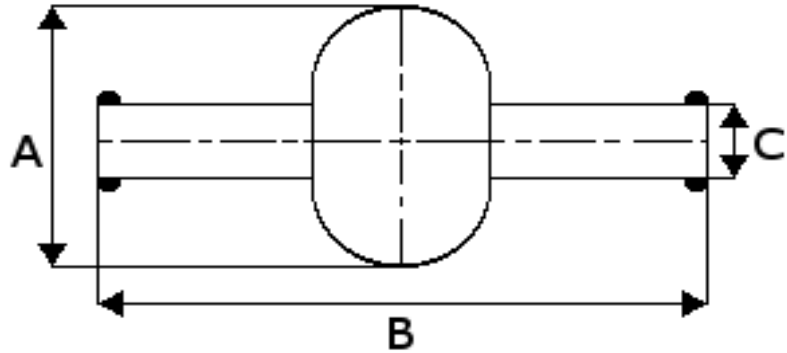


**Double Joint  
Plain Bearings  
UNBORED LONG  
Type UJDPL in Steel**

UJDPL Properties		Further bore types as below available on request	
Maximum working angle	90 degrees		
Maximum speed	1000 rpm		
Maximum power	6kW		
Maximum torque	600 Nm		
Higher power and torques are available using larger diameter or needle roller bearing joints : please enquire			
NB : It is recommended that all plain bearing joints should be used with a protective gaiter to assist lubrication and help arrest the ingress of dirt.			

Stock No	Bore	Diameter D	Overall length L2	Pivot centre L1	Pivot to pivot centre L4	Hub length C	Weight KG	Gaiter type
UJDPL16XSOL	SOLID	16	67	22.5	22	13.5	-	UJG01M16
UJDPL22XSOL	SOLID	22	115	44.5	26	32.5	-	UJG03M22
UJDPL25XSOL	SOLID	25	123	46.5	30	31.5	-	UJG04M25
UJDPL28XSOL	SOLID	28	130	47	36	31	-	UJG05M28
UJDPL32XSOL	SOLID	32	143	53	37	35	-	UJG1M32
UJDPL36XSOL	SOLID	36	155	57.5	40	37.5	-	UJG2M36
UJDPL42XSOL	SOLID	42	162	57.5	47	34.5	-	UJG3M42
UJDPL45XSOL	SOLID	45	173	61.5	50	36	-	UJG4M45
UJDPL50XSOL	SOLID	50	220	82.5	55	54.5	-	UJG5M50
UJDPL58XSOL	SOLID	58	245	88.5	68	55	-	UJG5M58

For further sizes please enquire  
 All dimensions in mm unless specified  
 If a dimension is critical to your application please contact our sales department for confirmation.  
 Please note : errors and omissions excepted.



## Protective Gaiters

### Type UJG in Polychloroprene Rubber

Stock No	Diameter A	Length B	Bore C	Joint Outside Diameter
UJG01M16	28	34	15	16
UJG02M18	32	40	16.5	18
UJG03M22	40	45	20.5	22
UJG04M25	48	50	24.5	25
UJG05M28	52	56	27.5	28
UJG1M32	56	65	30.5	32
UJG2M36	66	72	35.5	36
UJG3M42	75	82	40	42
UJG4M45	84	95	45	45
UJG5M50	92	108	50	50

For further sizes please enquire

All dimensions in mm unless specified

If a dimension is critical to your application please contact our sales department for confirmation.

Please note : errors and omissions excepted.



**ASHLEY POWER**



# Notes